

Dardenne Crossing  
O'Fallon, Missouri

1 Mile Radius

3 Mile Radius

5 Mile Radius

10 Minute Drive

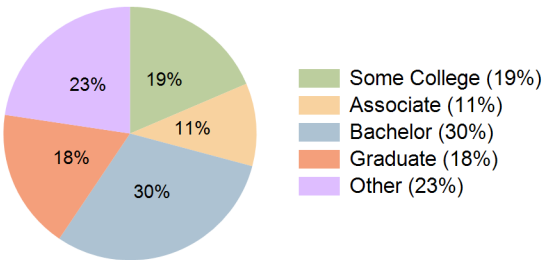
Current Year Demographics

Current Population	10,926	83,228	166,614	103,405
Total Daytime Pop	8,217	66,431	146,454	89,484
Daytime Workers	3,566	30,972	72,478	45,336
Average Household Income	\$149,044	\$149,079	\$136,009	\$144,692
Median Household Income	\$124,657	\$123,170	\$108,876	\$117,162
Total Households	3,970	30,218	63,448	38,792
Median Home Value	\$355,503	\$361,217	\$348,753	\$360,786
Bachelors Degree	32.7%	31.5%	28.3%	30.3%
Graduate Degree	20.0%	18.2%	17.0%	17.9%
Consumer Spending Index	126	126	116	123

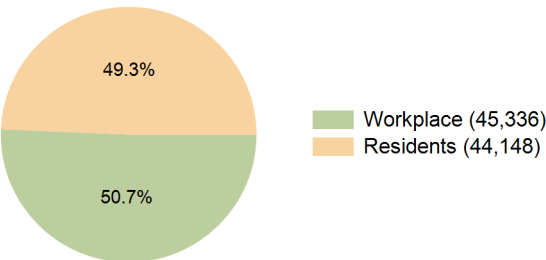
2030 Demographic Projections

Projected Population	11,084	85,792	172,904	107,263
Projected 5 Year Annual Growth Rate (Pop)	0.3%	0.6%	0.7%	0.7%
Projected Households	4,080	31,584	66,695	40,803
Projected 5 Year Annual Growth Rate (HH)	0.6%	0.9%	1.0%	1.0%

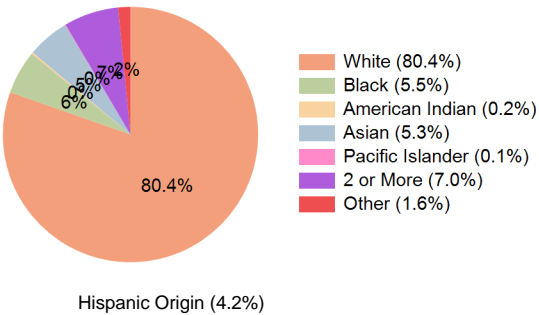
Education (10 Minute Drive)



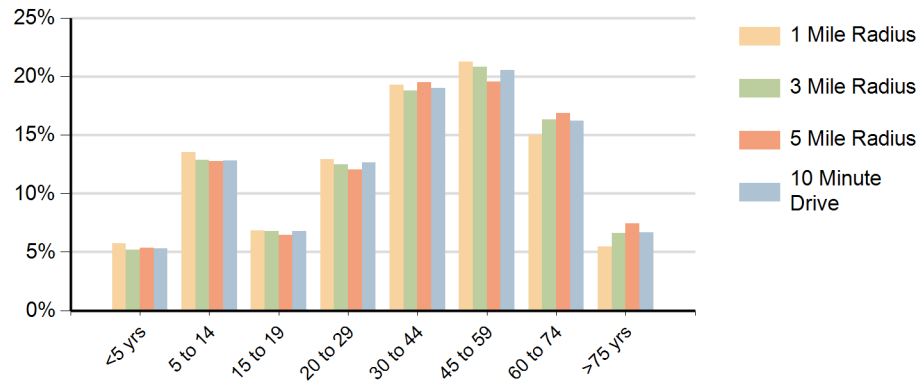
Daytime Population (10 Minute Drive)



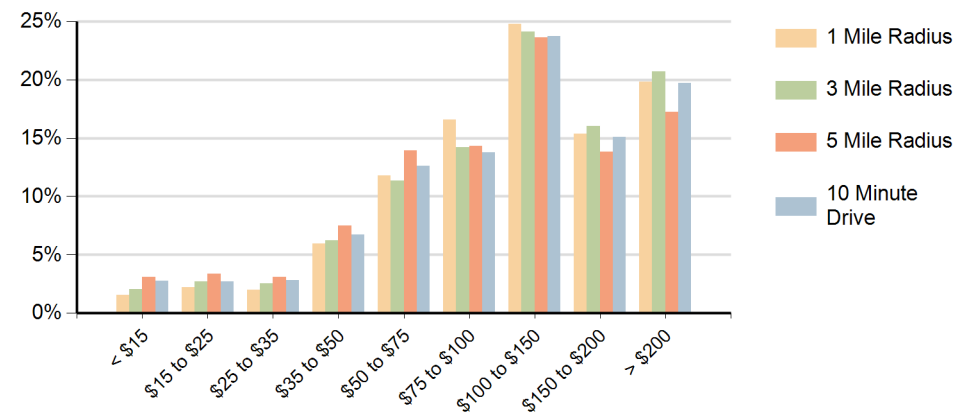
Race (10 Minute Drive)



### Population by Age Range



### Households by Income Range (\$000)



Dardenne Crossing O'Fallon, Missouri		1 Mile Radius	3 Mile Radius	5 Mile Radius	10 Minute Drive
Population	Current Estimated Population	10,926	83,228	166,614	103,405
	2020 Census Population	10,925	80,142	158,254	97,050
	2010 Census Population	11,007	76,674	145,514	91,684
	Historical Annual Growth 2010 to 2020	-0.1%	0.4%	0.8%	0.6%
	Estimated Annual Growth 2020 to 2025	0.0%	0.7%	1.0%	1.2%
	Projected Annual Growth 2025 to 2030	0.3%	0.6%	0.7%	0.7%
Households	Current Estimated Households	3,970	30,218	63,448	38,792
	2020 Census Households	3,867	28,300	59,001	35,455
	2010 Census Households	3,739	25,801	51,948	31,809
	Historical Annual Growth 2010 to 2020	0.3%	0.9%	1.3%	1.1%
	Estimated Annual Growth 2020 to 2025	0.5%	1.3%	1.4%	1.7%
	Projected Annual Growth 2025 to 2030	0.6%	0.9%	1.0%	1.0%
Race	Population per Household	2.7	2.7	2.6	2.7
	White	78.2%	80.7%	81.4%	80.4%
	Black or African American	4.2%	5.1%	5.4%	5.5%
	American Indian	0.1%	0.2%	0.2%	0.2%
	Asian	9.8%	5.6%	4.3%	5.3%
	Pacific Islander	0.0%	0.1%	0.1%	0.1%
	2 or More Races	6.6%	6.9%	7.0%	7.0%
	Other Races	1.2%	1.5%	1.6%	1.6%
Hispanic Origin		3.4%	4.1%	4.3%	4.2%