

Brentwood Plaza
Brentwood, Missouri

1 Mile Radius

3 Mile Radius

5 Mile Radius

10 Minute Drive

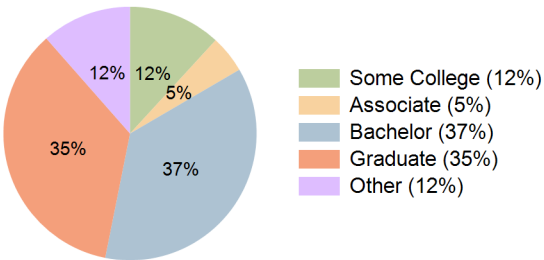
Current Year Demographics

Current Population	11,781	107,943	302,151	104,070
Total Daytime Pop	15,036	144,217	346,831	140,720
Daytime Workers	10,418	97,793	213,694	95,766
Average Household Income	\$135,533	\$149,547	\$130,446	\$159,072
Median Household Income	\$99,122	\$101,480	\$86,921	\$107,246
Total Households	5,215	48,143	138,077	46,170
Median Home Value	\$334,725	\$388,040	\$341,148	\$434,054
Bachelors Degree	38.8%	35.4%	32.6%	36.5%
Graduate Degree	31.3%	33.8%	28.4%	35.4%
Consumer Spending Index	119	130	115	138

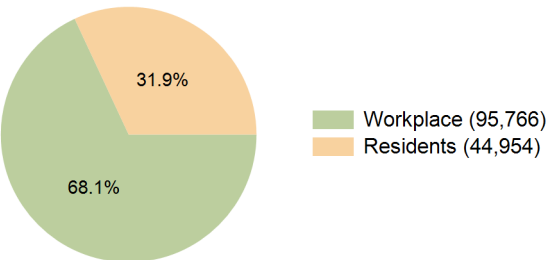
2029 Demographic Projections

Projected Population	11,667	107,204	298,788	104,257
Projected 5 Year Annual Growth Rate (Pop)	-0.2%	-0.1%	-0.2%	0.0%
Projected Households	5,207	48,453	138,546	46,811
Projected 5 Year Annual Growth Rate (HH)	0.0%	0.1%	0.1%	0.3%

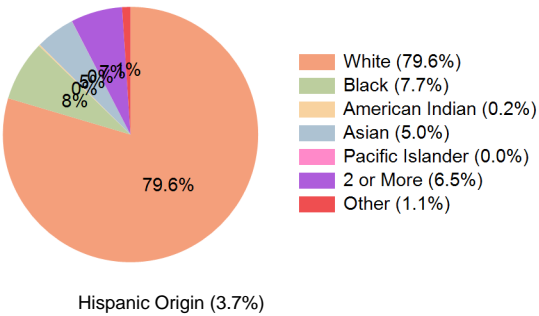
Education (10 Minute Drive)



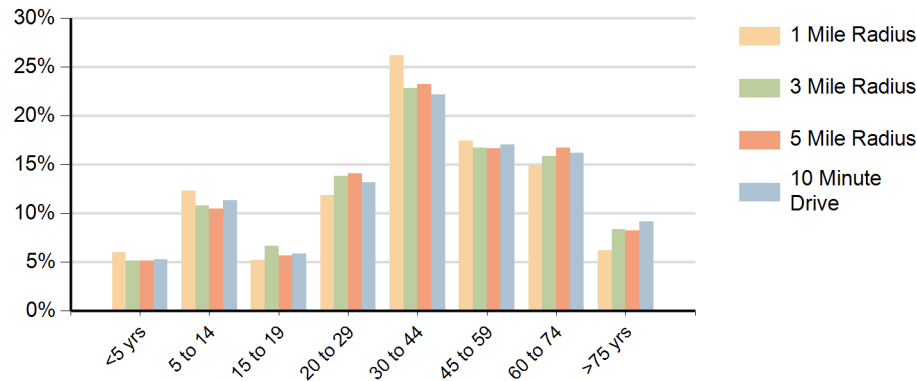
Daytime Population (10 Minute Drive)



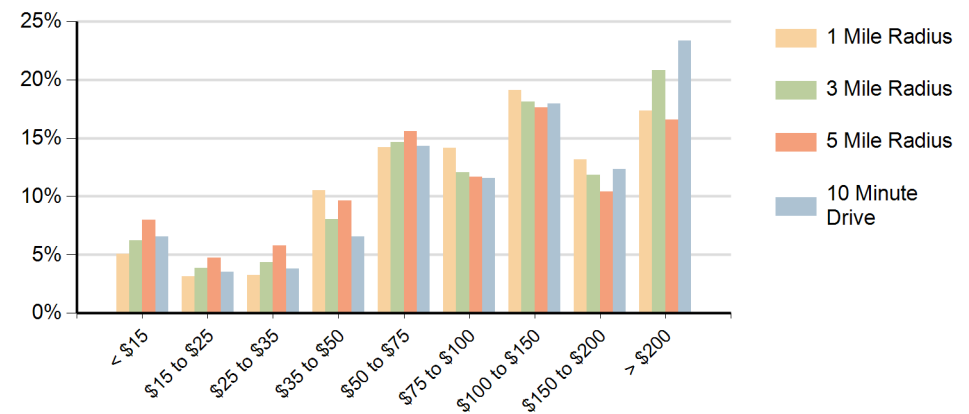
Race (10 Minute Drive)



Population by Age Range



Households by Income Range (\$000)



Brentwood Plaza Brentwood, Missouri		1 Mile Radius	3 Mile Radius	5 Mile Radius	10 Minute Drive
Population	Current Estimated Population	11,781	107,943	302,151	104,070
	2020 Census Population	11,855	108,777	305,075	104,765
	2010 Census Population	11,608	105,132	298,360	100,153
	Historical Annual Growth 2010 to 2020	0.2%	0.3%	0.2%	0.5%
	Estimated Annual Growth 2020 to 2024	-0.2%	-0.2%	-0.2%	-0.2%
	Projected Annual Growth 2024 to 2029	-0.2%	-0.1%	-0.2%	0.0%
Households	Current Estimated Households	5,215	48,143	138,077	46,170
	2020 Census Households	5,226	48,121	138,267	46,101
	2010 Census Households	5,166	46,310	134,265	44,402
	Historical Annual Growth 2010 to 2020	0.1%	0.4%	0.3%	0.4%
	Estimated Annual Growth 2020 to 2024	-0.1%	0.0%	0.0%	0.0%
	Projected Annual Growth 2024 to 2029	0.0%	0.1%	0.1%	0.3%
Race	Population per Household	2.3	2.1	2.1	2.2
	White	74.8%	80.5%	73.6%	79.6%
	Black or African American	11.9%	6.8%	12.9%	7.7%
	American Indian	0.3%	0.2%	0.2%	0.2%
	Asian	4.3%	4.8%	5.2%	5.0%
	Pacific Islander	0.0%	0.0%	0.0%	0.0%
	2 or More Races	7.6%	6.6%	6.5%	6.5%
	Other Races	1.2%	1.1%	1.5%	1.1%
Hispanic Origin		3.8%	3.8%	4.1%	3.7%