

Oakshade Town Center
Davis, California

1 Mile Radius

3 Mile Radius

5 Mile Radius

10 Minute Drive

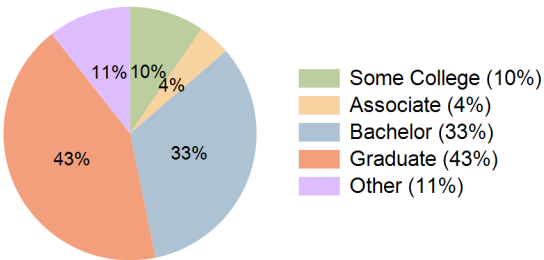
Current Year Demographics

Current Population	13,961	72,976	81,613	72,825
Total Daytime Pop	17,224	87,023	94,008	86,269
Daytime Workers	9,973	44,949	47,694	44,624
Average Household Income	\$112,432	\$138,060	\$138,907	\$132,458
Median Household Income	\$70,839	\$87,226	\$88,425	\$82,347
Total Households	5,212	25,087	28,400	24,793
Median Home Value	\$688,384	\$809,865	\$812,458	\$797,789
Bachelors Degree	30.0%	32.4%	32.8%	33.0%
Graduate Degree	36.9%	43.6%	44.0%	42.6%
Consumer Spending Index	101	122	123	117

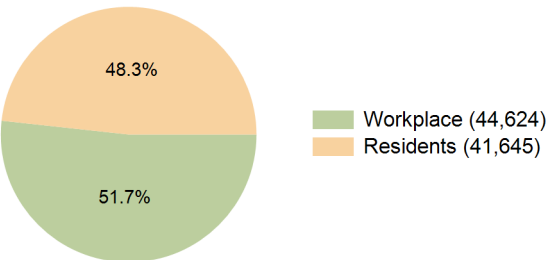
2029 Demographic Projections

Projected Population	14,348	74,183	82,823	74,030
Projected 5 Year Annual Growth Rate (Pop)	0.6%	0.3%	0.3%	0.3%
Projected Households	5,385	25,703	29,037	25,401
Projected 5 Year Annual Growth Rate (HH)	0.7%	0.5%	0.4%	0.5%

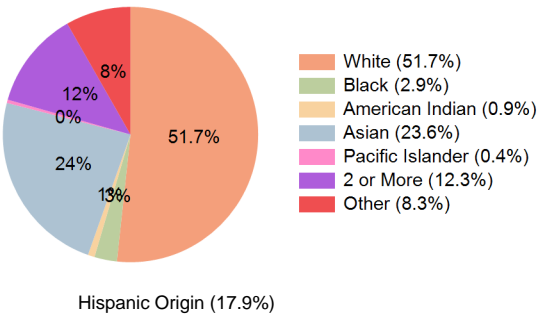
Education (10 Minute Drive)



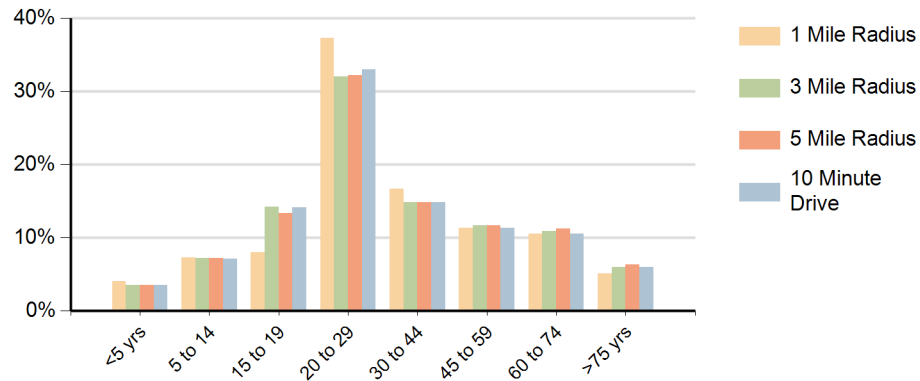
Daytime Population (10 Minute Drive)



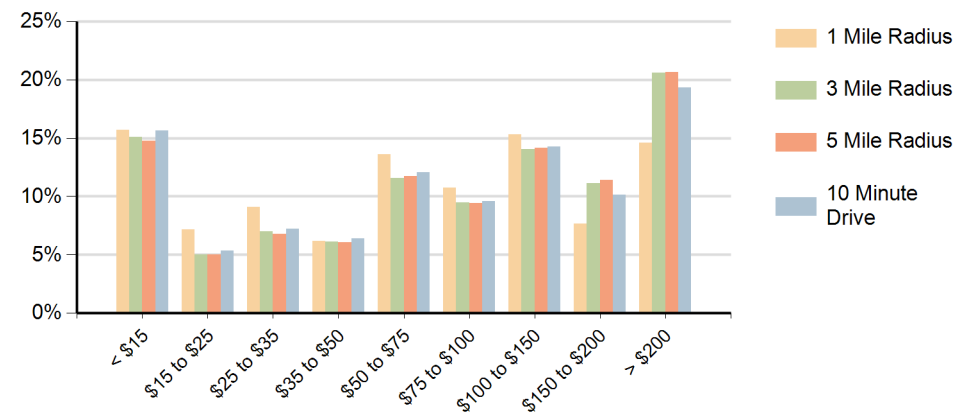
Race (10 Minute Drive)



Population by Age Range



Households by Income Range (\$000)



Oakshade Town Center Davis, California		1 Mile Radius	3 Mile Radius	5 Mile Radius	10 Minute Drive
Population	Current Estimated Population	13,961	72,976	81,613	72,825
	2020 Census Population	14,077	69,689	78,179	69,297
	2010 Census Population	14,175	66,373	74,123	65,628
	Historical Annual Growth 2010 to 2020	-0.1%	0.5%	0.5%	0.6%
	Estimated Annual Growth 2020 to 2024	-0.2%	1.1%	1.0%	1.2%
	Projected Annual Growth 2024 to 2029	0.6%	0.3%	0.3%	0.3%
Households	Current Estimated Households	5,212	25,087	28,400	24,793
	2020 Census Households	5,266	24,823	28,124	24,528
	2010 Census Households	5,163	23,868	27,014	23,528
	Historical Annual Growth 2010 to 2020	0.2%	0.4%	0.4%	0.4%
	Estimated Annual Growth 2020 to 2024	-0.2%	0.3%	0.2%	0.3%
	Projected Annual Growth 2024 to 2029	0.7%	0.5%	0.4%	0.5%
Race	Population per Household	2.5	2.5	2.5	2.5
	White	45.5%	51.6%	52.0%	51.7%
	Black or African American	2.6%	2.9%	2.8%	2.9%
	American Indian	1.0%	0.8%	0.8%	0.9%
	Asian	26.9%	23.7%	23.5%	23.6%
	Pacific Islander	0.2%	0.4%	0.4%	0.4%
	2 or More Races	13.5%	12.5%	12.5%	12.3%
	Other Races	10.2%	8.1%	8.1%	8.3%
Hispanic Origin		21.3%	17.7%	17.7%	17.9%