

| Tech Ridge Center<br>Austin, Texas | 1 Mile Radius | 3 Mile Radius | 5 Mile Radius | 10 Minute Drive |
|------------------------------------|---------------|---------------|---------------|-----------------|
|------------------------------------|---------------|---------------|---------------|-----------------|

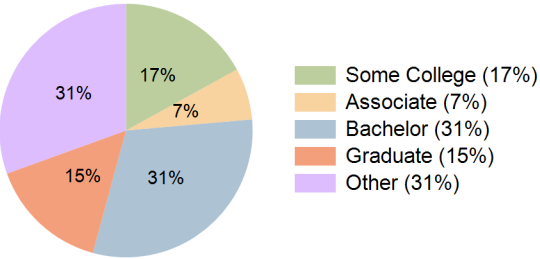
Current Year Demographics

|                          |           |           |           |           |
|--------------------------|-----------|-----------|-----------|-----------|
| Current Population       | 8,230     | 139,656   | 298,586   | 212,866   |
| Total Daytime Pop        | 13,283    | 127,799   | 333,831   | 235,665   |
| Daytime Workers          | 10,410    | 74,639    | 215,784   | 151,180   |
| Average Household Income | \$100,613 | \$103,287 | \$109,358 | \$99,442  |
| Median Household Income  | \$76,393  | \$77,096  | \$79,055  | \$73,620  |
| Total Households         | 3,914     | 58,941    | 126,883   | 88,005    |
| Median Home Value        | \$438,564 | \$420,383 | \$450,519 | \$432,016 |
| Bachelors Degree         | 34.0%     | 31.4%     | 31.2%     | 30.6%     |
| Graduate Degree          | 20.6%     | 17.2%     | 17.9%     | 15.3%     |
| Consumer Spending Index  | 91        | 93        | 98        | 90        |

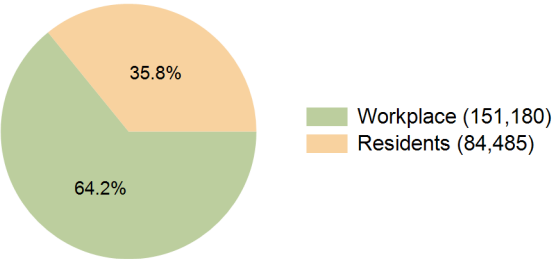
2029 Demographic Projections

|   |       |         |         |         |
|---|-------|---------|---------|---------|
| Projected Population                      | 8,516 | 149,930 | 316,996 | 220,626 |
| Projected 5 Year Annual Growth Rate (Pop) | 0.7%  | 1.4%    | 1.2%    | 0.7%    |
| Projected Households                      | 4,156 | 65,203  | 138,647 | 94,248  |
| Projected 5 Year Annual Growth Rate (HH)  | 1.2%  | 2.0%    | 1.8%    | 1.4%    |

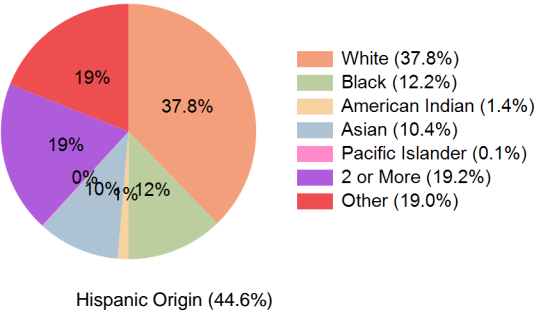
Education (10 Minute Drive)



Daytime Population (10 Minute Drive)

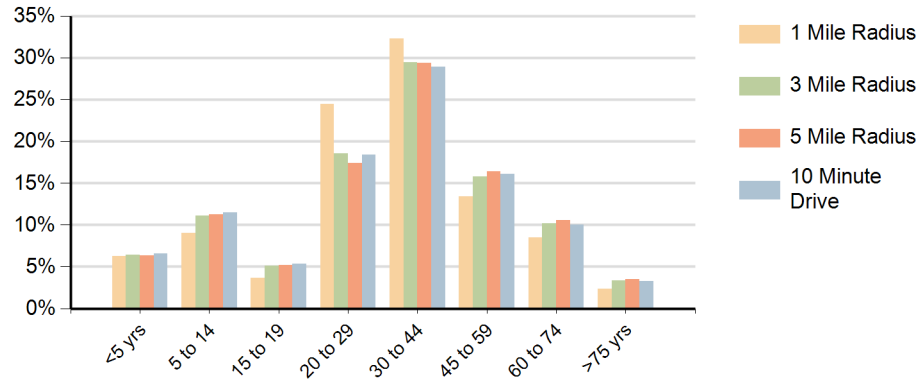


Race (10 Minute Drive)

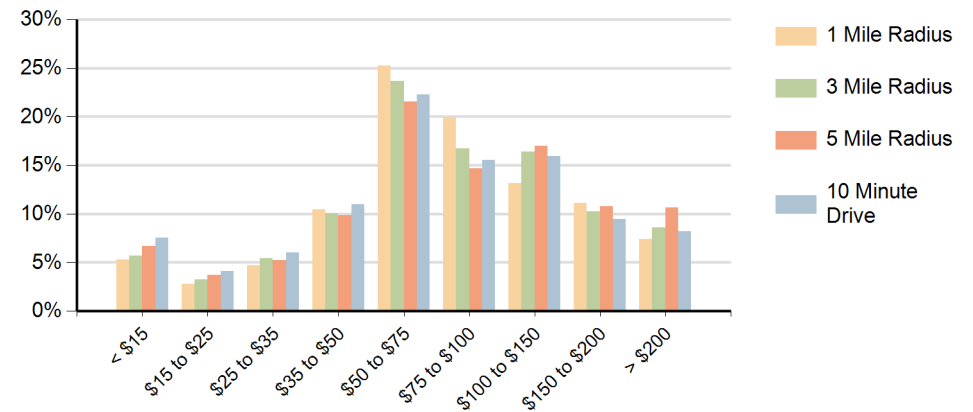


Hispanic Origin (44.6%)

### Population by Age Range



### Households by Income Range (\$000)



| Tech Ridge Center<br>Austin, Texas |                                       | 1 Mile Radius | 3 Mile Radius | 5 Mile Radius | 10 Minute Drive |
|------------------------------------|---------------------------------------|---------------|---------------|---------------|-----------------|
| Population                         | Current Estimated Population          | 8,230         | 139,656       | 298,586       | 212,866         |
|                                    | 2020 Census Population                | 7,867         | 128,365       | 280,299       | 199,359         |
|                                    | 2010 Census Population                | 5,635         | 104,848       | 232,094       | 170,979         |
|                                    | Historical Annual Growth 2010 to 2020 | 3.4%          | 2.0%          | 1.9%          | 1.6%            |
|                                    | Estimated Annual Growth 2020 to 2024  | 1.1%          | 2.0%          | 1.5%          | 1.6%            |
|                                    | Projected Annual Growth 2024 to 2029  | 0.7%          | 1.4%          | 1.2%          | 0.7%            |
| Households                         | Current Estimated Households          | 3,914         | 58,941        | 126,883       | 88,005          |
|                                    | 2020 Census Households                | 3,677         | 53,810        | 117,347       | 80,839          |
|                                    | 2010 Census Households                | 2,554         | 42,835        | 94,524        | 66,208          |
|                                    | Historical Annual Growth 2010 to 2020 | 3.7%          | 2.3%          | 2.2%          | 2.0%            |
|                                    | Estimated Annual Growth 2020 to 2024  | 1.5%          | 2.2%          | 1.9%          | 2.0%            |
|                                    | Projected Annual Growth 2024 to 2029  | 1.2%          | 2.0%          | 1.8%          | 1.4%            |
| Race                               | Population per Household              | 2.1           | 2.3           | 2.3           | 2.4             |
|                                    | White                                 | 38.6%         | 38.6%         | 41.2%         | 37.8%           |
|                                    | Black or African American             | 15.3%         | 13.0%         | 11.5%         | 12.2%           |
|                                    | American Indian                       | 0.8%          | 1.2%          | 1.2%          | 1.4%            |
|                                    | Asian                                 | 13.7%         | 12.5%         | 12.0%         | 10.4%           |
|                                    | Pacific Islander                      | 0.0%          | 0.1%          | 0.1%          | 0.1%            |
|                                    | 2 or More Races                       | 17.0%         | 18.1%         | 18.1%         | 19.2%           |
|                                    | Other Races                           | 14.6%         | 16.5%         | 15.9%         | 19.0%           |
| Hispanic Origin                    |                                       | 37.0%         | 40.2%         | 39.3%         | 44.6%           |