

Lake Grove Commons
Lake Grove, New York

1 Mile Radius

3 Mile Radius

5 Mile Radius

10 Minute Drive

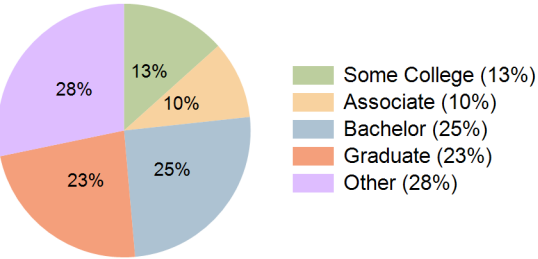
Current Year Demographics

Current Population	9,631	84,762	222,000	61,842
Total Daytime Pop	11,416	78,193	221,435	65,126
Daytime Workers	6,183	33,979	107,431	33,619
Average Household Income	\$172,193	\$178,913	\$176,461	\$179,402
Median Household Income	\$118,052	\$131,747	\$130,554	\$132,251
Total Households	3,611	27,627	71,431	21,157
Median Home Value	\$634,163	\$611,725	\$589,054	\$614,186
Bachelors Degree	24.3%	24.9%	23.4%	25.3%
Graduate Degree	27.3%	22.6%	21.0%	23.1%
Consumer Spending Index	148	153	151	153

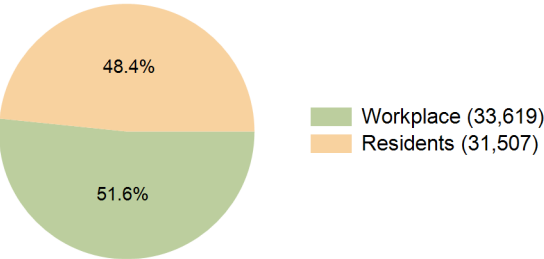
2029 Demographic Projections

Projected Population	9,446	83,267	220,573	60,653
Projected 5 Year Annual Growth Rate (Pop)	-0.4%	-0.4%	-0.1%	-0.4%
Projected Households	3,573	27,378	71,697	20,959
Projected 5 Year Annual Growth Rate (HH)	-0.2%	-0.2%	0.1%	-0.2%

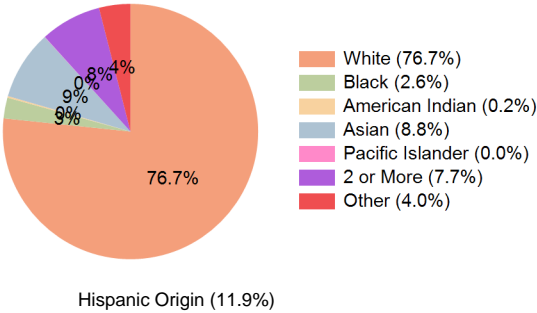
Education (10 Minute Drive)



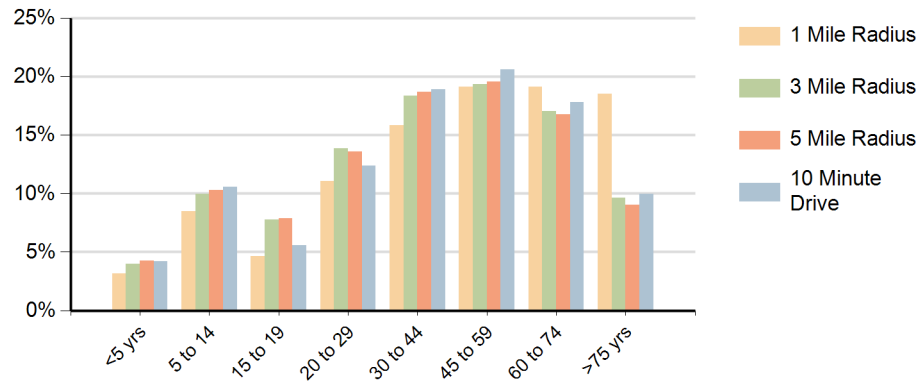
Daytime Population (10 Minute Drive)



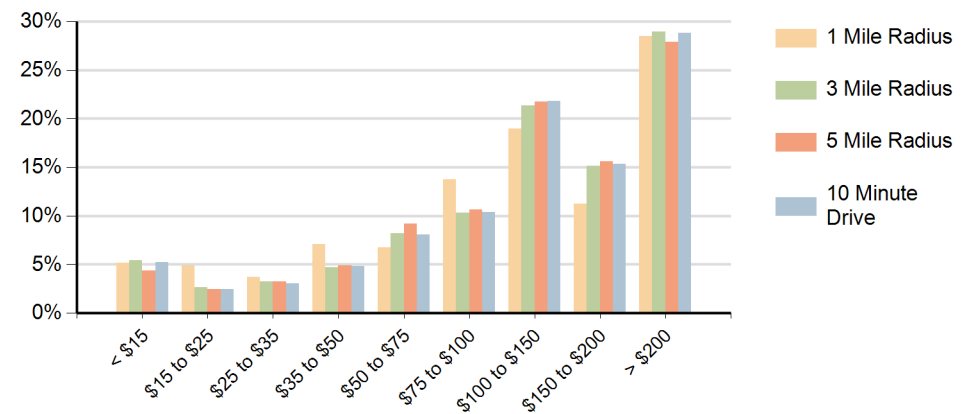
Race (10 Minute Drive)



Population by Age Range



Households by Income Range (\$000)



Lake Grove Commons Lake Grove, New York		1 Mile Radius	3 Mile Radius	5 Mile Radius	10 Minute Drive
Population	Current Estimated Population	9,631	84,762	222,000	61,842
	2020 Census Population	9,486	85,332	220,611	62,555
	2010 Census Population	9,424	86,106	222,156	63,242
	Historical Annual Growth 2010 to 2020	0.1%	-0.1%	-0.1%	-0.1%
	Estimated Annual Growth 2020 to 2024	0.4%	-0.2%	0.2%	-0.3%
	Projected Annual Growth 2024 to 2029	-0.4%	-0.4%	-0.1%	-0.4%
Households	Current Estimated Households	3,611	27,627	71,431	21,157
	2020 Census Households	3,648	27,841	71,031	21,330
	2010 Census Households	3,446	27,599	70,874	21,013
	Historical Annual Growth 2010 to 2020	0.6%	0.1%	0.0%	0.2%
	Estimated Annual Growth 2020 to 2024	-0.2%	-0.2%	0.1%	-0.2%
	Projected Annual Growth 2024 to 2029	-0.2%	-0.2%	0.1%	-0.2%
Race	Population per Household	2.6	2.8	2.9	2.9
	White	76.6%	73.5%	72.4%	76.7%
	Black or African American	2.6%	4.5%	4.8%	2.6%
	American Indian	0.2%	0.2%	0.2%	0.2%
	Asian	10.6%	9.3%	8.4%	8.8%
	Pacific Islander	0.0%	0.0%	0.0%	0.0%
	2 or More Races	7.4%	8.3%	9.0%	7.7%
	Other Races	2.5%	4.2%	5.2%	4.0%
Hispanic Origin		10.4%	12.7%	14.5%	11.9%