

Village at La Floresta
Brea, California

1 Mile Radius

3 Mile Radius

5 Mile Radius

10 Minute Drive

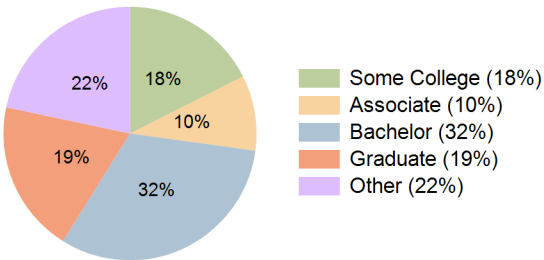
Current Year Demographics

Current Population	11,139	124,177	282,079	135,053
Total Daytime Pop	18,959	121,944	314,482	130,339
Daytime Workers	13,097	61,247	172,739	64,967
Average Household Income	\$179,720	\$162,933	\$157,492	\$162,623
Median Household Income	\$142,763	\$121,836	\$116,337	\$120,908
Total Households	4,061	43,446	96,629	48,020
Median Home Value	\$992,360	\$980,258	\$962,689	\$977,941
Bachelors Degree	35.2%	32.5%	30.0%	31.7%
Graduate Degree	21.6%	19.7%	18.0%	19.4%
Consumer Spending Index	153	141	136	141

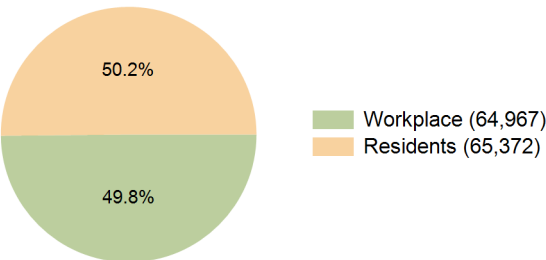
2029 Demographic Projections

Projected Population	11,018	123,365	281,139	134,206
Projected 5 Year Annual Growth Rate (Pop)	-0.2%	-0.1%	-0.1%	-0.1%
Projected Households	4,128	44,365	99,162	49,041
Projected 5 Year Annual Growth Rate (HH)	0.3%	0.4%	0.5%	0.4%

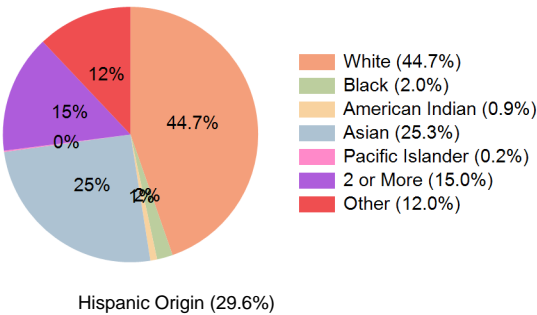
Education (10 Minute Drive)



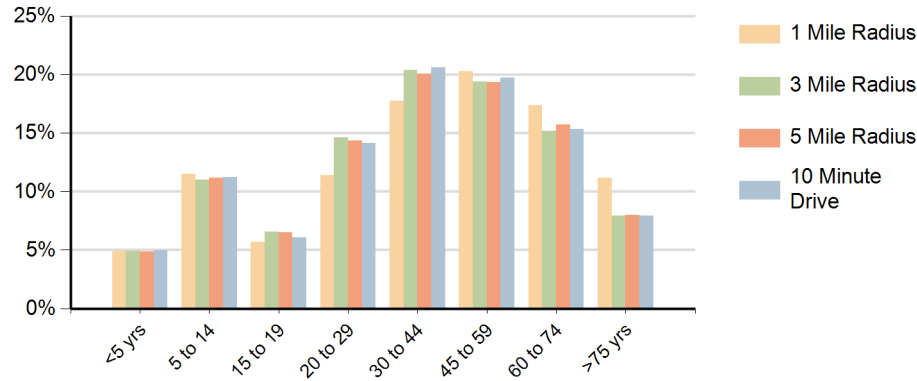
Daytime Population (10 Minute Drive)



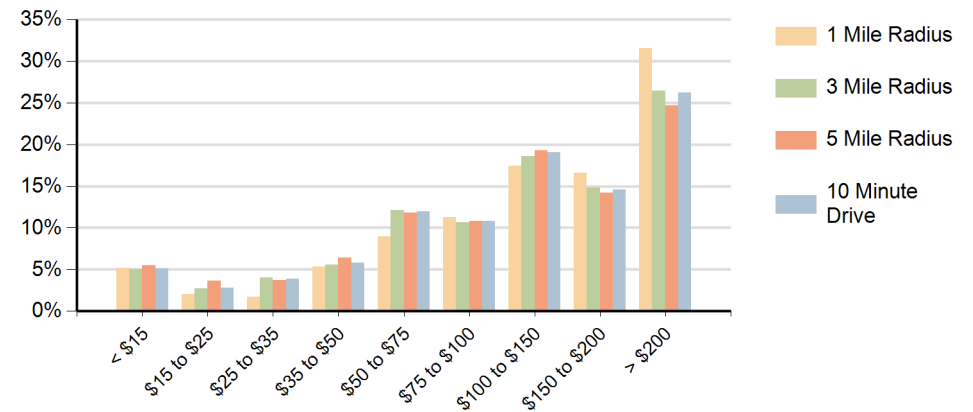
Race (10 Minute Drive)



Population by Age Range



Households by Income Range (\$000)



Village at La Floresta Brea, California		1 Mile Radius	3 Mile Radius	5 Mile Radius	10 Minute Drive
Population	Current Estimated Population	11,139	124,177	282,079	135,053
	2020 Census Population	11,387	123,889	285,155	135,058
	2010 Census Population	8,939	111,150	264,932	122,300
	Historical Annual Growth 2010 to 2020	2.5%	1.1%	0.7%	1.0%
	Estimated Annual Growth 2020 to 2024	-0.5%	0.1%	-0.3%	0.0%
	Projected Annual Growth 2024 to 2029	-0.2%	-0.1%	-0.1%	-0.1%
Households	Current Estimated Households	4,061	43,446	96,629	48,020
	2020 Census Households	4,076	42,839	95,887	47,401
	2010 Census Households	3,086	39,052	89,311	43,415
	Historical Annual Growth 2010 to 2020	2.8%	0.9%	0.7%	0.9%
	Estimated Annual Growth 2020 to 2024	-0.1%	0.3%	0.2%	0.3%
	Projected Annual Growth 2024 to 2029	0.3%	0.4%	0.5%	0.4%
Race	Population per Household	2.7	2.8	2.9	2.8
	White	51.2%	43.7%	40.9%	44.7%
	Black or African American	1.7%	2.0%	2.0%	2.0%
	American Indian	0.5%	0.8%	1.1%	0.9%
	Asian	28.3%	26.5%	25.0%	25.3%
	Pacific Islander	0.1%	0.2%	0.2%	0.2%
	2 or More Races	13.2%	14.8%	15.7%	15.0%
	Other Races	5.0%	12.0%	15.2%	12.0%
Hispanic Origin		19.6%	29.4%	34.3%	29.6%