

Culver Public Market
Culver City, California

1 Mile Radius

3 Mile Radius

5 Mile Radius

10 Minute Drive

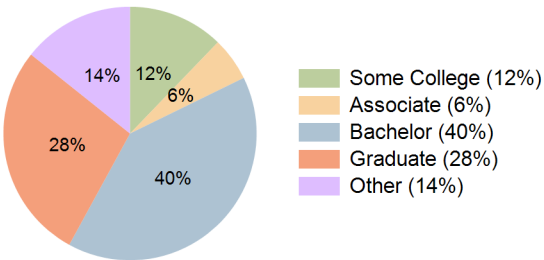
Current Year Demographics

Current Population	41,737	283,552	633,999	207,466
Total Daytime Pop	41,925	327,823	913,545	240,473
Daytime Workers	24,045	209,758	631,624	153,566
Average Household Income	\$152,205	\$176,019	\$165,632	\$174,185
Median Household Income	\$101,989	\$119,428	\$111,811	\$118,784
Total Households	19,247	134,125	294,752	96,210
Median Home Value	\$1,352,989	\$1,452,048	\$1,403,213	\$1,404,902
Bachelors Degree	38.0%	41.0%	38.0%	40.2%
Graduate Degree	20.0%	28.1%	27.1%	27.7%
Consumer Spending Index	132	152	144	151

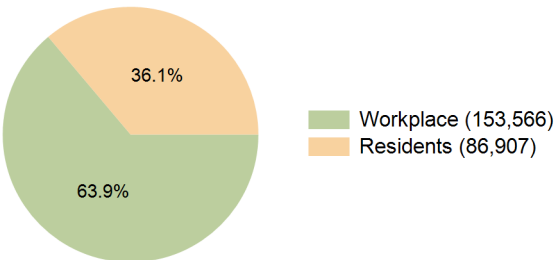
2029 Demographic Projections

Projected Population	41,268	283,002	629,973	206,755
Projected 5 Year Annual Growth Rate (Pop)	-0.2%	0.0%	-0.1%	-0.1%
Projected Households	19,564	137,458	300,879	98,613
Projected 5 Year Annual Growth Rate (HH)	0.3%	0.5%	0.4%	0.5%

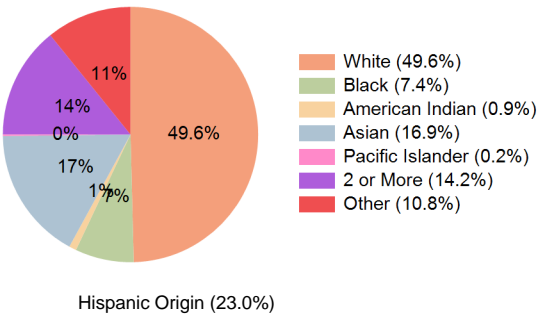
Education (10 Minute Drive)



Daytime Population (10 Minute Drive)

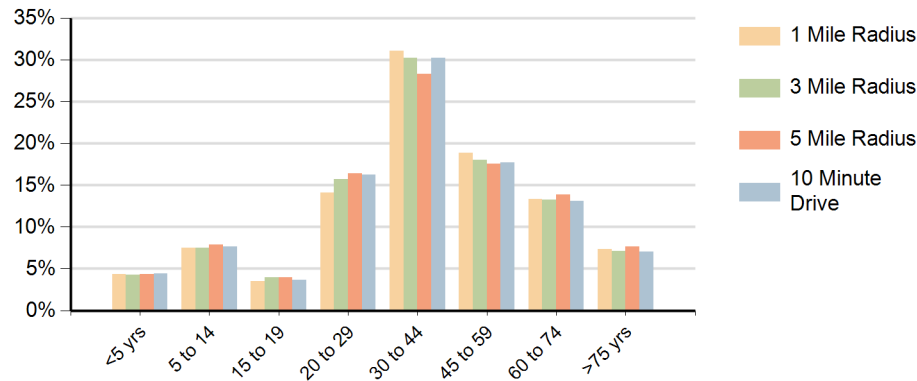


Race (10 Minute Drive)

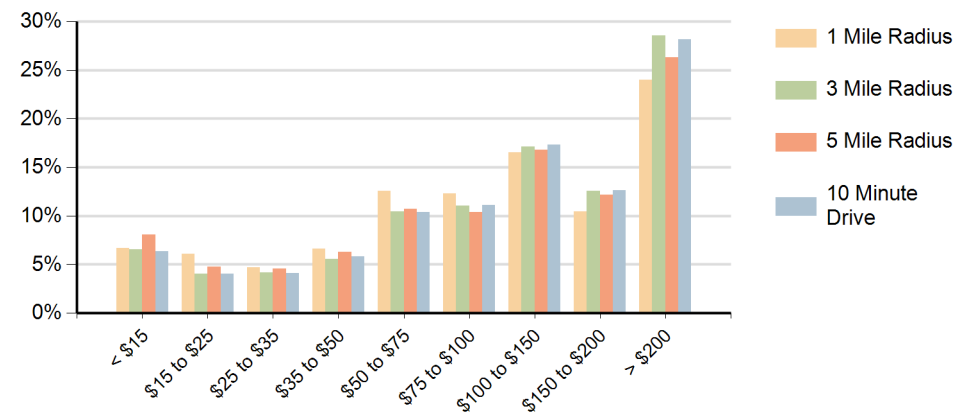


Hispanic Origin (23.0%)

Population by Age Range



Households by Income Range (\$000)



Culver Public Market Culver City, California		1 Mile Radius	3 Mile Radius	5 Mile Radius	10 Minute Drive
Population	Current Estimated Population	41,737	283,552	633,999	207,466
	2020 Census Population	42,002	286,775	641,659	211,650
	2010 Census Population	41,328	266,820	609,064	192,620
	Historical Annual Growth 2010 to 2020	0.2%	0.7%	0.5%	1.0%
	Estimated Annual Growth 2020 to 2024	-0.2%	-0.3%	-0.3%	-0.5%
	Projected Annual Growth 2024 to 2029	-0.2%	0.0%	-0.1%	-0.1%
Households	Current Estimated Households	19,247	134,125	294,752	96,210
	2020 Census Households	19,104	131,913	291,074	95,769
	2010 Census Households	18,127	123,361	278,105	86,874
	Historical Annual Growth 2010 to 2020	0.5%	0.7%	0.5%	1.0%
	Estimated Annual Growth 2020 to 2024	0.2%	0.4%	0.3%	0.1%
	Projected Annual Growth 2024 to 2029	0.3%	0.5%	0.4%	0.5%
Race	Population per Household	2.1	2.0	2.1	2.1
	White	48.8%	53.7%	50.1%	49.6%
	Black or African American	3.8%	5.7%	11.1%	7.4%
	American Indian	1.8%	0.9%	0.9%	0.9%
	Asian	13.4%	15.6%	13.1%	16.9%
	Pacific Islander	0.2%	0.2%	0.2%	0.2%
	2 or More Races	15.3%	14.1%	13.1%	14.2%
	Other Races	16.7%	9.9%	11.6%	10.8%
Hispanic Origin		32.1%	21.8%	22.7%	23.0%