

Village Plaza Chapel Hill, North Carolina	1 Mile Radius	3 Mile Radius	5 Mile Radius	10 Minute Drive
--	---------------	---------------	---------------	-----------------

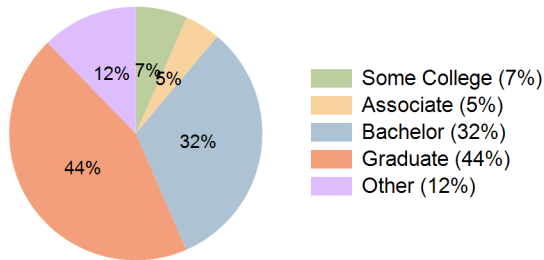
Current Year Demographics

Current Population	9,773	68,832	132,060	55,131
Total Daytime Pop	12,252	102,538	159,161	79,060
Daytime Workers	7,887	69,783	98,989	52,670
Average Household Income	\$130,638	\$137,019	\$139,118	\$140,762
Median Household Income	\$90,227	\$88,611	\$91,875	\$92,795
Total Households	4,437	26,664	54,211	21,479
Median Home Value	\$495,847	\$569,708	\$542,146	\$582,195
Bachelors Degree	28.6%	33.4%	31.8%	32.3%
Graduate Degree	44.4%	43.7%	43.4%	44.3%
Consumer Spending Index	115	121	123	124

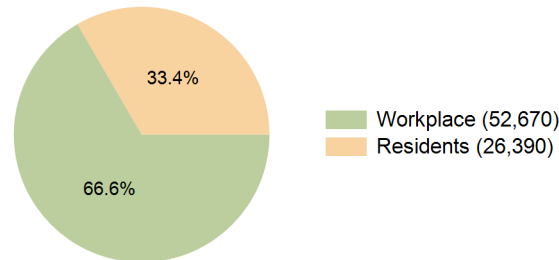
2029 Demographic Projections

Projected Population	12,323	74,754	138,020	60,985
Projected 5 Year Annual Growth Rate (Pop)	4.8%	1.7%	0.9%	2.0%
Projected Households	5,406	29,588	57,469	24,313
Projected 5 Year Annual Growth Rate (HH)	4.0%	2.1%	1.2%	2.5%

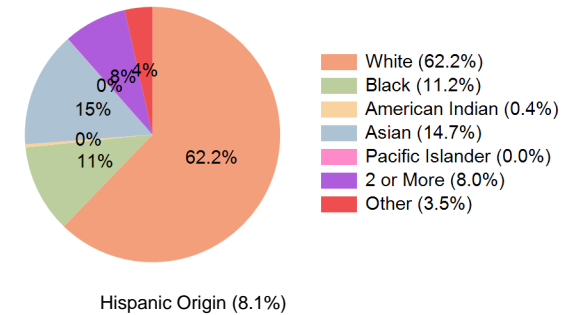
Education (10 Minute Drive)



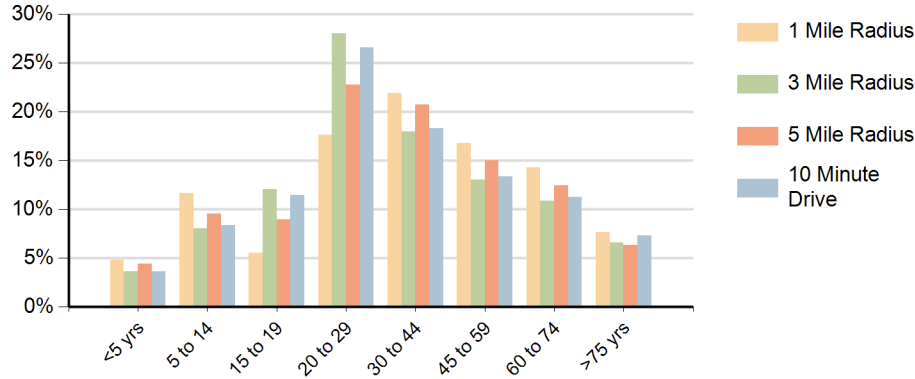
Daytime Population (10 Minute Drive)



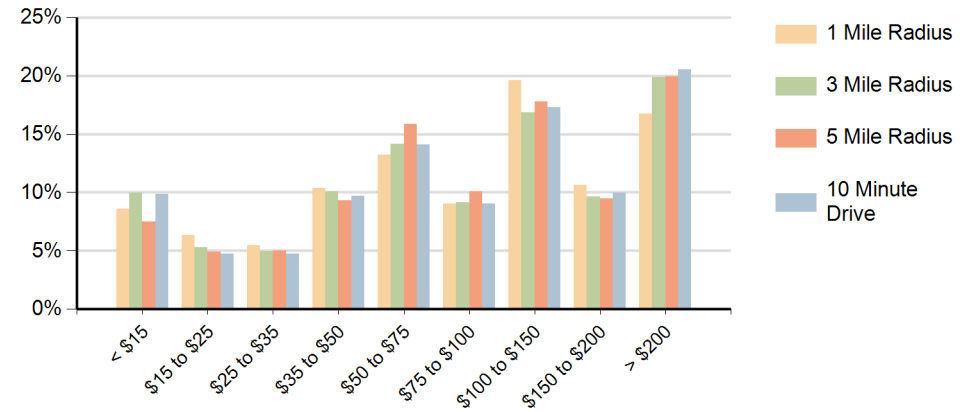
Race (10 Minute Drive)



Population by Age Range



Households by Income Range (\$000)



Village Plaza Chapel Hill, North Carolina		1 Mile Radius	3 Mile Radius	5 Mile Radius	10 Minute Drive
Population	Current Estimated Population	9,773	68,832	132,060	55,131
	2020 Census Population	8,327	66,294	128,397	52,711
	2010 Census Population	7,512	58,713	115,297	46,632
	Historical Annual Growth 2010 to 2020	1.0%	1.2%	1.1%	1.2%
	Estimated Annual Growth 2020 to 2024	3.8%	0.9%	0.7%	1.1%
	Projected Annual Growth 2024 to 2029	4.8%	1.7%	0.9%	2.0%
Households	Current Estimated Households	4,437	26,664	54,211	21,479
	2020 Census Households	3,794	25,061	52,127	19,939
	2010 Census Households	3,297	21,983	46,589	17,592
	Historical Annual Growth 2010 to 2020	1.4%	1.3%	1.1%	1.3%
	Estimated Annual Growth 2020 to 2024	3.8%	1.5%	0.9%	1.8%
	Projected Annual Growth 2024 to 2029	4.0%	2.1%	1.2%	2.5%
	Population per Household	2.2	2.2	2.2	2.2
Race	White	57.2%	62.1%	62.0%	62.2%
	Black or African American	13.1%	11.5%	12.4%	11.2%
	American Indian	0.5%	0.4%	0.5%	0.4%
	Asian	17.6%	14.6%	11.8%	14.7%
	Pacific Islander	0.0%	0.0%	0.0%	0.0%
	2 or More Races	8.4%	7.9%	8.6%	8.0%
	Other Races	3.2%	3.5%	4.7%	3.5%
	Hispanic Origin	8.0%	8.1%	10.0%	8.1%