

Shoppes of Burnt Mills
Silver Spring, Maryland

1 Mile Radius

3 Mile Radius

5 Mile Radius

10 Minute Drive

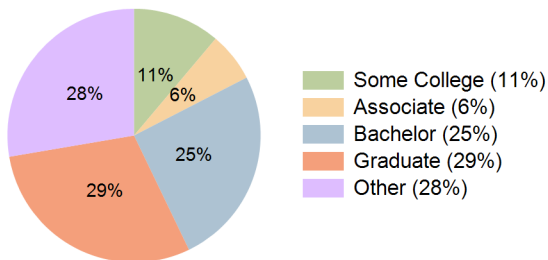
Current Year Demographics

Current Population	17,603	178,182	467,773	148,291
Total Daytime Pop	15,550	155,616	411,919	129,712
Daytime Workers	7,183	74,815	197,362	62,170
Average Household Income	\$187,292	\$148,666	\$149,312	\$156,371
Median Household Income	\$142,798	\$102,808	\$103,718	\$109,614
Total Households	5,870	63,243	161,457	52,306
Median Home Value	\$607,926	\$599,725	\$604,320	\$613,060
Bachelors Degree	27.1%	24.0%	24.5%	25.4%
Graduate Degree	30.6%	27.7%	27.1%	29.5%
Consumer Spending Index	162	130	131	136

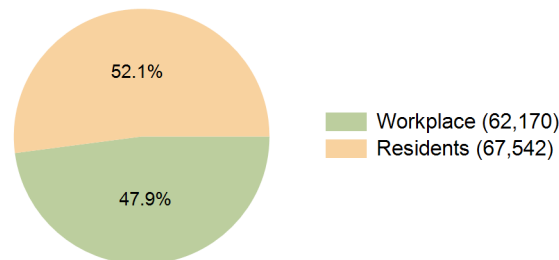
2029 Demographic Projections

Projected Population	17,617	179,843	472,483	148,488
Projected 5 Year Annual Growth Rate (Pop)	0.0%	0.2%	0.2%	0.0%
Projected Households	5,821	63,973	163,811	52,379
Projected 5 Year Annual Growth Rate (HH)	-0.2%	0.2%	0.3%	0.0%

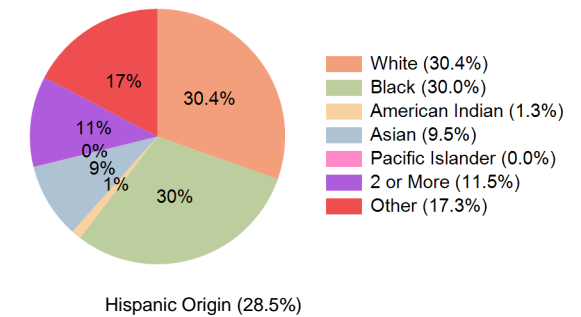
Education (10 Minute Drive)



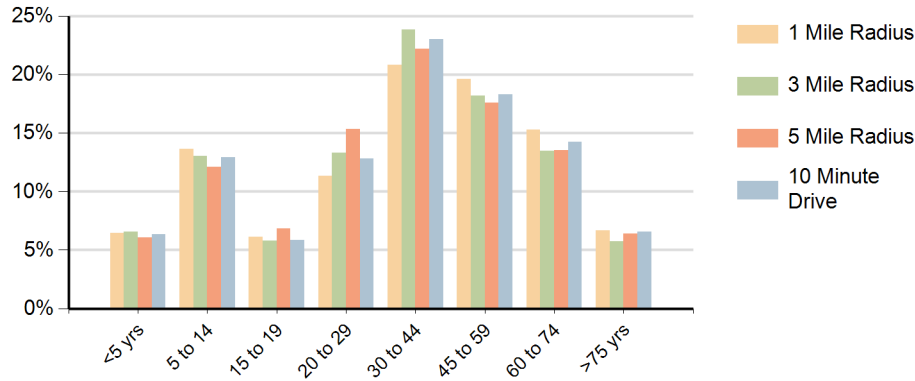
Daytime Population (10 Minute Drive)



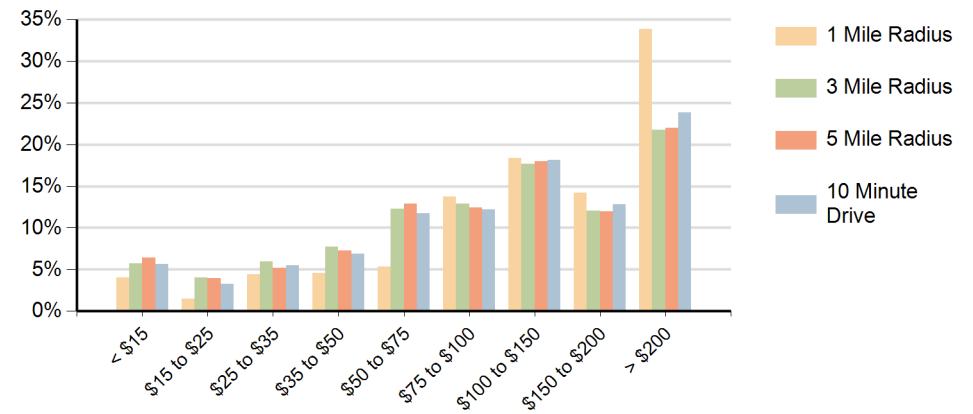
Race (10 Minute Drive)



Population by Age Range



Households by Income Range (\$000)



Shoppes of Burnt Mills Silver Spring, Maryland		1 Mile Radius	3 Mile Radius	5 Mile Radius	10 Minute Drive
Population	Current Estimated Population	17,603	178,182	467,773	148,291
	2020 Census Population	17,824	180,155	469,635	150,074
	2010 Census Population	17,104	164,922	426,791	139,087
	Historical Annual Growth 2010 to 2020	0.4%	0.9%	1.0%	0.8%
	Estimated Annual Growth 2020 to 2024	-0.3%	-0.3%	-0.1%	-0.3%
	Projected Annual Growth 2024 to 2029	0.0%	0.2%	0.2%	0.0%
Households	Current Estimated Households	5,870	63,243	161,457	52,306
	2020 Census Households	5,961	63,907	162,063	52,871
	2010 Census Households	6,035	58,944	148,536	49,940
	Historical Annual Growth 2010 to 2020	-0.1%	0.8%	0.9%	0.6%
	Estimated Annual Growth 2020 to 2024	-0.4%	-0.3%	-0.1%	-0.3%
	Projected Annual Growth 2024 to 2029	-0.2%	0.2%	0.3%	0.0%
	Population per Household	3.0	2.8	2.8	2.8
Race	White	38.5%	28.8%	29.7%	30.4%
	Black or African American	31.2%	28.9%	28.1%	30.0%
	American Indian	0.8%	1.5%	1.3%	1.3%
	Asian	8.1%	8.2%	9.1%	9.5%
	Pacific Islander	0.0%	0.0%	0.1%	0.0%
	2 or More Races	10.4%	12.2%	11.7%	11.5%
	Other Races	11.2%	20.5%	20.0%	17.3%
	Hispanic Origin	19.6%	32.9%	31.7%	28.5%