

CityLine Market
Richardson, Texas

1 Mile Radius

3 Mile Radius

5 Mile Radius

10 Minute Drive

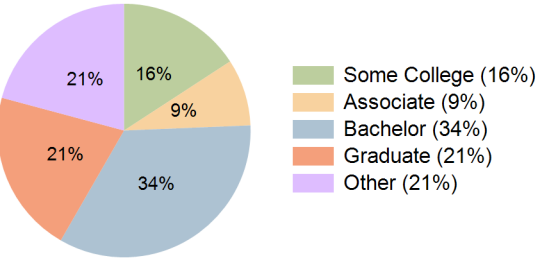
Current Year Demographics

Current Population	10,845	105,881	318,628	165,717
Total Daytime Pop	17,461	166,428	376,837	240,746
Daytime Workers	13,387	119,041	226,085	164,064
Average Household Income	\$118,968	\$124,318	\$127,279	\$123,707
Median Household Income	\$88,907	\$88,037	\$92,408	\$88,364
Total Households	6,152	44,709	122,969	67,293
Median Home Value	\$523,345	\$392,755	\$390,032	\$384,228
Bachelors Degree	43.3%	34.3%	33.2%	34.0%
Graduate Degree	28.5%	21.1%	20.9%	20.8%
Consumer Spending Index	105	110	112	110

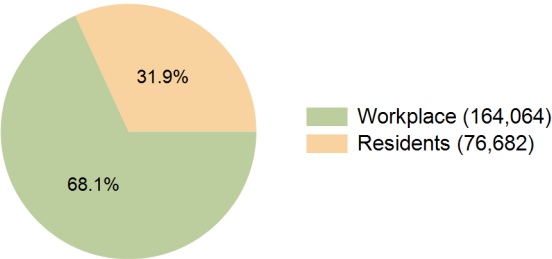
2029 Demographic Projections

Projected Population	11,971	110,773	323,230	171,319
Projected 5 Year Annual Growth Rate (Pop)	2.0%	0.9%	0.3%	0.7%
Projected Households	6,955	47,775	126,996	71,190
Projected 5 Year Annual Growth Rate (HH)	2.5%	1.3%	0.7%	1.1%

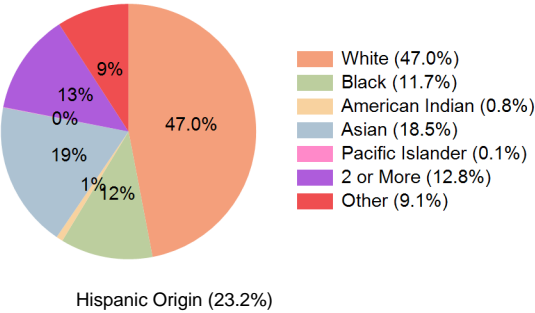
Education (10 Minute Drive)



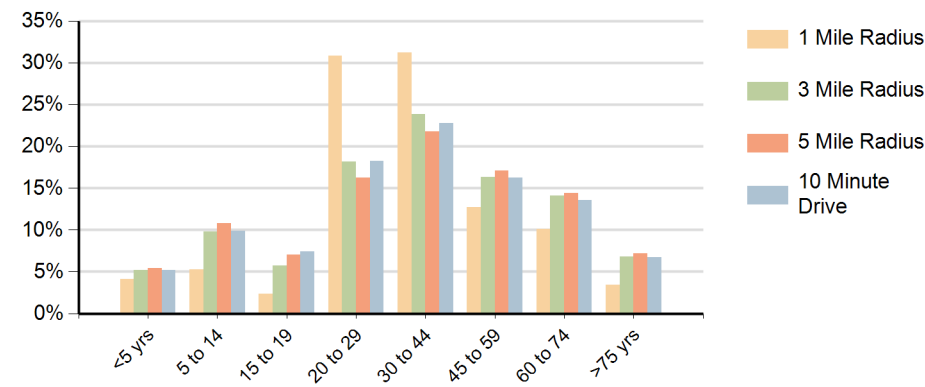
Daytime Population (10 Minute Drive)



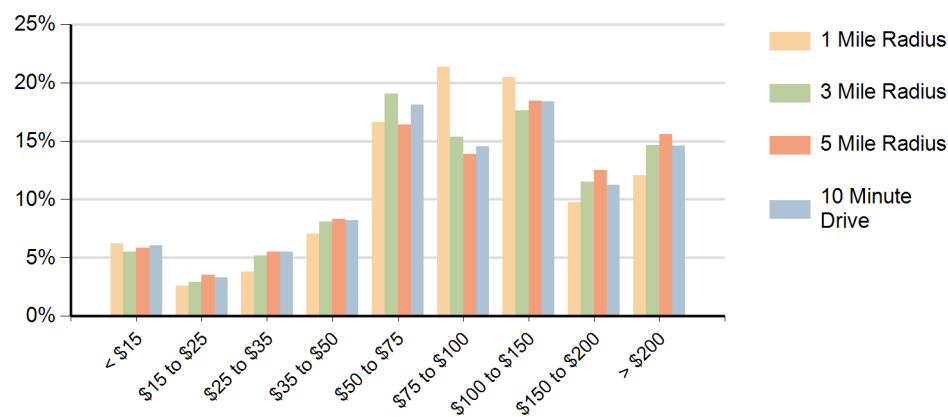
Race (10 Minute Drive)



Population by Age Range



Households by Income Range (\$000)



CityLine Market Richardson, Texas		1 Mile Radius	3 Mile Radius	5 Mile Radius	10 Minute Drive
Population	Current Estimated Population	10,845	105,881	318,628	165,717
	2020 Census Population	9,927	99,918	309,511	157,857
	2010 Census Population	3,919	84,456	266,422	127,946
	Historical Annual Growth 2010 to 2020	9.7%	1.7%	1.5%	2.1%
	Estimated Annual Growth 2020 to 2024	2.1%	1.4%	0.7%	1.2%
	Projected Annual Growth 2024 to 2029	2.0%	0.9%	0.3%	0.7%
Households	Current Estimated Households	6,152	44,709	122,969	67,293
	2020 Census Households	5,551	41,119	118,289	63,064
	2010 Census Households	1,788	32,250	101,784	48,775
	Historical Annual Growth 2010 to 2020	12.0%	2.5%	1.5%	2.6%
	Estimated Annual Growth 2020 to 2024	2.5%	2.0%	0.9%	1.5%
	Projected Annual Growth 2024 to 2029	2.5%	1.3%	0.7%	1.1%
Race	Population per Household	1.8	2.3	2.5	2.4
	White	45.5%	48.7%	47.4%	47.0%
	Black or African American	16.3%	11.5%	11.6%	11.7%
	American Indian	0.4%	1.0%	0.8%	0.8%
	Asian	23.9%	15.6%	19.5%	18.5%
	Pacific Islander	0.0%	0.1%	0.1%	0.1%
	2 or More Races	9.7%	13.2%	12.4%	12.8%
	Other Races	4.2%	10.1%	8.2%	9.1%
Hispanic Origin		12.9%	25.0%	21.4%	23.2%