

Hilltop Village  
Thornton, Colorado

1 Mile Radius

3 Mile Radius

5 Mile Radius

10 Minute Drive

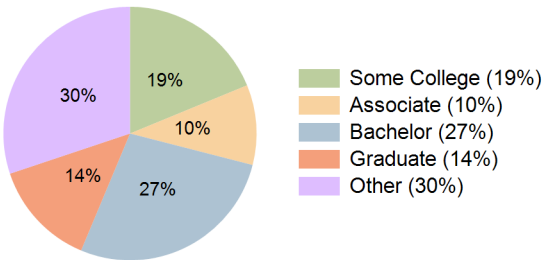
Current Year Demographics

Current Population	15,605	89,091	190,872	106,249
Total Daytime Pop	9,702	62,199	148,220	74,582
Daytime Workers	2,689	22,771	61,922	27,849
Average Household Income	\$181,547	\$149,646	\$139,644	\$147,397
Median Household Income	\$157,840	\$127,964	\$114,860	\$124,265
Total Households	4,972	31,260	68,629	37,704
Median Home Value	\$623,164	\$600,698	\$590,994	\$597,783
Bachelors Degree	32.9%	27.4%	26.8%	27.3%
Graduate Degree	17.6%	13.6%	13.1%	13.6%
Consumer Spending Index	153	127	120	126

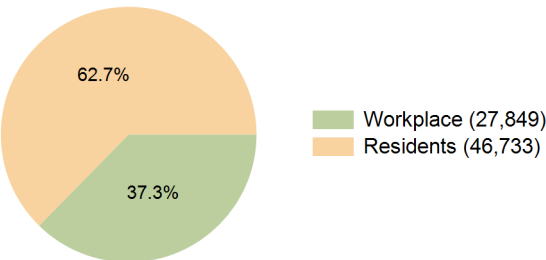
2030 Demographic Projections

Projected Population	15,625	92,683	196,755	110,272
Projected 5 Year Annual Growth Rate (Pop)	0.0%	0.8%	0.6%	0.8%
Projected Households	5,025	32,889	71,475	39,571
Projected 5 Year Annual Growth Rate (HH)	0.2%	1.0%	0.8%	1.0%

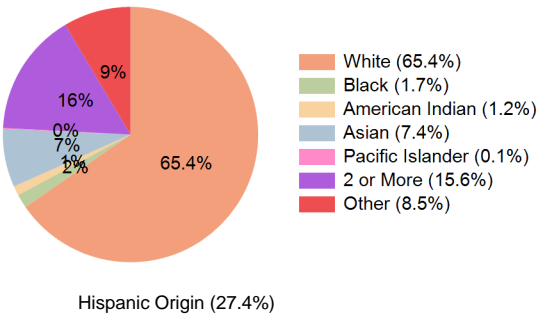
Education (10 Minute Drive)



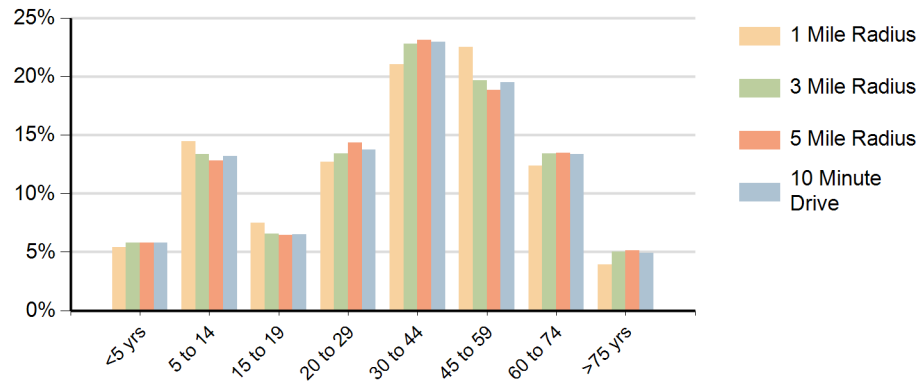
Daytime Population (10 Minute Drive)



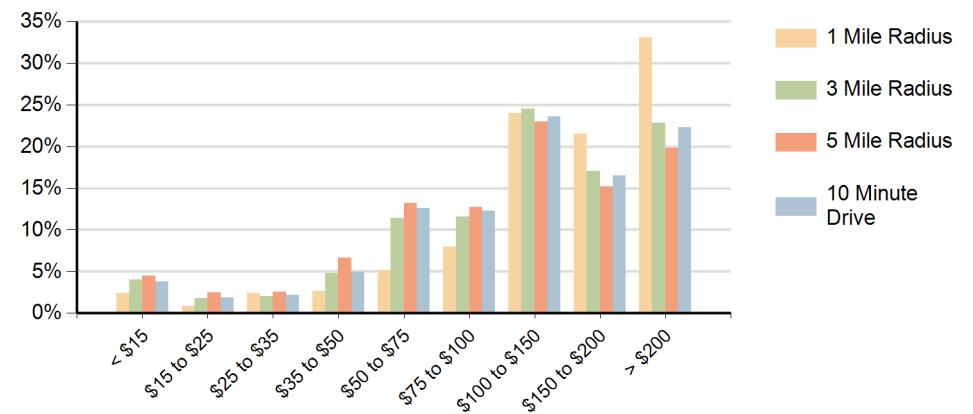
Race (10 Minute Drive)



### Population by Age Range



### Households by Income Range (\$000)



Hilltop Village Thornton, Colorado		1 Mile Radius	3 Mile Radius	5 Mile Radius	10 Minute Drive
Population	Current Estimated Population	15,605	89,091	190,872	106,249
	2020 Census Population	15,904	84,469	183,302	101,764
	2010 Census Population	12,923	69,632	153,153	83,815
	Historical Annual Growth 2010 to 2020	2.1%	2.0%	1.8%	2.0%
	Estimated Annual Growth 2020 to 2025	-0.4%	1.0%	0.8%	0.8%
	Projected Annual Growth 2025 to 2030	0.0%	0.8%	0.6%	0.8%
Households	Current Estimated Households	4,972	31,260	68,629	37,704
	2020 Census Households	4,982	29,026	64,931	35,387
	2010 Census Households	4,036	23,931	54,553	29,238
	Historical Annual Growth 2010 to 2020	2.1%	2.0%	1.8%	1.9%
	Estimated Annual Growth 2020 to 2025	0.0%	1.4%	1.1%	1.2%
	Projected Annual Growth 2025 to 2030	0.2%	1.0%	0.8%	1.0%
Race	Population per Household	3.1	2.8	2.8	2.8
	White	66.8%	65.7%	63.3%	65.4%
	Black or African American	1.6%	1.7%	1.9%	1.7%
	American Indian	0.9%	1.2%	1.4%	1.2%
	Asian	9.0%	7.5%	6.6%	7.4%
	Pacific Islander	0.1%	0.1%	0.1%	0.1%
	2 or More Races	15.5%	15.6%	16.3%	15.6%
	Other Races	6.1%	8.2%	10.4%	8.5%
Hispanic Origin		22.8%	27.0%	30.8%	27.4%