

Brick Walk Fairfield, Connecticut	1 Mile Radius	3 Mile Radius	5 Mile Radius	10 Minute Drive
--------------------------------------	---------------	---------------	---------------	-----------------

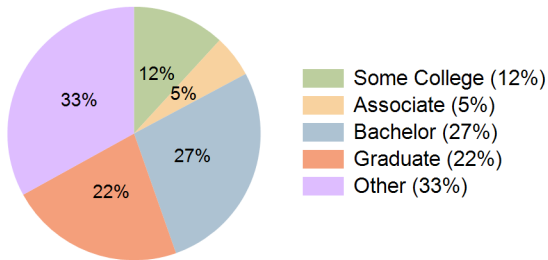
Current Year Demographics

Current Population	11,203	57,865	154,169	94,086
Total Daytime Pop	16,087	59,435	150,474	100,134
Daytime Workers	10,469	31,953	72,872	53,084
Average Household Income	\$234,171	\$182,065	\$144,582	\$142,373
Median Household Income	\$176,581	\$119,298	\$83,285	\$82,001
Total Households	3,751	21,430	56,426	35,042
Median Home Value	\$789,994	\$679,877	\$606,266	\$633,522
Bachelors Degree	45.0%	34.8%	26.0%	27.4%
Graduate Degree	36.0%	29.7%	21.5%	22.4%
Consumer Spending Index	199	158	127	125

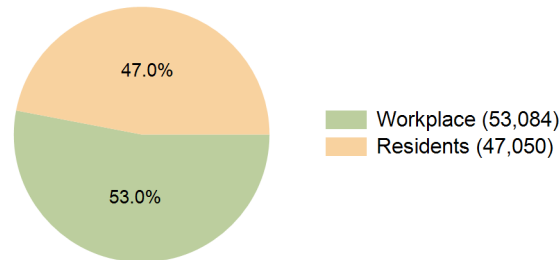
2029 Demographic Projections

Projected Population	11,012	57,305	153,466	94,225
Projected 5 Year Annual Growth Rate (Pop)	-0.3%	-0.2%	-0.1%	0.0%
Projected Households	3,741	21,635	57,371	35,852
Projected 5 Year Annual Growth Rate (HH)	-0.1%	0.2%	0.3%	0.5%

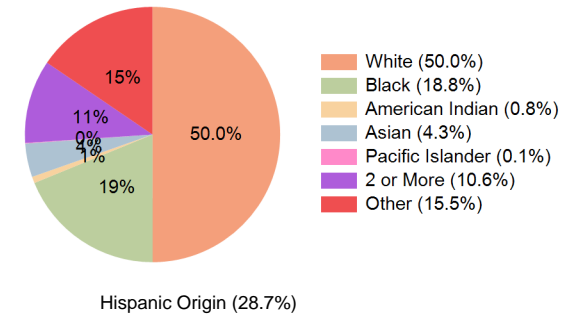
Education (10 Minute Drive)



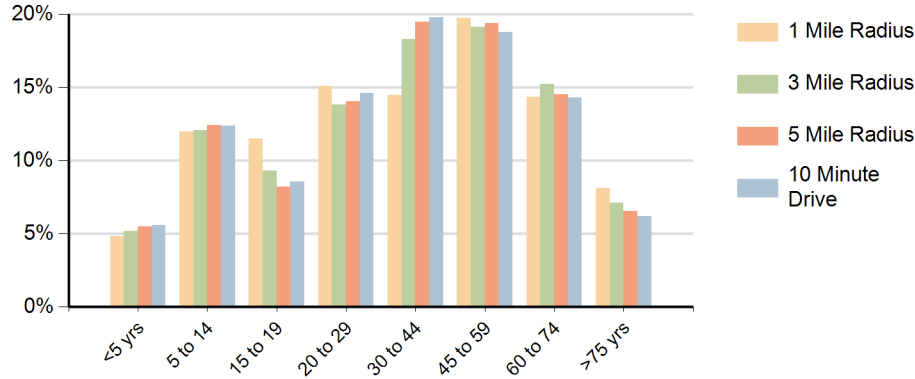
Daytime Population (10 Minute Drive)



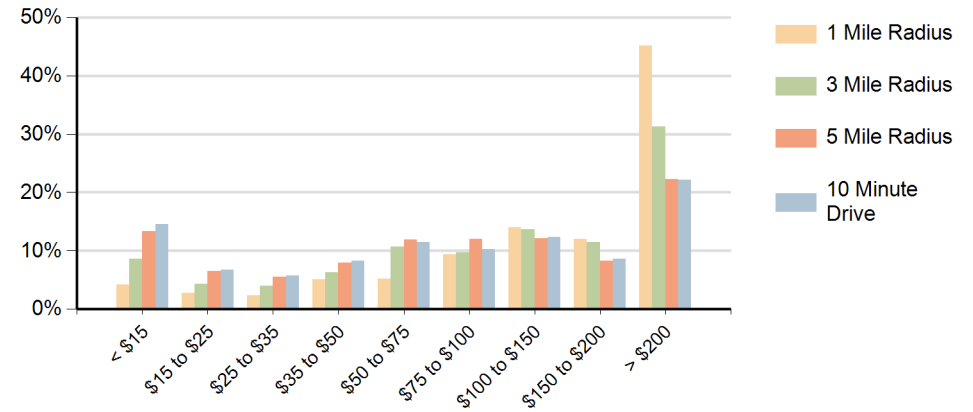
Race (10 Minute Drive)



Population by Age Range



Households by Income Range (\$000)



Brick Walk Fairfield, Connecticut		1 Mile Radius	3 Mile Radius	5 Mile Radius	10 Minute Drive
Population	Current Estimated Population	11,203	57,865	154,169	94,086
	2020 Census Population	11,089	56,661	153,169	92,794
	2010 Census Population	10,741	54,471	148,710	89,522
	Historical Annual Growth 2010 to 2020	0.3%	0.4%	0.3%	0.4%
	Estimated Annual Growth 2020 to 2024	0.2%	0.5%	0.2%	0.3%
	Projected Annual Growth 2024 to 2029	-0.3%	-0.2%	-0.1%	0.0%
Households	Current Estimated Households	3,751	21,430	56,426	35,042
	2020 Census Households	3,725	20,867	55,326	34,187
	2010 Census Households	3,629	20,024	52,702	32,136
	Historical Annual Growth 2010 to 2020	0.3%	0.4%	0.5%	0.6%
	Estimated Annual Growth 2020 to 2024	0.2%	0.6%	0.5%	0.6%
	Projected Annual Growth 2024 to 2029	-0.1%	0.2%	0.3%	0.5%
Population per Household		2.6	2.5	2.6	2.6
Race	White	86.8%	68.1%	48.6%	50.0%
	Black or African American	1.4%	8.9%	19.2%	18.8%
	American Indian	0.1%	0.6%	0.7%	0.8%
	Asian	3.5%	4.4%	4.0%	4.3%
	Pacific Islander	0.0%	0.0%	0.1%	0.1%
	2 or More Races	6.9%	9.4%	11.4%	10.6%
	Other Races	1.4%	8.6%	16.0%	15.5%
	Hispanic Origin	7.1%	18.6%	28.6%	28.7%