

Black Rock Shopping Center
Fairfield, Connecticut

1 Mile Radius

3 Mile Radius

5 Mile Radius

10 Minute Drive

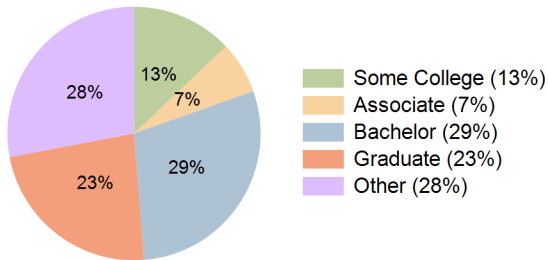
Current Year Demographics

Current Population	10,322	121,036	230,295	83,446
Total Daytime Pop	9,437	102,418	210,233	69,775
Daytime Workers	4,515	42,127	93,811	28,082
Average Household Income	\$189,161	\$133,586	\$130,416	\$150,810
Median Household Income	\$127,583	\$81,983	\$79,015	\$93,154
Total Households	3,853	42,970	82,622	28,927
Median Home Value	\$631,296	\$507,611	\$489,526	\$536,819
Bachelors Degree	34.7%	25.4%	23.6%	29.2%
Graduate Degree	28.4%	20.0%	18.1%	23.3%
Consumer Spending Index	161	118	115	132

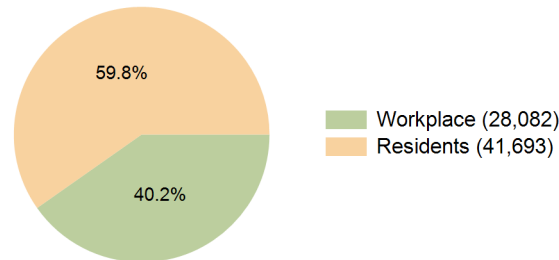
2029 Demographic Projections

Projected Population	10,070	119,731	229,886	82,732
Projected 5 Year Annual Growth Rate (Pop)	-0.5%	-0.2%	0.0%	-0.2%
Projected Households	3,828	43,341	84,128	29,264
Projected 5 Year Annual Growth Rate (HH)	-0.1%	0.2%	0.4%	0.2%

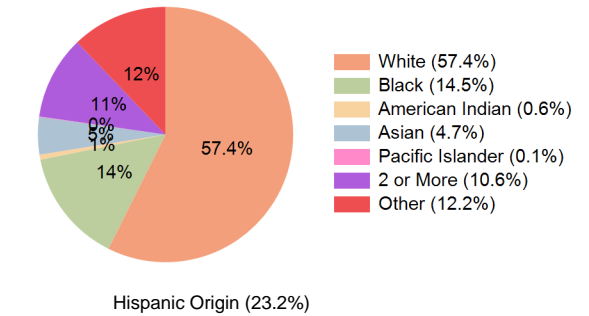
Education (10 Minute Drive)



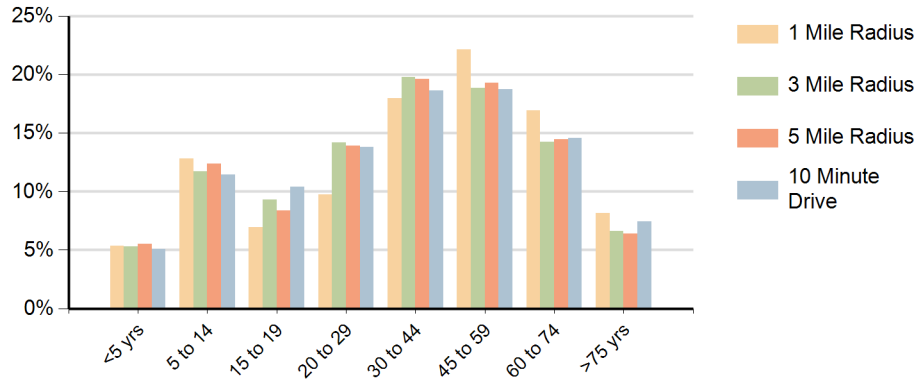
Daytime Population (10 Minute Drive)



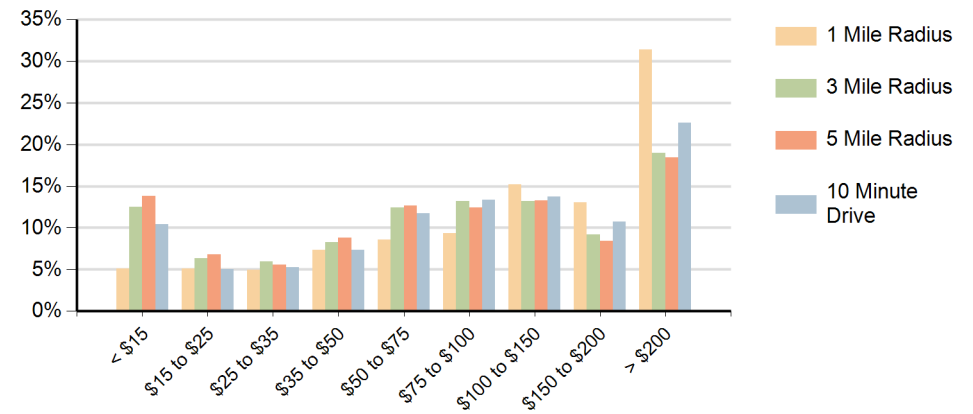
Race (10 Minute Drive)



Population by Age Range



Households by Income Range (\$000)



Black Rock Shopping Center Fairfield, Connecticut		1 Mile Radius	3 Mile Radius	5 Mile Radius	10 Minute Drive
Population	Current Estimated Population	10,322	121,036	230,295	83,446
	2020 Census Population	10,359	119,748	226,892	82,477
	2010 Census Population	9,963	115,825	220,120	79,310
	Historical Annual Growth 2010 to 2020	0.4%	0.3%	0.3%	0.4%
	Estimated Annual Growth 2020 to 2024	-0.1%	0.3%	0.4%	0.3%
	Projected Annual Growth 2024 to 2029	-0.5%	-0.2%	0.0%	-0.2%
Households	Current Estimated Households	3,853	42,970	82,622	28,927
	2020 Census Households	3,832	42,212	80,608	28,389
	2010 Census Households	3,781	40,413	77,242	27,411
	Historical Annual Growth 2010 to 2020	0.1%	0.4%	0.4%	0.4%
	Estimated Annual Growth 2020 to 2024	0.1%	0.4%	0.6%	0.4%
	Projected Annual Growth 2024 to 2029	-0.1%	0.2%	0.4%	0.2%
Population per Household		2.7	2.6	2.7	2.7
Race	White	79.1%	48.0%	42.5%	57.4%
	Black or African American	2.3%	19.0%	24.0%	14.5%
	American Indian	0.2%	0.8%	0.8%	0.6%
	Asian	6.9%	4.0%	3.7%	4.7%
	Pacific Islander	0.0%	0.1%	0.1%	0.1%
	2 or More Races	8.5%	11.6%	11.9%	10.6%
	Other Races	3.0%	16.6%	17.1%	12.2%
	Hispanic Origin	8.3%	28.9%	31.3%	23.2%