

East San Marco
Jacksonville, Florida

1 Mile Radius

3 Mile Radius

5 Mile Radius

10 Minute Drive

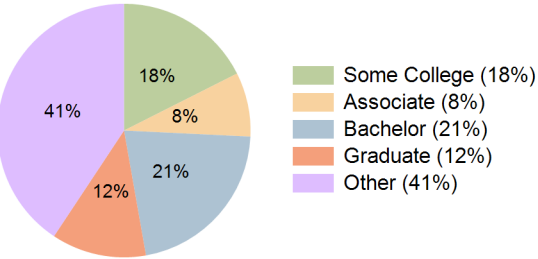
Current Year Demographics

Current Population	9,289	66,016	208,869	99,069
Total Daytime Pop	18,939	153,331	316,216	209,848
Daytime Workers	14,394	123,885	213,008	163,316
Average Household Income	\$101,772	\$87,451	\$79,870	\$83,661
Median Household Income	\$66,385	\$54,982	\$49,470	\$52,372
Total Households	4,824	29,841	89,138	42,895
Median Home Value	\$449,540	\$375,414	\$308,886	\$346,930
Bachelors Degree	29.3%	23.2%	20.1%	21.5%
Graduate Degree	21.9%	13.9%	10.0%	12.1%
Consumer Spending Index	91	78	72	75

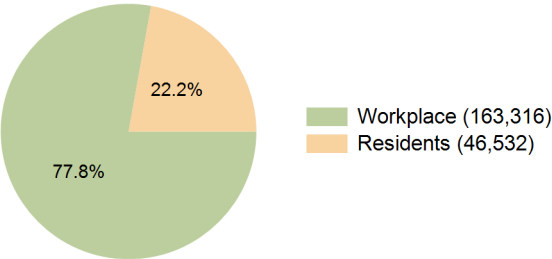
2029 Demographic Projections

Projected Population	11,373	70,555	213,924	103,740
Projected 5 Year Annual Growth Rate (Pop)	4.1%	1.3%	0.5%	0.9%
Projected Households	6,179	32,939	93,457	46,282
Projected 5 Year Annual Growth Rate (HH)	5.1%	2.0%	1.0%	1.5%

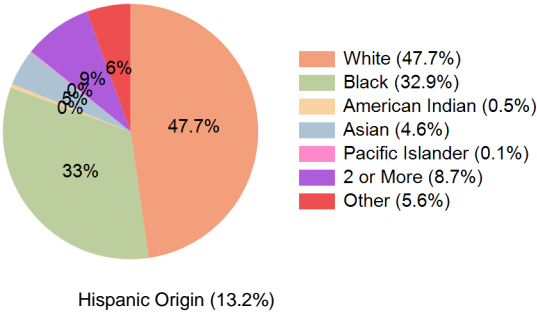
Education (10 Minute Drive)



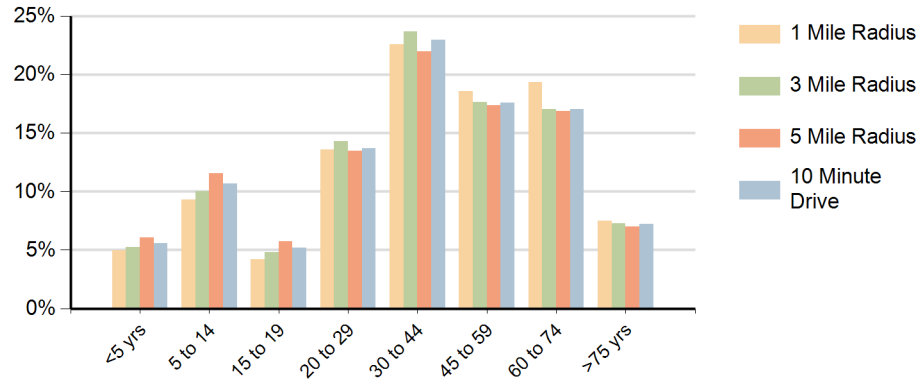
Daytime Population (10 Minute Drive)



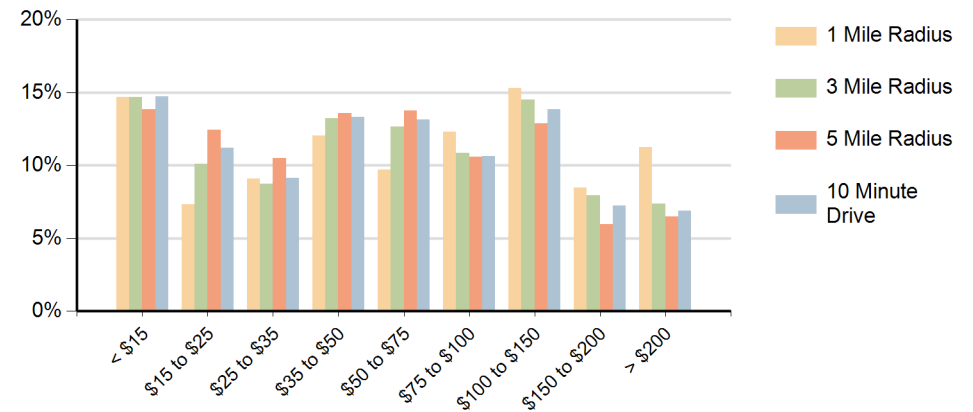
Race (10 Minute Drive)



Population by Age Range



Households by Income Range (\$000)



East San Marco Jacksonville, Florida		1 Mile Radius	3 Mile Radius	5 Mile Radius	10 Minute Drive
Population	Current Estimated Population	9,289	66,016	208,869	99,069
	2020 Census Population	7,451	62,453	205,185	95,504
	2010 Census Population	6,814	58,867	187,948	88,898
	Historical Annual Growth 2010 to 2020	0.9%	0.6%	0.9%	0.7%
	Estimated Annual Growth 2020 to 2024	5.3%	1.3%	0.4%	0.9%
	Projected Annual Growth 2024 to 2029	4.1%	1.3%	0.5%	0.9%
Households	Current Estimated Households	4,824	29,841	89,138	42,895
	2020 Census Households	3,793	27,622	86,169	40,447
	2010 Census Households	3,500	25,153	78,235	36,778
	Historical Annual Growth 2010 to 2020	0.8%	0.9%	1.0%	1.0%
	Estimated Annual Growth 2020 to 2024	5.8%	1.8%	0.8%	1.4%
	Projected Annual Growth 2024 to 2029	5.1%	2.0%	1.0%	1.5%
Race	Population per Household	1.9	2.0	2.2	2.2
	White	63.4%	51.4%	43.9%	47.7%
	Black or African American	17.0%	29.6%	38.0%	32.9%
	American Indian	0.5%	0.5%	0.5%	0.5%
	Asian	7.5%	4.9%	3.3%	4.6%
	Pacific Islander	0.2%	0.1%	0.1%	0.1%
	2 or More Races	8.8%	8.7%	8.9%	8.7%
	Other Races	2.6%	4.8%	5.3%	5.6%
Hispanic Origin		10.2%	12.6%	12.8%	13.2%