

University Commons Boca Raton, Florida	1 Mile Radius	3 Mile Radius	5 Mile Radius	10 Minute Drive
---	---------------	---------------	---------------	-----------------

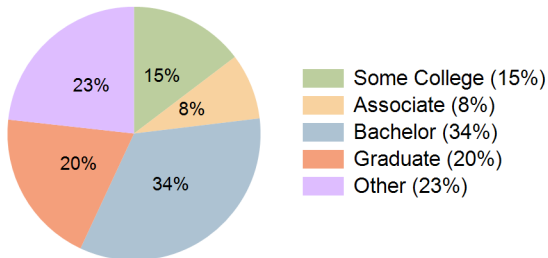
### Current Year Demographics

Current Population	10,486	100,038	247,147	98,650
Total Daytime Pop	29,152	179,829	345,157	191,104
Daytime Workers	22,807	127,345	212,696	141,471
Average Household Income	\$118,034	\$148,082	\$131,308	\$126,623
Median Household Income	\$81,789	\$97,365	\$81,076	\$80,996
Total Households	3,047	42,272	113,993	40,493
Median Home Value	\$507,552	\$636,989	\$553,988	\$584,223
Bachelors Degree	33.3%	37.0%	31.9%	33.9%
Graduate Degree	16.2%	23.6%	21.3%	19.8%
Consumer Spending Index	104	130	116	112

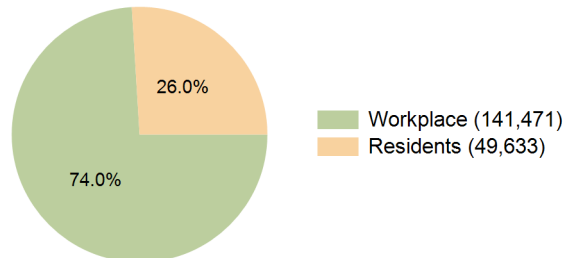
### 2029 Demographic Projections

Projected Population	10,504	102,815	250,714	100,457
Projected 5 Year Annual Growth Rate (Pop)	0.0%	0.6%	0.3%	0.4%
Projected Households	3,076	44,009	116,730	41,709
Projected 5 Year Annual Growth Rate (HH)	0.2%	0.8%	0.5%	0.6%

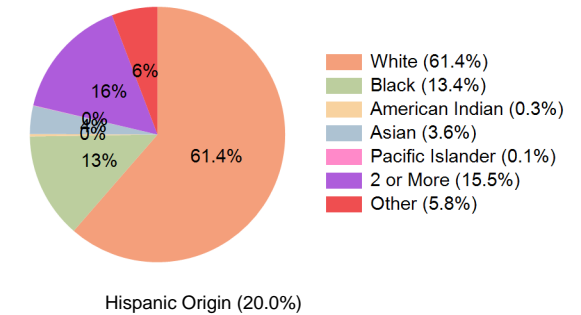
Education (10 Minute Drive)



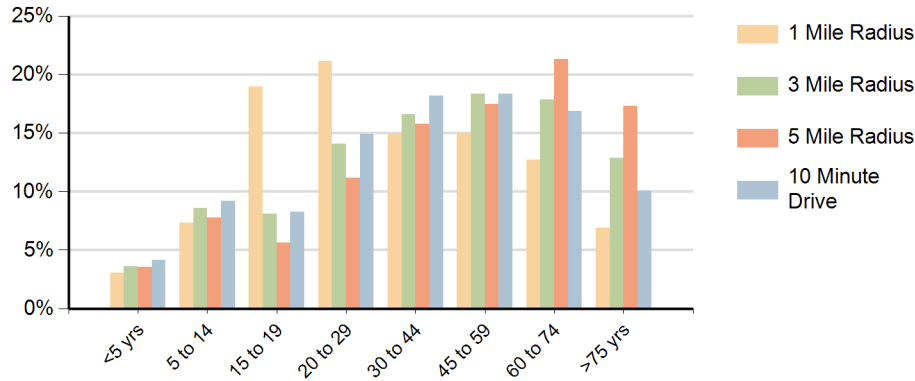
Daytime Population (10 Minute Drive)



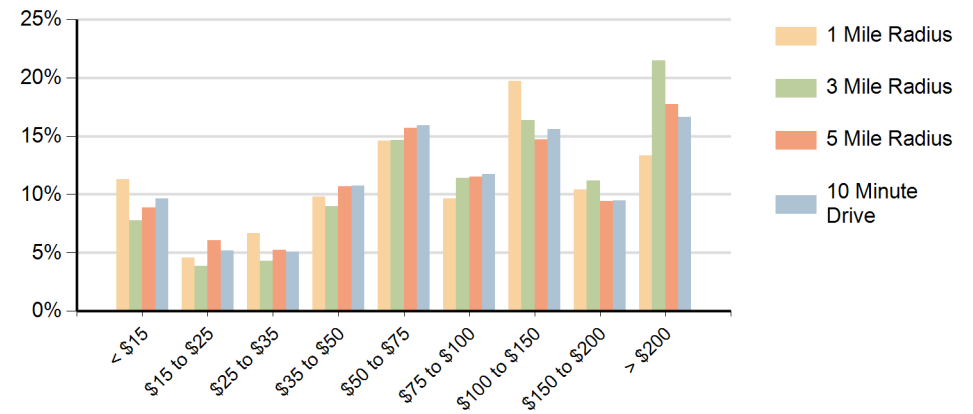
Race (10 Minute Drive)



## Population by Age Range



## Households by Income Range (\$000)



University Commons Boca Raton, Florida		1 Mile Radius	3 Mile Radius	5 Mile Radius	10 Minute Drive
Population	Current Estimated Population	10,486	100,038	247,147	98,650
	2020 Census Population	10,325	96,588	242,938	96,042
	2010 Census Population	8,550	83,714	213,752	82,537
	Historical Annual Growth 2010 to 2020	1.9%	1.4%	1.3%	1.5%
	Estimated Annual Growth 2020 to 2024	0.4%	0.8%	0.4%	0.6%
	Projected Annual Growth 2024 to 2029	0.0%	0.6%	0.3%	0.4%
Households	Current Estimated Households	3,047	42,272	113,993	40,493
	2020 Census Households	3,015	40,398	111,303	38,897
	2010 Census Households	3,024	36,896	101,247	34,969
	Historical Annual Growth 2010 to 2020	0.0%	0.9%	1.0%	1.1%
	Estimated Annual Growth 2020 to 2024	0.3%	1.1%	0.6%	1.0%
	Projected Annual Growth 2024 to 2029	0.2%	0.8%	0.5%	0.6%
Population per Household		2.5	2.2	2.1	2.3
Race	White	57.5%	69.4%	68.4%	61.4%
	Black or African American	14.2%	7.3%	8.9%	13.4%
	American Indian	0.5%	0.3%	0.2%	0.3%
	Asian	4.8%	3.9%	3.2%	3.6%
	Pacific Islander	0.1%	0.0%	0.0%	0.1%
	2 or More Races	16.2%	14.6%	14.2%	15.5%
	Other Races	6.8%	4.5%	5.0%	5.8%
	Hispanic Origin	22.6%	18.2%	17.1%	20.0%