

| Pinecrest Place Miami, Florida | 1 Mile Radius | 3 Mile Radius | 5 Mile Radius | 10 Minute Drive |
|-----------------------------------|---------------|---------------|---------------|-----------------|
|-----------------------------------|---------------|---------------|---------------|-----------------|

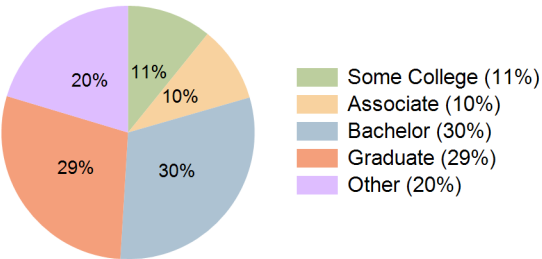
Current Year Demographics

| | | | | |
|--------------------------|-----------|-----------|-----------|-----------|
| Current Population | 12,149 | 98,527 | 281,287 | 96,063 |
| Total Daytime Pop | 17,022 | 135,424 | 308,349 | 142,838 |
| Daytime Workers | 11,310 | 90,929 | 174,201 | 98,648 |
| Average Household Income | \$194,321 | \$190,465 | \$169,812 | \$185,943 |
| Median Household Income | \$140,924 | \$116,724 | \$108,606 | \$114,803 |
| Total Households | 4,542 | 39,858 | 104,046 | 38,441 |
| Median Home Value | \$903,248 | \$796,557 | \$664,000 | \$786,949 |
| Bachelors Degree | 28.5% | 31.5% | 28.4% | 30.4% |
| Graduate Degree | 33.8% | 29.8% | 22.5% | 28.7% |
| Consumer Spending Index | 163 | 161 | 144 | 157 |

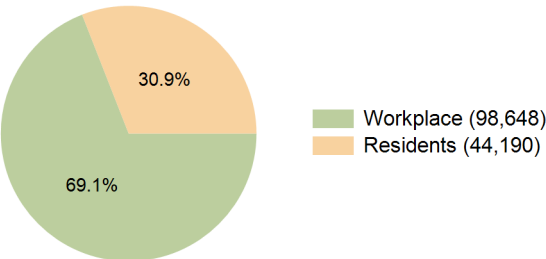
2030 Demographic Projections

| | | | | |
|---|--------|--------|---------|--------|
| Projected Population | 12,749 | 98,047 | 277,190 | 95,429 |
| Projected 5 Year Annual Growth Rate (Pop) | 1.0% | -0.1% | -0.3% | -0.1% |
| Projected Households | 4,862 | 40,213 | 103,835 | 38,713 |
| Projected 5 Year Annual Growth Rate (HH) | 1.4% | 0.2% | 0.0% | 0.1% |

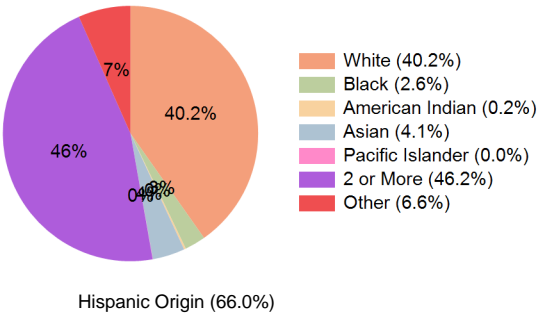
Education (10 Minute Drive)



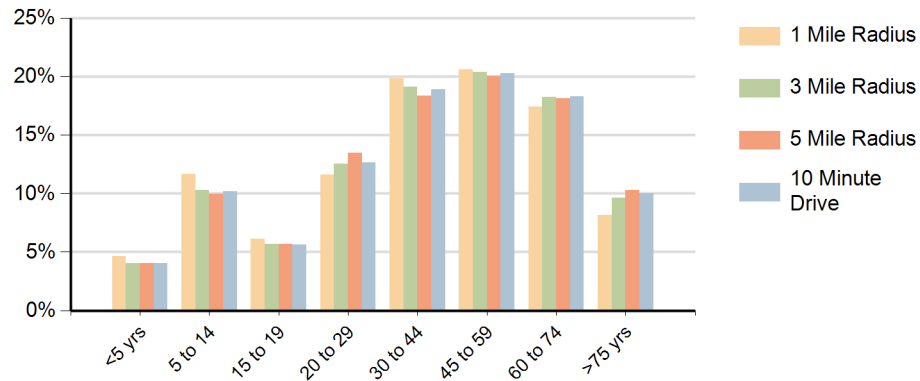
Daytime Population (10 Minute Drive)



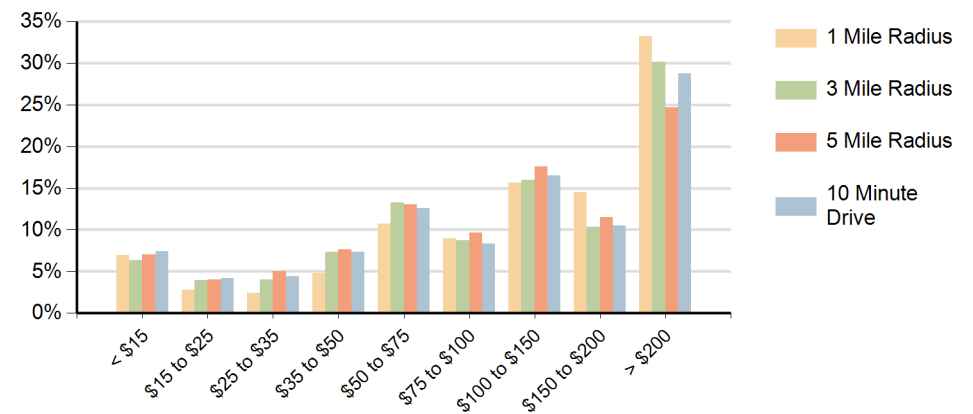
Race (10 Minute Drive)



Population by Age Range



Households by Income Range (\$000)



| Pinecrest Place Miami, Florida | | 1 Mile Radius | 3 Mile Radius | 5 Mile Radius | 10 Minute Drive |
|-----------------------------------|---------------------------------------|---------------|---------------|---------------|-----------------|
| Population | Current Estimated Population | 12,149 | 98,527 | 281,287 | 96,063 |
| | 2020 Census Population | 11,805 | 100,005 | 286,206 | 97,170 |
| | 2010 Census Population | 11,097 | 92,584 | 276,964 | 90,322 |
| | Historical Annual Growth 2010 to 2020 | 0.6% | 0.8% | 0.3% | 0.7% |
| | Estimated Annual Growth 2020 to 2025 | 0.6% | -0.3% | -0.3% | -0.2% |
| | Projected Annual Growth 2025 to 2030 | 1.0% | -0.1% | -0.3% | -0.1% |
| Households | Current Estimated Households | 4,542 | 39,858 | 104,046 | 38,441 |
| | 2020 Census Households | 4,338 | 39,579 | 103,392 | 38,046 |
| | 2010 Census Households | 4,137 | 35,483 | 97,222 | 34,089 |
| | Historical Annual Growth 2010 to 2020 | 0.5% | 1.1% | 0.6% | 1.1% |
| | Estimated Annual Growth 2020 to 2025 | 0.9% | 0.1% | 0.1% | 0.2% |
| | Projected Annual Growth 2025 to 2030 | 1.4% | 0.2% | 0.0% | 0.1% |
| Race | Population per Household | 2.7 | 2.5 | 2.6 | 2.5 |
| | White | 39.9% | 41.4% | 36.2% | 40.2% |
| | Black or African American | 2.5% | 2.4% | 6.3% | 2.6% |
| | American Indian | 0.3% | 0.2% | 0.2% | 0.2% |
| | Asian | 3.9% | 4.3% | 3.1% | 4.1% |
| | Pacific Islander | 0.0% | 0.0% | 0.0% | 0.0% |
| | 2 or More Races | 46.0% | 44.9% | 46.1% | 46.2% |
| | Other Races | 7.4% | 6.8% | 8.0% | 6.6% |
| Hispanic Origin | | 65.0% | 64.4% | 67.6% | 66.0% |