

The Crossing Clarendon  
Arlington, Virginia

1 Mile Radius

3 Mile Radius

5 Mile Radius

10 Minute Drive

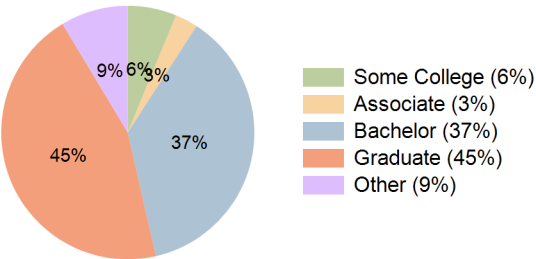
Current Year Demographics

Current Population	57,856	270,957	747,113	189,464
Total Daytime Pop	72,689	439,151	1,202,543	286,908
Daytime Workers	58,582	345,798	948,479	228,299
Average Household Income	\$188,494	\$192,518	\$187,553	\$190,614
Median Household Income	\$139,040	\$133,961	\$129,984	\$134,383
Total Households	29,851	123,690	350,964	90,216
Median Home Value	\$930,501	\$966,613	\$904,125	\$932,807
Bachelors Degree	38.4%	35.4%	33.3%	37.3%
Graduate Degree	46.1%	44.9%	45.0%	44.9%
Consumer Spending Index	165	168	164	166

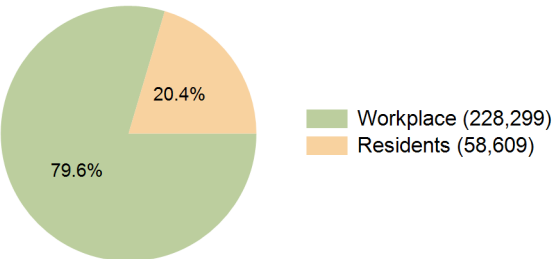
2029 Demographic Projections

Projected Population	61,016	279,712	780,902	199,532
Projected 5 Year Annual Growth Rate (Pop)	1.1%	0.6%	0.9%	1.0%
Projected Households	30,950	126,900	370,310	94,221
Projected 5 Year Annual Growth Rate (HH)	0.7%	0.5%	1.1%	0.9%

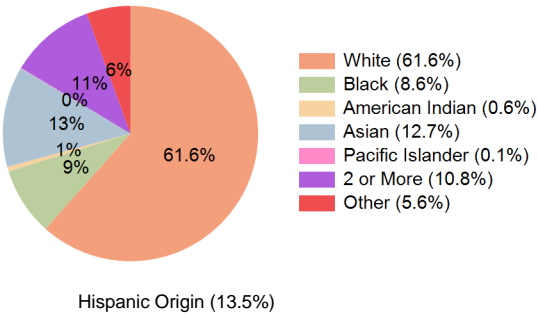
Education (10 Minute Drive)



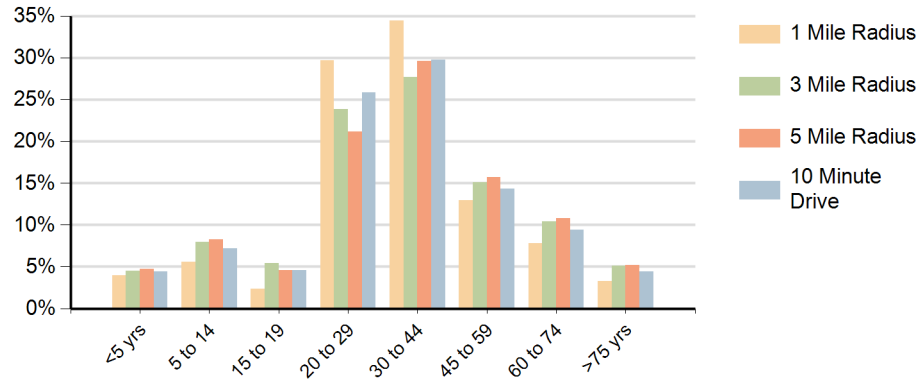
Daytime Population (10 Minute Drive)



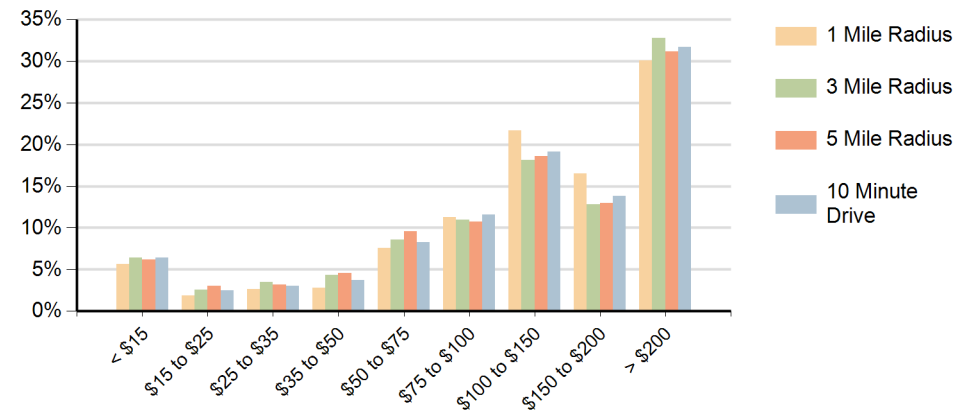
Race (10 Minute Drive)



### Population by Age Range



### Households by Income Range (\$000)



The Crossing Clarendon Arlington, Virginia		1 Mile Radius	3 Mile Radius	5 Mile Radius	10 Minute Drive
Population	Current Estimated Population	57,856	270,957	747,113	189,464
	2020 Census Population	52,424	261,729	733,377	178,537
	2010 Census Population	44,456	231,511	639,250	155,695
	Historical Annual Growth 2010 to 2020	1.7%	1.2%	1.4%	1.4%
	Estimated Annual Growth 2020 to 2024	2.4%	0.8%	0.4%	1.4%
	Projected Annual Growth 2024 to 2029	1.1%	0.6%	0.9%	1.0%
Households	Current Estimated Households	29,851	123,690	350,964	90,216
	2020 Census Households	27,289	119,533	342,101	85,337
	2010 Census Households	23,605	107,131	296,405	75,602
	Historical Annual Growth 2010 to 2020	1.5%	1.1%	1.4%	1.2%
	Estimated Annual Growth 2020 to 2024	2.1%	0.8%	0.6%	1.3%
	Projected Annual Growth 2024 to 2029	0.7%	0.5%	1.1%	0.9%
Race	Population per Household	1.9	2.1	2.1	2.0
	White	65.8%	59.9%	56.7%	61.6%
	Black or African American	6.3%	8.9%	13.4%	8.6%
	American Indian	0.3%	0.7%	0.7%	0.6%
	Asian	13.0%	12.5%	10.2%	12.7%
	Pacific Islander	0.1%	0.1%	0.1%	0.1%
	2 or More Races	10.0%	11.0%	11.0%	10.8%
	Other Races	4.6%	7.0%	7.9%	5.6%
Hispanic Origin		11.4%	15.5%	16.6%	13.5%