

Bloom on Third
Los Angeles, California

1 Mile Radius

3 Mile Radius

5 Mile Radius

10 Minute Drive

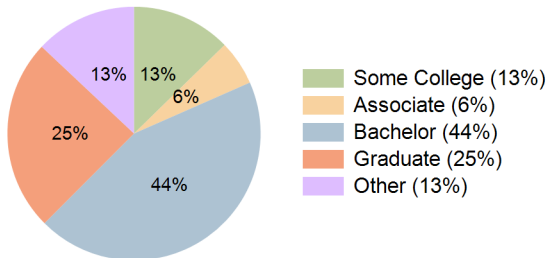
Current Year Demographics

Current Population	46,134	363,628	945,960	147,616
Total Daytime Pop	73,599	474,765	1,105,503	213,437
Daytime Workers	54,621	317,775	672,754	155,013
Average Household Income	\$159,852	\$138,765	\$123,638	\$152,001
Median Household Income	\$107,845	\$89,065	\$78,152	\$101,508
Total Households	24,419	180,130	431,895	81,485
Median Home Value	\$1,734,899	\$1,511,170	\$1,399,087	\$1,557,643
Bachelors Degree	47.5%	38.1%	33.1%	44.1%
Graduate Degree	25.6%	20.6%	18.3%	24.5%
Consumer Spending Index	139	121	109	132

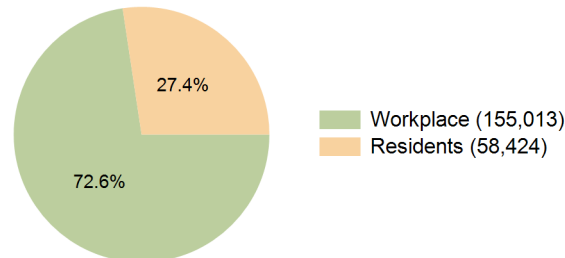
2029 Demographic Projections

Projected Population	46,250	363,390	951,744	148,620
Projected 5 Year Annual Growth Rate (Pop)	0.1%	0.0%	0.1%	0.1%
Projected Households	25,167	185,418	448,181	84,143
Projected 5 Year Annual Growth Rate (HH)	0.6%	0.6%	0.7%	0.6%

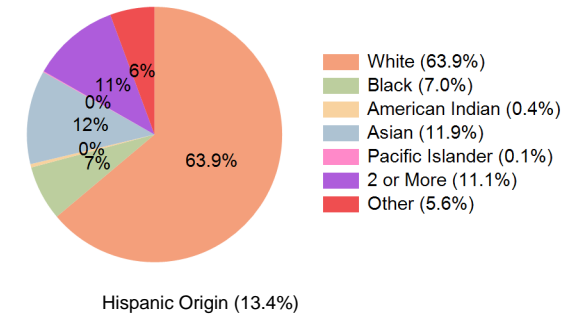
Education (10 Minute Drive)



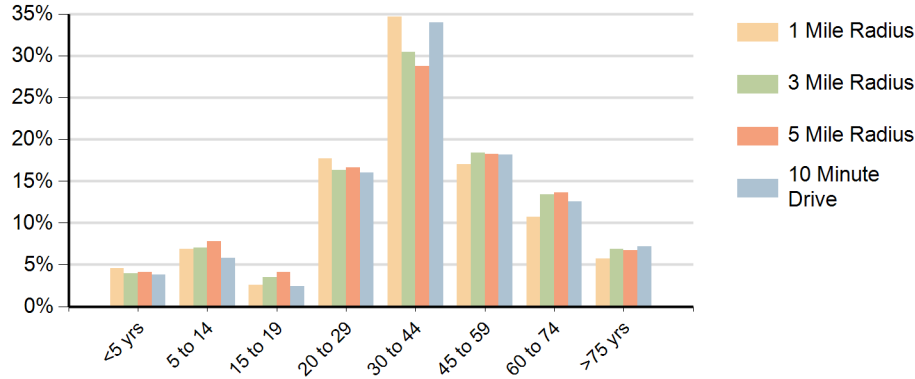
Daytime Population (10 Minute Drive)



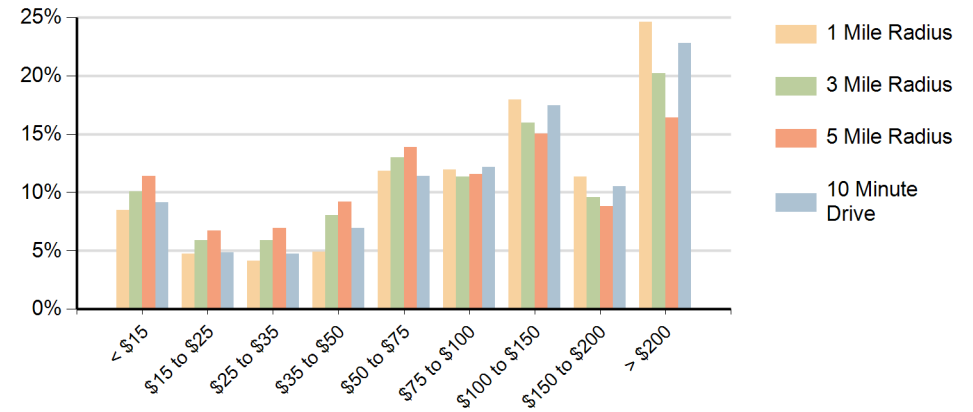
Race (10 Minute Drive)



Population by Age Range



Households by Income Range (\$000)



Bloom on Third Los Angeles, California		1 Mile Radius	3 Mile Radius	5 Mile Radius	10 Minute Drive
Population	Current Estimated Population	46,134	363,628	945,960	147,616
	2020 Census Population	46,879	368,617	956,453	150,867
	2010 Census Population	44,559	364,309	955,797	144,353
	Historical Annual Growth 2010 to 2020	0.5%	0.1%	0.0%	0.4%
	Estimated Annual Growth 2020 to 2024	-0.4%	-0.3%	-0.3%	-0.5%
	Projected Annual Growth 2024 to 2029	0.1%	0.0%	0.1%	0.1%
Households	Current Estimated Households	24,419	180,130	431,895	81,485
	2020 Census Households	24,212	177,227	423,758	80,879
	2010 Census Households	23,183	170,195	405,208	77,527
	Historical Annual Growth 2010 to 2020	0.4%	0.4%	0.5%	0.4%
	Estimated Annual Growth 2020 to 2024	0.2%	0.4%	0.5%	0.2%
	Projected Annual Growth 2024 to 2029	0.6%	0.6%	0.7%	0.6%
Population per Household		1.9	2.0	2.2	1.8
Race	White	62.4%	50.1%	37.9%	63.9%
	Black or African American	5.8%	8.4%	9.9%	7.0%
	American Indian	0.4%	1.1%	1.6%	0.4%
	Asian	16.2%	13.4%	16.2%	11.9%
	Pacific Islander	0.1%	0.1%	0.1%	0.1%
	2 or More Races	10.7%	11.6%	11.7%	11.1%
	Other Races	4.4%	15.3%	22.6%	5.6%
	Hispanic Origin	11.9%	25.9%	35.2%	13.4%