

Hewlett Crossing  
Hewlett, New York

1 Mile Radius

3 Mile Radius

5 Mile Radius

10 Minute Drive

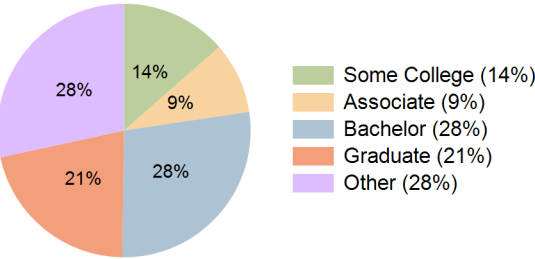
Current Year Demographics

Current Population	22,835	188,355	588,216	131,403
Total Daytime Pop	20,093	160,119	473,833	117,788
Daytime Workers	8,399	65,206	176,570	51,359
Average Household Income	\$203,276	\$169,453	\$153,588	\$173,643
Median Household Income	\$157,207	\$132,446	\$120,213	\$133,908
Total Households	7,267	61,817	196,595	43,337
Median Home Value	\$774,905	\$688,498	\$673,344	\$706,441
Bachelors Degree	30.7%	26.2%	23.4%	27.6%
Graduate Degree	29.3%	19.9%	17.3%	21.4%
Consumer Spending Index	168	142	130	145

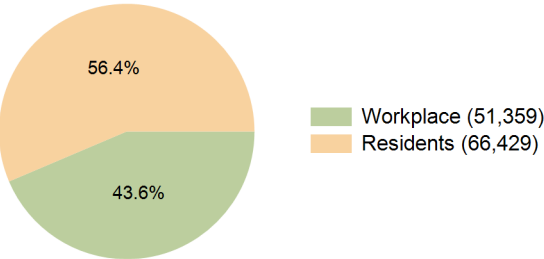
2030 Demographic Projections

Projected Population	22,594	187,094	585,090	130,683
Projected 5 Year Annual Growth Rate (Pop)	-0.2%	-0.1%	-0.1%	-0.1%
Projected Households	7,239	61,958	197,323	43,510
Projected 5 Year Annual Growth Rate (HH)	-0.1%	0.1%	0.1%	0.1%

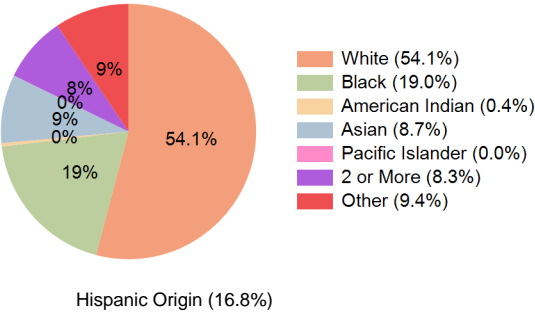
Education (10 Minute Drive)



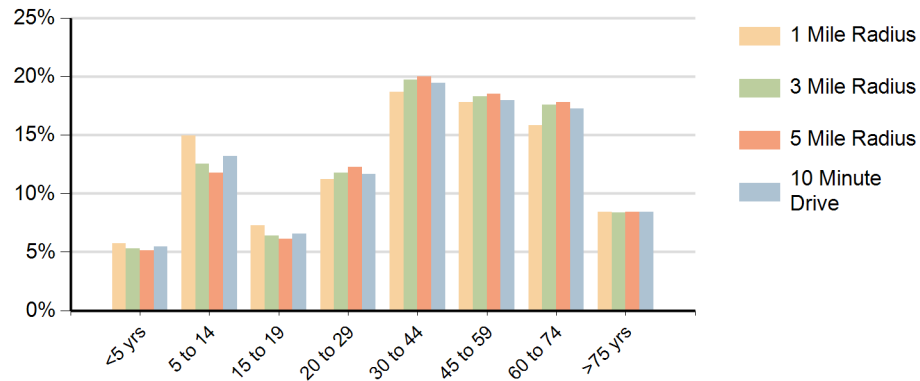
Daytime Population (10 Minute Drive)



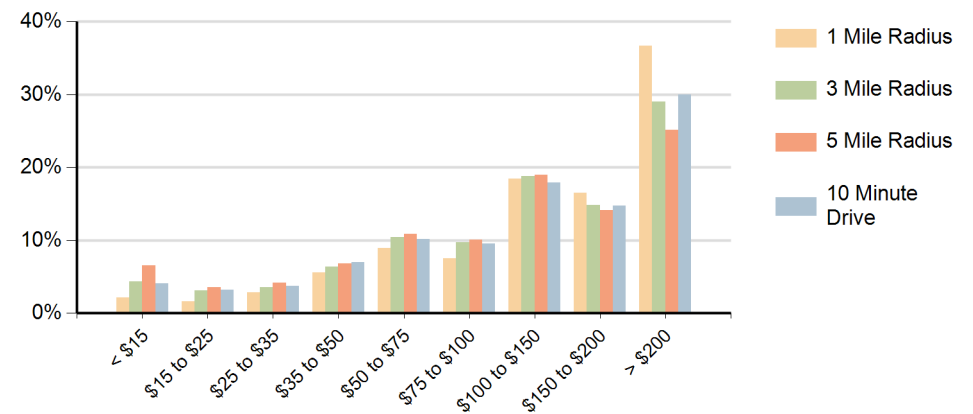
Race (10 Minute Drive)



### Population by Age Range



### Households by Income Range (\$000)



Hewlett Crossing Hewlett, New York		1 Mile Radius	3 Mile Radius	5 Mile Radius	10 Minute Drive
Population	Current Estimated Population	22,835	188,355	588,216	131,403
	2020 Census Population	23,220	190,644	593,290	132,853
	2010 Census Population	21,179	177,784	552,091	123,639
	Historical Annual Growth 2010 to 2020	0.9%	0.7%	0.7%	0.7%
	Estimated Annual Growth 2020 to 2025	-0.3%	-0.2%	-0.2%	-0.2%
	Projected Annual Growth 2025 to 2030	-0.2%	-0.1%	-0.1%	-0.1%
Households	Current Estimated Households	7,267	61,817	196,595	43,337
	2020 Census Households	7,300	61,680	195,578	43,167
	2010 Census Households	7,170	60,116	187,226	42,231
	Historical Annual Growth 2010 to 2020	0.2%	0.3%	0.4%	0.2%
	Estimated Annual Growth 2020 to 2025	-0.1%	0.0%	0.1%	0.1%
	Projected Annual Growth 2025 to 2030	-0.1%	0.1%	0.1%	0.1%
Race	Population per Household	3.1	3.0	2.9	3.0
	White	67.2%	47.6%	37.1%	54.1%
	Black or African American	7.9%	24.1%	37.1%	19.0%
	American Indian	0.3%	0.5%	0.6%	0.4%
	Asian	9.9%	9.1%	6.8%	8.7%
	Pacific Islander	0.1%	0.0%	0.1%	0.0%
	2 or More Races	7.1%	8.7%	8.7%	8.3%
	Other Races	7.5%	10.0%	9.7%	9.4%
Hispanic Origin		14.3%	17.5%	17.1%	16.8%