

District at Metuchen
Metuchen, New Jersey

1 Mile Radius

3 Mile Radius

5 Mile Radius

10 Minute Drive

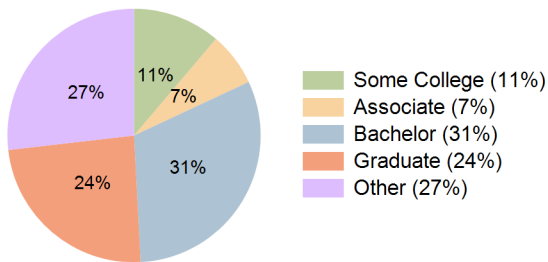
Current Year Demographics

Current Population	14,151	114,613	293,125	127,846
Total Daytime Pop	15,507	136,184	314,653	153,398
Daytime Workers	9,286	82,404	171,406	92,684
Average Household Income	\$202,206	\$165,163	\$151,699	\$160,275
Median Household Income	\$153,402	\$119,932	\$111,437	\$117,748
Total Households	5,394	40,741	101,745	44,992
Median Home Value	\$598,684	\$521,593	\$490,906	\$507,877
Bachelors Degree	34.7%	32.4%	28.8%	31.1%
Graduate Degree	30.6%	25.5%	23.2%	24.0%
Consumer Spending Index	172	143	132	139

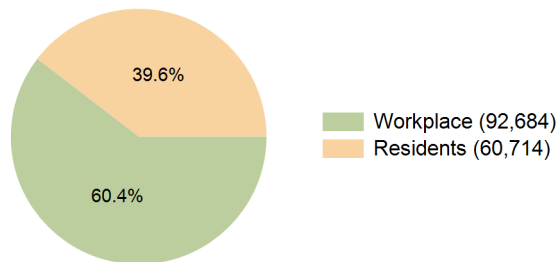
2029 Demographic Projections

Projected Population	14,625	115,496	293,865	128,648
Projected 5 Year Annual Growth Rate (Pop)	0.7%	0.2%	0.1%	0.1%
Projected Households	5,609	41,765	103,919	46,083
Projected 5 Year Annual Growth Rate (HH)	0.8%	0.5%	0.4%	0.5%

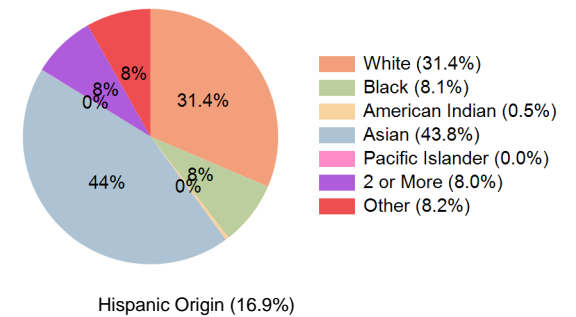
Education (10 Minute Drive)



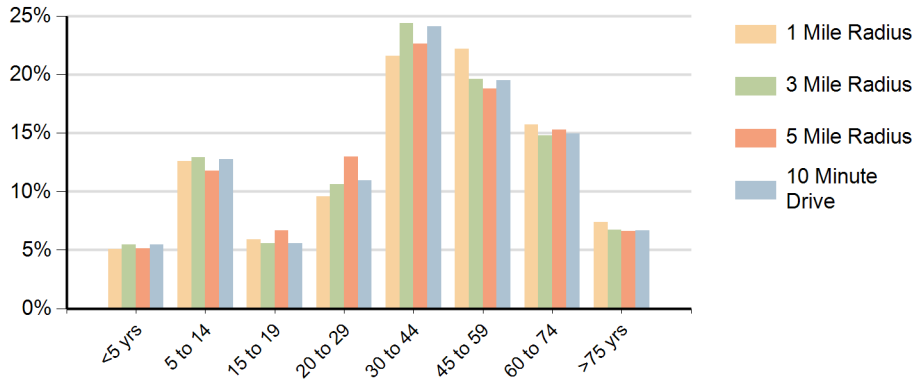
Daytime Population (10 Minute Drive)



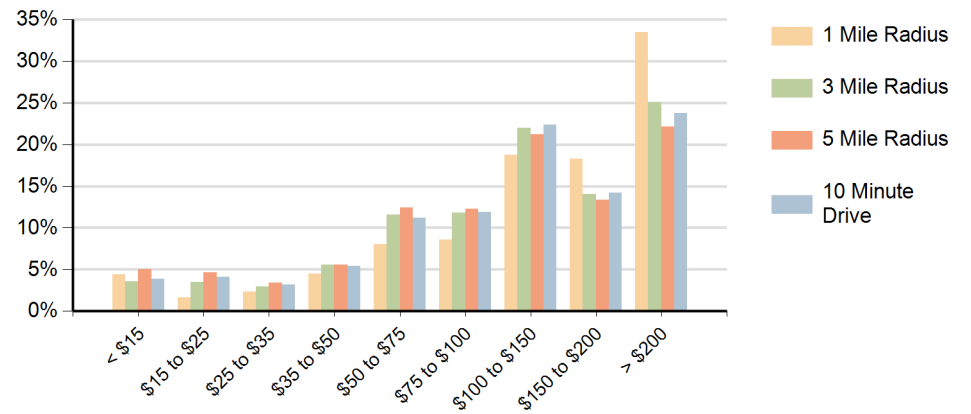
Race (10 Minute Drive)



Population by Age Range



Households by Income Range (\$000)



District at Metuchen Metuchen, New Jersey		1 Mile Radius	3 Mile Radius	5 Mile Radius	10 Minute Drive
Population	Current Estimated Population	14,151	114,613	293,125	127,846
	2020 Census Population	14,350	114,760	290,874	128,202
	2010 Census Population	13,081	106,062	272,364	118,476
	Historical Annual Growth 2010 to 2020	0.9%	0.8%	0.7%	0.8%
	Estimated Annual Growth 2020 to 2024	-0.3%	0.0%	0.2%	-0.1%
	Projected Annual Growth 2024 to 2029	0.7%	0.2%	0.1%	0.1%
Households	Current Estimated Households	5,394	40,741	101,745	44,992
	2020 Census Households	5,449	40,311	99,797	44,547
	2010 Census Households	4,946	37,809	94,677	41,841
	Historical Annual Growth 2010 to 2020	1.0%	0.6%	0.5%	0.6%
	Estimated Annual Growth 2020 to 2024	-0.2%	0.3%	0.5%	0.2%
	Projected Annual Growth 2024 to 2029	0.8%	0.5%	0.4%	0.5%
Population per Household		2.6	2.8	2.8	2.8
Race	White	57.4%	30.8%	33.7%	31.4%
	Black or African American	5.5%	8.0%	10.1%	8.1%
	American Indian	0.3%	0.4%	0.5%	0.5%
	Asian	23.1%	48.4%	37.4%	43.8%
	Pacific Islander	0.0%	0.0%	0.1%	0.0%
	2 or More Races	10.2%	7.0%	8.6%	8.0%
	Other Races	3.6%	5.4%	9.7%	8.2%
	Hispanic Origin	11.3%	12.2%	19.4%	16.9%