

Ridgewood Shopping Center Raleigh, North Carolina

1 Mile Radius

3 Mile Radius

5 Mile Radius

10 Minute Drive

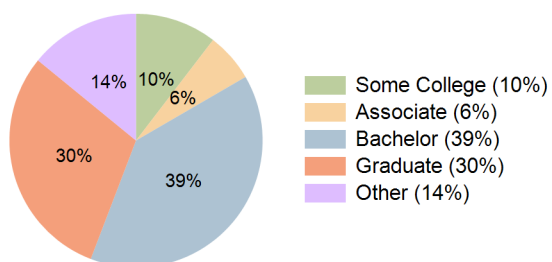
Current Year Demographics

Current Population	8,420	97,717	226,422	128,625
Total Daytime Pop	10,701	152,859	338,253	212,564
Daytime Workers	6,613	110,970	243,938	160,165
Average Household Income	\$155,769	\$147,303	\$134,728	\$139,916
Median Household Income	\$105,281	\$93,510	\$89,418	\$91,193
Total Households	3,336	45,517	104,903	61,642
Median Home Value	\$840,338	\$741,731	\$581,303	\$667,927
Bachelors Degree	35.8%	40.4%	37.3%	39.2%
Graduate Degree	37.9%	31.4%	25.8%	30.1%
Consumer Spending Index	133	127	116	121

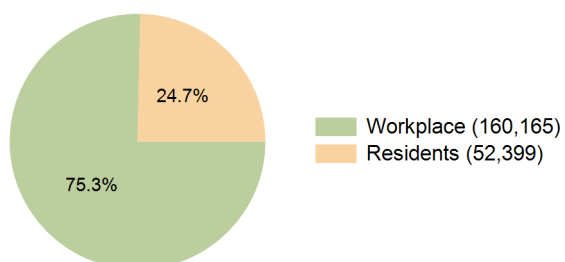
2030 Demographic Projections

Projected Population	8,436	106,473	248,635	139,705
Projected 5 Year Annual Growth Rate (Pop)	0.0%	1.7%	1.9%	1.7%
Projected Households	3,373	50,879	117,834	68,608
Projected 5 Year Annual Growth Rate (HH)	0.2%	2.3%	2.4%	2.2%

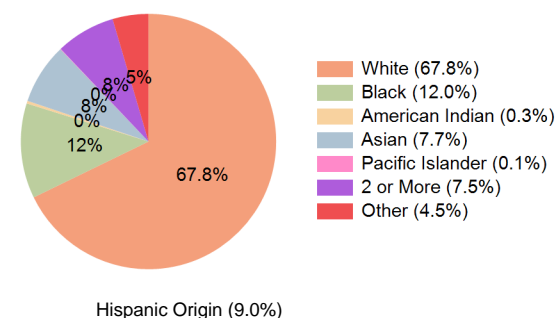
Education (10 Minute Drive)



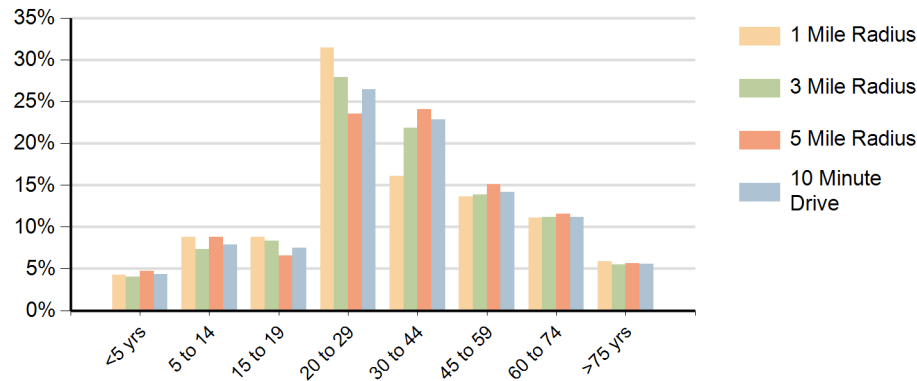
Daytime Population (10 Minute Drive)



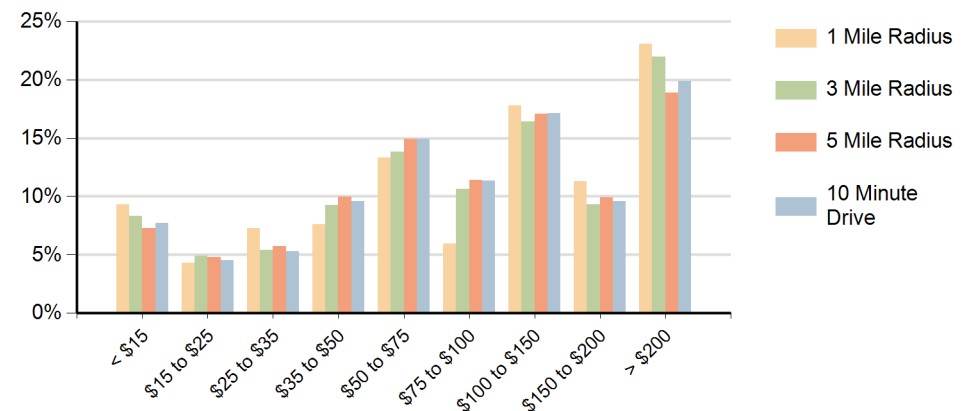
Race (10 Minute Drive)



Population by Age Range



Households by Income Range (\$000)



Ridgewood Shopping Center Raleigh, North Carolina		1 Mile Radius	3 Mile Radius	5 Mile Radius	10 Minute Drive
Population	Current Estimated Population	8,420	97,717	226,422	128,625
	2020 Census Population	8,744	93,502	219,388	122,469
	2010 Census Population	8,119	78,099	192,275	103,876
	Historical Annual Growth 2010 to 2020	0.7%	1.8%	1.3%	1.7%
	Estimated Annual Growth 2020 to 2025	-0.7%	0.8%	0.6%	0.9%
	Projected Annual Growth 2025 to 2030	0.0%	1.7%	1.9%	1.7%
Households	Current Estimated Households	3,336	45,517	104,903	61,642
	2020 Census Households	3,252	40,640	96,288	55,422
	2010 Census Households	2,676	31,524	79,350	43,541
	Historical Annual Growth 2010 to 2020	2.0%	2.6%	2.0%	2.4%
	Estimated Annual Growth 2020 to 2025	0.5%	2.2%	1.7%	2.1%
	Projected Annual Growth 2025 to 2030	0.2%	2.3%	2.4%	2.2%
Race	Population per Household	2.1	2.0	2.0	2.0
	White	80.9%	70.6%	62.8%	67.8%
	Black or African American	6.2%	11.2%	17.1%	12.0%
	American Indian	0.3%	0.3%	0.4%	0.3%
	Asian	5.1%	7.5%	6.3%	7.7%
	Pacific Islander	0.0%	0.1%	0.1%	0.1%
	2 or More Races	5.4%	6.9%	7.5%	7.5%
	Other Races	2.1%	3.4%	5.8%	4.5%
Hispanic Origin		5.3%	7.3%	10.7%	9.0%