

Country Walk Plaza
Miami, Florida

1 Mile Radius

3 Mile Radius

5 Mile Radius

10 Minute Drive

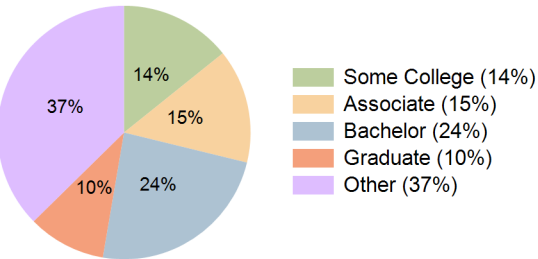
Current Year Demographics

Current Population	18,747	121,341	319,265	96,057
Total Daytime Pop	16,474	110,339	272,596	91,796
Daytime Workers	7,537	51,646	118,346	45,769
Average Household Income	\$121,605	\$118,625	\$110,388	\$119,646
Median Household Income	\$96,464	\$98,321	\$85,720	\$98,748
Total Households	5,901	38,213	107,688	29,863
Median Home Value	\$454,916	\$465,189	\$463,748	\$466,821
Bachelors Degree	22.6%	24.0%	24.4%	23.9%
Graduate Degree	10.7%	10.4%	10.9%	10.0%
Consumer Spending Index	107	104	97	105

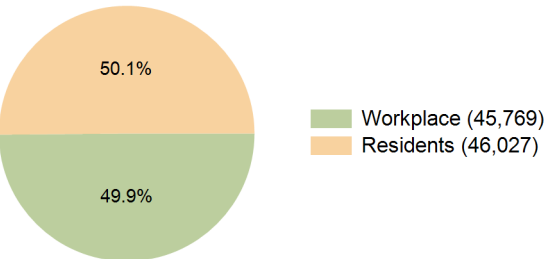
2029 Demographic Projections

Projected Population	18,179	117,887	313,878	93,622
Projected 5 Year Annual Growth Rate (Pop)	-0.6%	-0.6%	-0.3%	-0.5%
Projected Households	5,796	37,960	108,220	29,781
Projected 5 Year Annual Growth Rate (HH)	-0.4%	-0.1%	0.1%	-0.1%

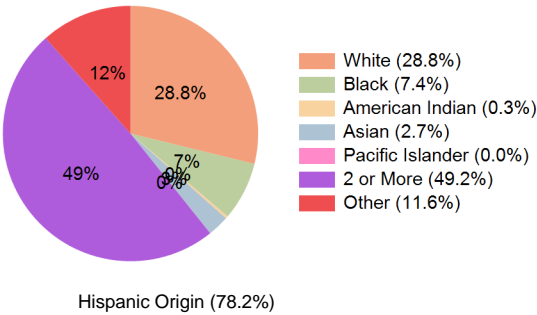
Education (10 Minute Drive)



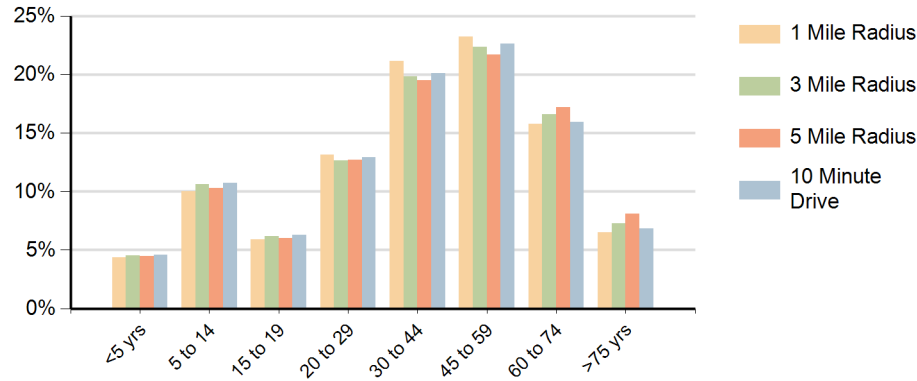
Daytime Population (10 Minute Drive)



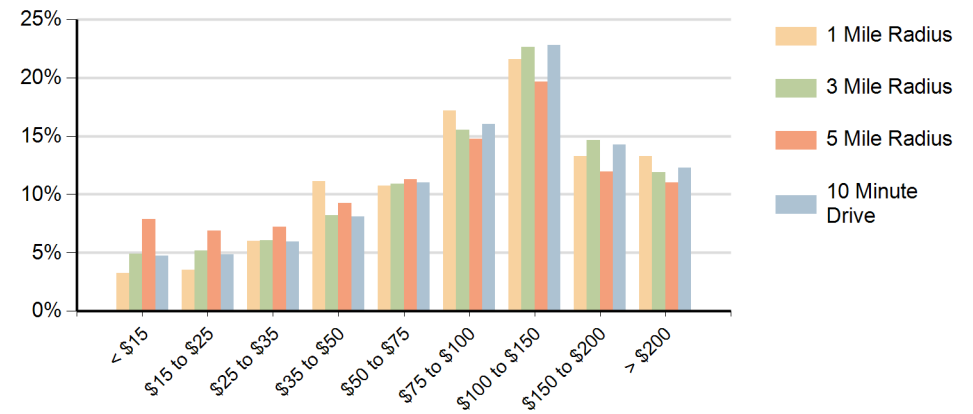
Race (10 Minute Drive)



Population by Age Range



Households by Income Range (\$000)



Country Walk Plaza Miami, Florida		1 Mile Radius	3 Mile Radius	5 Mile Radius	10 Minute Drive
Population	Current Estimated Population	18,747	121,341	319,265	96,057
	2020 Census Population	19,475	121,476	322,713	95,285
	2010 Census Population	17,348	112,286	301,066	87,925
	Historical Annual Growth 2010 to 2020	1.2%	0.8%	0.7%	0.8%
	Estimated Annual Growth 2020 to 2024	-0.9%	0.0%	-0.3%	0.2%
	Projected Annual Growth 2024 to 2029	-0.6%	-0.6%	-0.3%	-0.5%
Households	Current Estimated Households	5,901	38,213	107,688	29,863
	2020 Census Households	5,982	37,450	106,782	28,968
	2010 Census Households	5,013	33,432	96,643	25,824
	Historical Annual Growth 2010 to 2020	1.8%	1.1%	1.0%	1.2%
	Estimated Annual Growth 2020 to 2024	-0.3%	0.5%	0.2%	0.7%
	Projected Annual Growth 2024 to 2029	-0.4%	-0.1%	0.1%	-0.1%
Race	Population per Household	3.1	3.1	2.9	3.2
	White	31.1%	28.7%	28.2%	28.8%
	Black or African American	5.9%	8.6%	9.4%	7.4%
	American Indian	0.2%	0.3%	0.3%	0.3%
	Asian	2.3%	2.7%	2.4%	2.7%
	Pacific Islander	0.0%	0.0%	0.0%	0.0%
	2 or More Races	48.4%	48.6%	48.3%	49.2%
	Other Races	12.1%	11.2%	11.4%	11.6%
Hispanic Origin		80.0%	76.7%	75.7%	78.2%