

The Meadows East Meadow, New York	1 Mile Radius	3 Mile Radius	5 Mile Radius	10 Minute Drive
--------------------------------------	---------------	---------------	---------------	-----------------

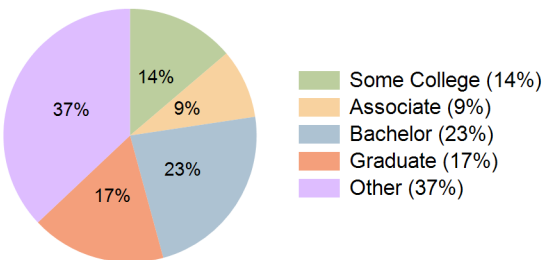
Current Year Demographics

Current Population	18,443	210,253	524,390	220,892
Total Daytime Pop	16,554	191,052	492,304	210,093
Daytime Workers	7,275	86,582	238,157	100,724
Average Household Income	\$159,657	\$165,568	\$177,104	\$169,224
Median Household Income	\$119,813	\$127,077	\$132,902	\$128,375
Total Households	6,013	61,632	161,395	65,392
Median Home Value	\$625,877	\$616,929	\$638,411	\$627,545
Bachelors Degree	24.3%	22.0%	24.4%	23.1%
Graduate Degree	19.5%	16.5%	18.7%	17.2%
Consumer Spending Index	137	143	152	146

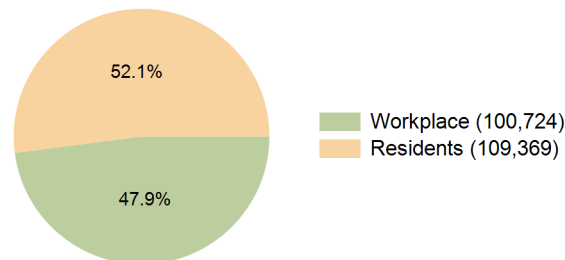
2029 Demographic Projections

Projected Population	18,445	210,652	526,097	221,958
Projected 5 Year Annual Growth Rate (Pop)	0.0%	0.0%	0.1%	0.1%
Projected Households	6,002	61,587	161,472	65,542
Projected 5 Year Annual Growth Rate (HH)	0.0%	0.0%	0.0%	0.1%

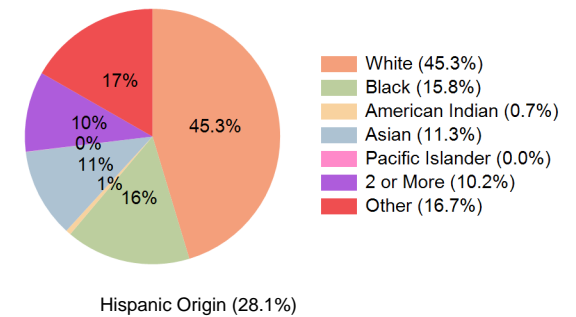
Education (10 Minute Drive)



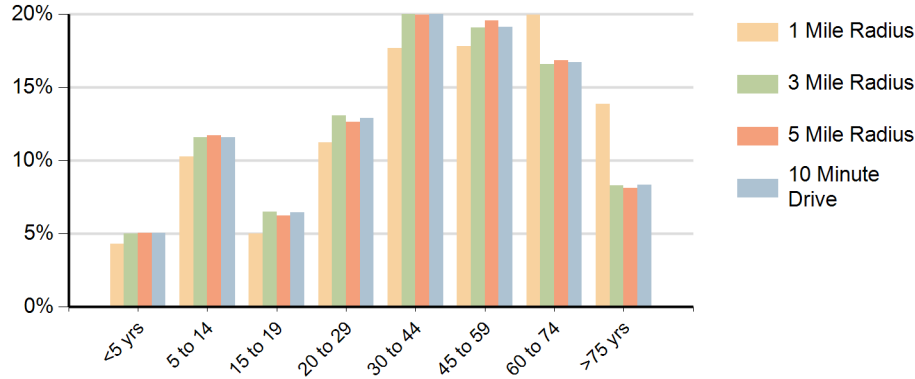
Daytime Population (10 Minute Drive)



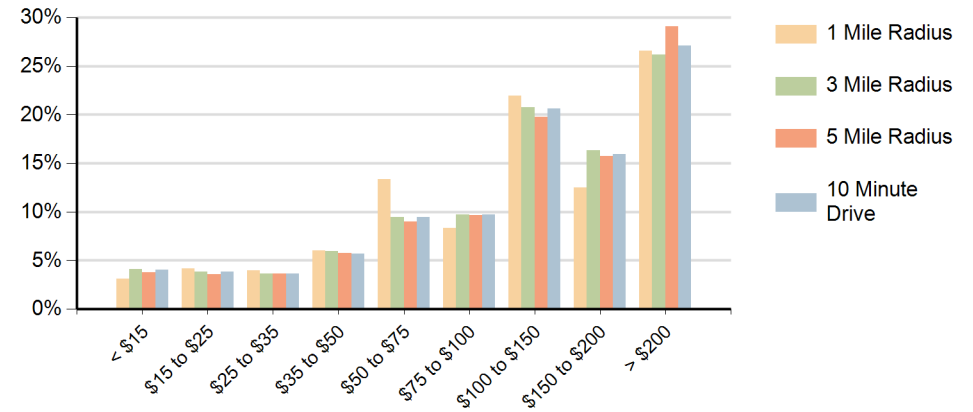
Race (10 Minute Drive)



Population by Age Range



Households by Income Range (\$000)



The Meadows East Meadow, New York		1 Mile Radius	3 Mile Radius	5 Mile Radius	10 Minute Drive
Population	Current Estimated Population	18,443	210,253	524,390	220,892
	2020 Census Population	18,478	210,005	525,958	220,620
	2010 Census Population	18,603	203,427	506,270	213,968
	Historical Annual Growth 2010 to 2020	-0.1%	0.3%	0.4%	0.3%
	Estimated Annual Growth 2020 to 2024	0.0%	0.0%	-0.1%	0.0%
	Projected Annual Growth 2024 to 2029	0.0%	0.0%	0.1%	0.1%
Households	Current Estimated Households	6,013	61,632	161,395	65,392
	2020 Census Households	6,044	61,926	162,369	65,688
	2010 Census Households	5,917	60,960	159,459	64,714
	Historical Annual Growth 2010 to 2020	0.2%	0.2%	0.2%	0.2%
	Estimated Annual Growth 2020 to 2024	-0.1%	-0.1%	-0.1%	-0.1%
	Projected Annual Growth 2024 to 2029	0.0%	0.0%	0.0%	0.1%
	Population per Household	2.9	3.3	3.2	3.3
Race	White	57.3%	43.8%	48.2%	45.3%
	Black or African American	5.9%	16.2%	15.1%	15.8%
	American Indian	0.3%	0.7%	0.6%	0.7%
	Asian	19.6%	11.6%	11.5%	11.3%
	Pacific Islander	0.1%	0.0%	0.0%	0.0%
	2 or More Races	8.2%	10.2%	9.7%	10.2%
	Other Races	8.6%	17.5%	14.9%	16.7%
	Hispanic Origin	17.8%	29.0%	25.4%	28.1%