

Wading River
Wading River, New York

1 Mile Radius

3 Mile Radius

5 Mile Radius

10 Minute Drive

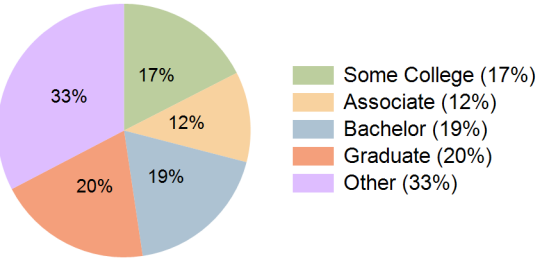
Current Year Demographics

Current Population	3,130	15,959	35,535	29,051
Total Daytime Pop	2,814	12,714	27,364	22,633
Daytime Workers	1,296	4,913	9,337	7,653
Average Household Income	\$166,563	\$167,226	\$141,813	\$142,859
Median Household Income	\$134,650	\$137,436	\$110,447	\$110,324
Total Households	1,105	5,873	14,152	11,557
Median Home Value	\$655,890	\$623,559	\$559,027	\$566,260
Bachelors Degree	16.0%	19.1%	19.2%	18.6%
Graduate Degree	30.9%	24.0%	19.9%	19.7%
Consumer Spending Index	138	140	120	121

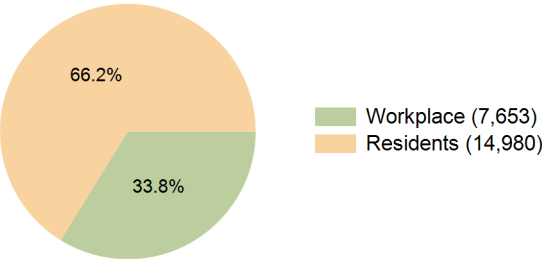
2030 Demographic Projections

Projected Population	3,115	15,884	35,363	28,912
Projected 5 Year Annual Growth Rate (Pop)	-0.1%	-0.1%	-0.1%	-0.1%
Projected Households	1,109	5,894	14,192	11,595
Projected 5 Year Annual Growth Rate (HH)	0.1%	0.1%	0.1%	0.1%

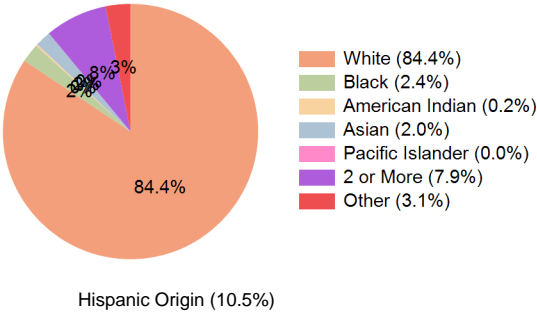
Education (10 Minute Drive)



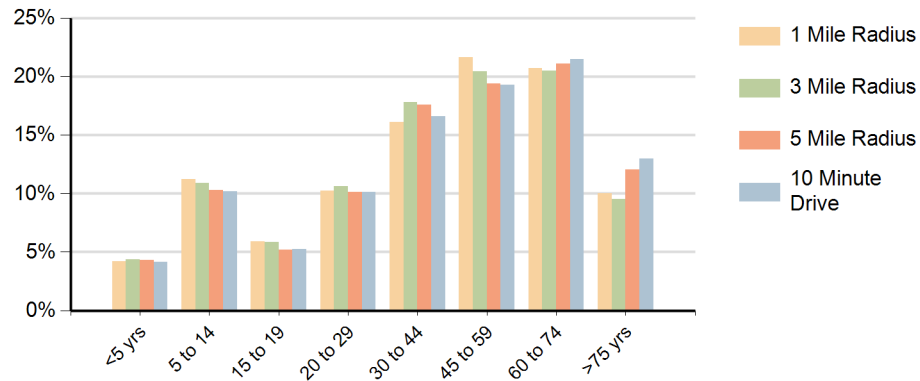
Daytime Population (10 Minute Drive)



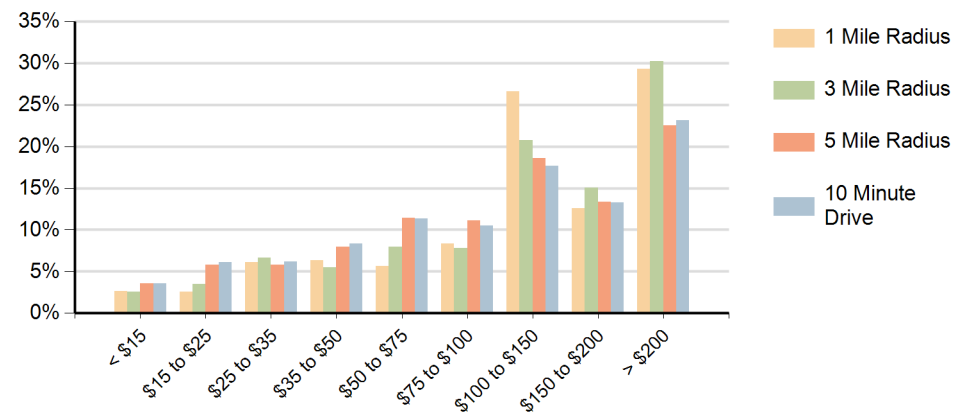
Race (10 Minute Drive)



Population by Age Range



Households by Income Range (\$000)



Wading River Wading River, New York		1 Mile Radius	3 Mile Radius	5 Mile Radius	10 Minute Drive
Population	Current Estimated Population	3,130	15,959	35,535	29,051
	2020 Census Population	3,261	16,010	36,052	29,631
	2010 Census Population	3,423	15,739	35,834	29,481
	Historical Annual Growth 2010 to 2020	-0.5%	0.2%	0.1%	0.1%
	Estimated Annual Growth 2020 to 2025	-0.8%	-0.1%	-0.3%	-0.4%
	Projected Annual Growth 2025 to 2030	-0.1%	-0.1%	-0.1%	-0.1%
Households	Current Estimated Households	1,105	5,873	14,152	11,557
	2020 Census Households	1,095	5,834	14,071	11,492
	2010 Census Households	1,130	5,630	13,626	11,138
	Historical Annual Growth 2010 to 2020	-0.3%	0.4%	0.3%	0.3%
	Estimated Annual Growth 2020 to 2025	0.2%	0.1%	0.1%	0.1%
	Projected Annual Growth 2025 to 2030	0.1%	0.1%	0.1%	0.1%
Race	Population per Household	2.8	2.7	2.5	2.5
	White	86.9%	83.9%	83.5%	84.4%
	Black or African American	1.4%	2.3%	2.5%	2.4%
	American Indian	0.2%	0.2%	0.2%	0.2%
	Asian	2.3%	2.3%	2.4%	2.0%
	Pacific Islander	0.0%	0.0%	0.0%	0.0%
	2 or More Races	6.7%	8.3%	8.0%	7.9%
	Other Races	2.4%	3.0%	3.4%	3.1%
Hispanic Origin		8.6%	10.3%	10.9%	10.5%