

The Shops at SunVet
Holbrook, New York

1 Mile Radius

3 Mile Radius

5 Mile Radius

10 Minute Drive

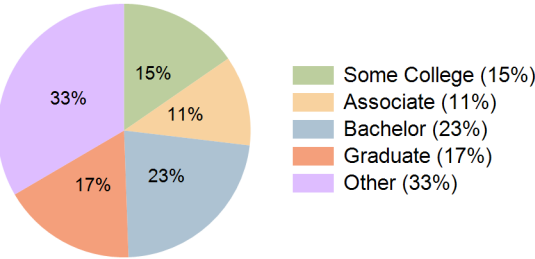
Current Year Demographics

Current Population	9,244	81,420	170,355	112,850
Total Daytime Pop	9,099	80,439	165,101	112,859
Daytime Workers	4,813	43,267	84,190	60,306
Average Household Income	\$159,276	\$159,085	\$154,804	\$156,054
Median Household Income	\$124,466	\$119,900	\$118,492	\$118,990
Total Households	3,521	30,778	62,351	41,386
Median Home Value	\$605,335	\$589,380	\$563,746	\$571,346
Bachelors Degree	22.1%	24.0%	21.6%	22.6%
Graduate Degree	18.9%	18.8%	16.5%	17.2%
Consumer Spending Index	138	138	134	135

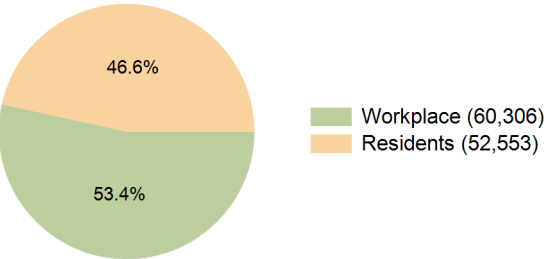
2029 Demographic Projections

Projected Population	9,093	80,254	170,078	112,640
Projected 5 Year Annual Growth Rate (Pop)	-0.3%	-0.3%	0.0%	0.0%
Projected Households	3,494	30,637	62,830	41,669
Projected 5 Year Annual Growth Rate (HH)	-0.2%	-0.1%	0.2%	0.1%

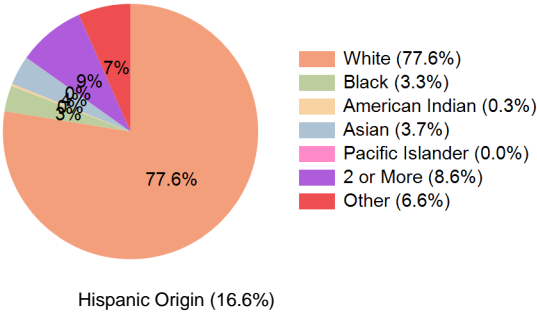
Education (10 Minute Drive)



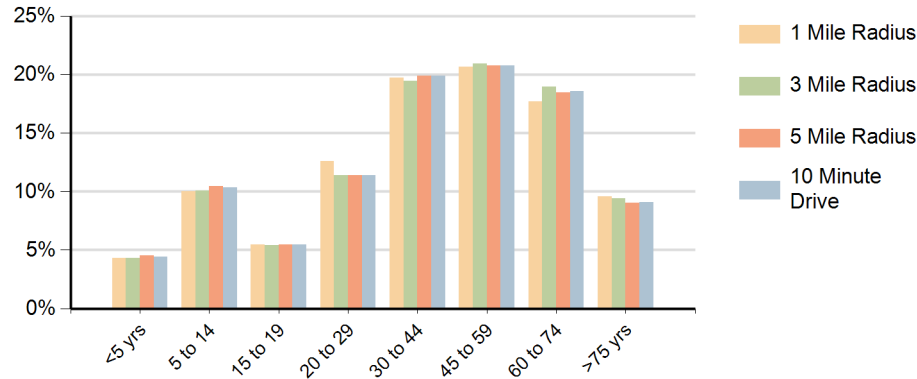
Daytime Population (10 Minute Drive)



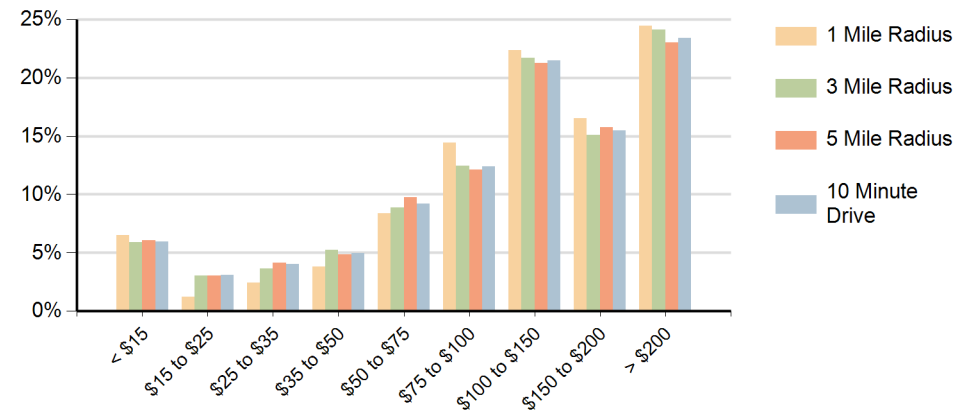
Race (10 Minute Drive)



Population by Age Range



Households by Income Range (\$000)



The Shops at SunVet Holbrook, New York		1 Mile Radius	3 Mile Radius	5 Mile Radius	10 Minute Drive
Population	Current Estimated Population	9,244	81,420	170,355	112,850
	2020 Census Population	9,296	81,543	170,435	113,105
	2010 Census Population	9,490	82,975	173,945	115,594
	Historical Annual Growth 2010 to 2020	-0.2%	-0.2%	-0.2%	-0.2%
	Estimated Annual Growth 2020 to 2024	-0.1%	0.0%	0.0%	-0.1%
	Projected Annual Growth 2024 to 2029	-0.3%	-0.3%	0.0%	0.0%
Households	Current Estimated Households	3,521	30,778	62,351	41,386
	2020 Census Households	3,543	30,850	62,032	41,321
	2010 Census Households	3,544	30,095	61,371	40,776
	Historical Annual Growth 2010 to 2020	0.0%	0.3%	0.1%	0.1%
	Estimated Annual Growth 2020 to 2024	-0.2%	-0.1%	0.1%	0.0%
	Projected Annual Growth 2024 to 2029	-0.2%	-0.1%	0.2%	0.1%
Race	Population per Household	2.6	2.6	2.7	2.7
	White	80.8%	80.4%	77.0%	77.6%
	Black or African American	4.0%	2.9%	3.3%	3.3%
	American Indian	0.2%	0.3%	0.3%	0.3%
	Asian	4.0%	3.3%	4.2%	3.7%
	Pacific Islander	0.0%	0.0%	0.0%	0.0%
	2 or More Races	7.6%	7.7%	8.9%	8.6%
	Other Races	3.4%	5.6%	6.4%	6.6%
Hispanic Origin		11.5%	14.4%	16.5%	16.6%