

Oak Valley Village
Beaumont, California

1 Mile Radius

3 Mile Radius

5 Mile Radius

10 Minute Drive

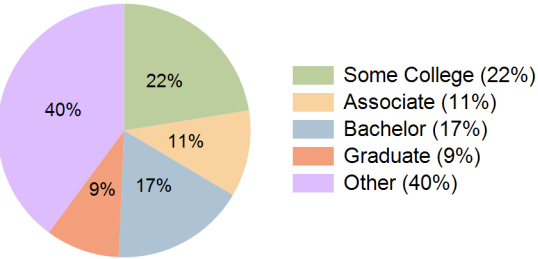
Current Year Demographics

Current Population	7,473	57,936	98,530	96,272
Total Daytime Pop	5,418	41,828	75,965	79,196
Daytime Workers	852	9,734	18,888	24,300
Average Household Income	\$128,287	\$122,825	\$118,443	\$109,645
Median Household Income	\$105,220	\$106,379	\$100,258	\$92,074
Total Households	2,509	18,629	34,781	32,408
Median Home Value	\$571,483	\$571,186	\$566,315	\$542,207
Bachelors Degree	20.4%	17.9%	18.9%	17.1%
Graduate Degree	14.5%	11.3%	11.1%	9.5%
Consumer Spending Index	109	105	102	95

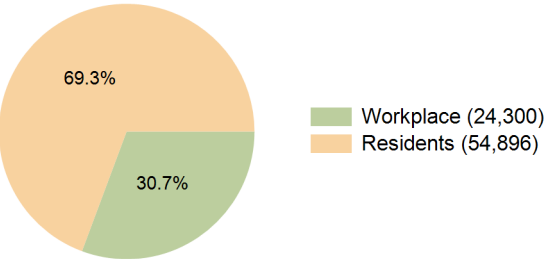
2030 Demographic Projections

Projected Population	7,837	61,304	104,048	101,327
Projected 5 Year Annual Growth Rate (Pop)	1.0%	1.1%	1.1%	1.0%
Projected Households	2,625	19,789	36,804	34,251
Projected 5 Year Annual Growth Rate (HH)	0.9%	1.2%	1.1%	1.1%

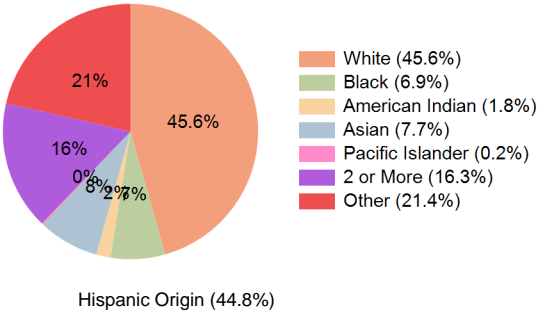
Education (10 Minute Drive)



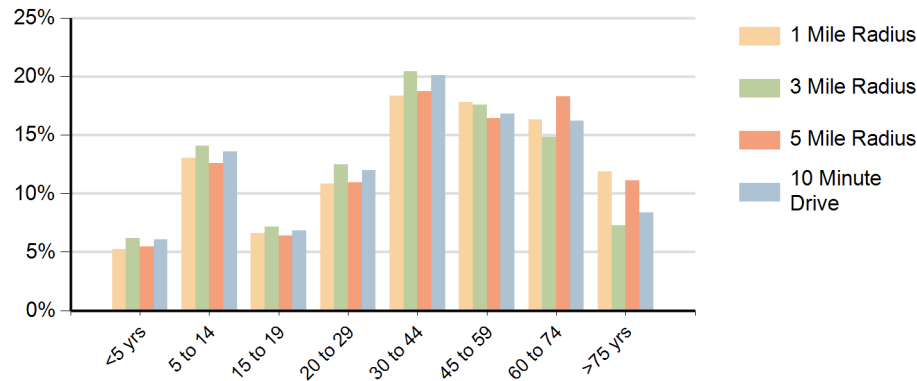
Daytime Population (10 Minute Drive)



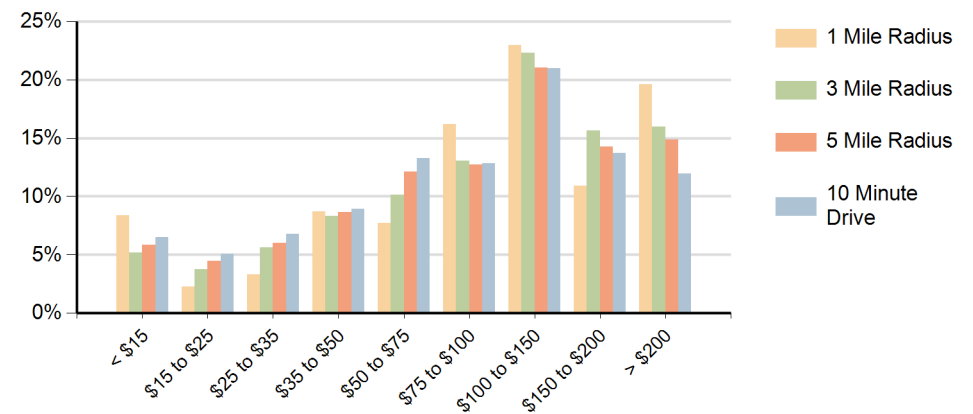
Race (10 Minute Drive)



Population by Age Range



Households by Income Range (\$000)



Oak Valley Village Beaumont, California		1 Mile Radius	3 Mile Radius	5 Mile Radius	10 Minute Drive
Population	Current Estimated Population	7,473	57,936	98,530	96,272
	2020 Census Population	7,334	50,392	86,396	86,899
	2010 Census Population	5,934	38,355	67,443	70,179
	Historical Annual Growth 2010 to 2020	2.1%	2.8%	2.5%	2.2%
	Estimated Annual Growth 2020 to 2025	0.4%	2.7%	2.5%	2.0%
	Projected Annual Growth 2025 to 2030	1.0%	1.1%	1.1%	1.0%
Households	Current Estimated Households	2,509	18,629	34,781	32,408
	2020 Census Households	2,441	16,129	30,683	29,222
	2010 Census Households	2,104	12,814	24,762	24,366
	Historical Annual Growth 2010 to 2020	1.5%	2.3%	2.2%	1.8%
	Estimated Annual Growth 2020 to 2025	0.5%	2.8%	2.4%	2.0%
	Projected Annual Growth 2025 to 2030	0.9%	1.2%	1.1%	1.1%
Race	Population per Household	3.0	3.1	2.8	3.0
	White	49.2%	44.7%	50.1%	45.6%
	Black or African American	6.3%	7.3%	6.6%	6.9%
	American Indian	1.5%	1.7%	1.7%	1.8%
	Asian	8.6%	8.7%	7.7%	7.7%
	Pacific Islander	0.3%	0.2%	0.2%	0.2%
	2 or More Races	18.5%	16.9%	16.1%	16.3%
	Other Races	15.6%	20.5%	17.7%	21.4%
Hispanic Origin		39.5%	44.3%	39.9%	44.8%