

The Shops at Stone Bridge
Cheshire, Connecticut

1 Mile Radius

3 Mile Radius

5 Mile Radius

10 Minute Drive

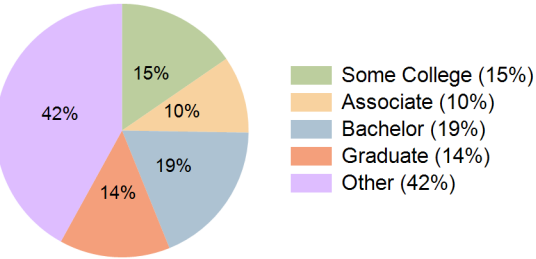
Current Year Demographics

Current Population	1,679	31,723	102,709	91,322
Total Daytime Pop	5,052	31,704	91,338	86,344
Daytime Workers	4,067	16,965	40,845	40,616
Average Household Income	\$147,498	\$166,203	\$139,090	\$124,191
Median Household Income	\$117,952	\$122,299	\$101,816	\$87,198
Total Households	701	11,696	40,390	35,783
Median Home Value	\$380,597	\$395,036	\$373,201	\$355,093
Bachelors Degree	16.8%	24.5%	21.9%	18.6%
Graduate Degree	15.1%	18.9%	17.0%	14.2%
Consumer Spending Index	128	143	122	109

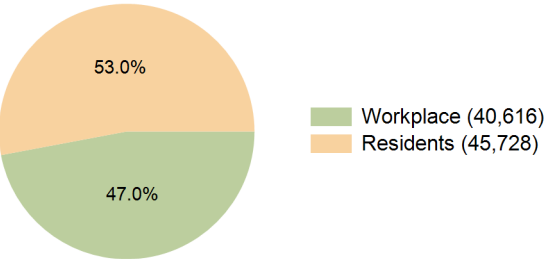
2029 Demographic Projections

Projected Population	1,658	31,350	101,530	90,488
Projected 5 Year Annual Growth Rate (Pop)	-0.3%	-0.2%	-0.2%	-0.2%
Projected Households	704	11,802	40,768	36,189
Projected 5 Year Annual Growth Rate (HH)	0.1%	0.2%	0.2%	0.2%

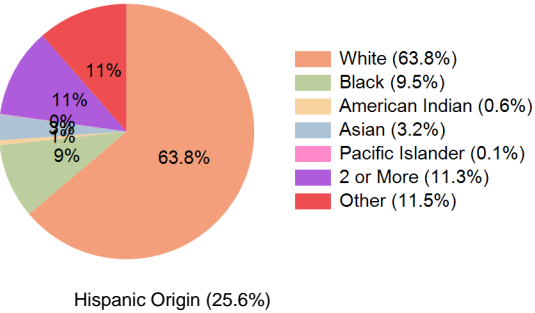
Education (10 Minute Drive)



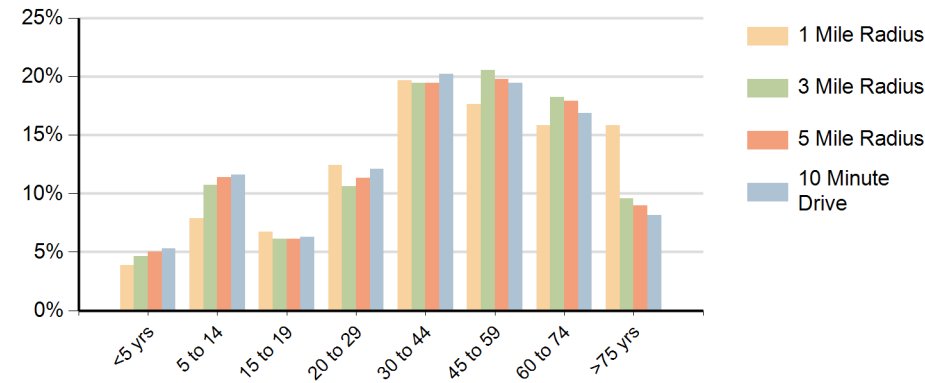
Daytime Population (10 Minute Drive)



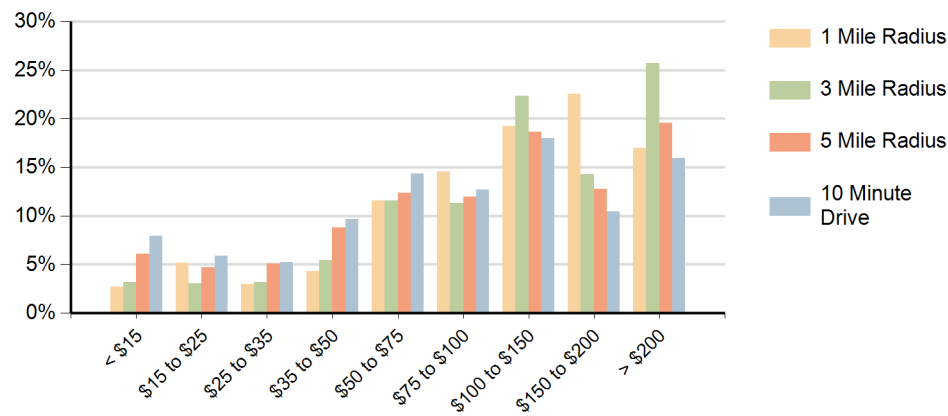
Race (10 Minute Drive)



Population by Age Range



Households by Income Range (\$000)



The Shops at Stone Bridge Cheshire, Connecticut		1 Mile Radius	3 Mile Radius	5 Mile Radius	10 Minute Drive
Population	Current Estimated Population	1,679	31,723	102,709	91,322
	2020 Census Population	1,715	31,633	102,732	91,291
	2010 Census Population	1,802	31,721	102,569	91,102
	Historical Annual Growth 2010 to 2020	-0.5%	0.0%	0.0%	0.0%
	Estimated Annual Growth 2020 to 2024	-0.5%	0.1%	0.0%	0.0%
	Projected Annual Growth 2024 to 2029	-0.3%	-0.2%	-0.2%	-0.2%
Households	Current Estimated Households	701	11,696	40,390	35,783
	2020 Census Households	702	11,559	39,927	35,408
	2010 Census Households	661	11,126	38,707	34,351
	Historical Annual Growth 2010 to 2020	0.6%	0.4%	0.3%	0.3%
	Estimated Annual Growth 2020 to 2024	0.0%	0.3%	0.3%	0.3%
	Projected Annual Growth 2024 to 2029	0.1%	0.2%	0.2%	0.2%
Race	Population per Household	1.8	2.5	2.5	2.5
	White	71.5%	81.8%	71.8%	63.8%
	Black or African American	12.0%	4.4%	6.9%	9.5%
	American Indian	0.2%	0.1%	0.4%	0.6%
	Asian	3.0%	3.8%	3.5%	3.2%
	Pacific Islander	0.0%	0.0%	0.1%	0.1%
	2 or More Races	5.1%	6.5%	9.5%	11.3%
	Other Races	8.0%	3.2%	7.9%	11.5%
Hispanic Origin		11.7%	7.8%	18.8%	25.6%