

Oakley Shops at Laurel Fields Oakley, California

1 Mile Radius

3 Mile Radius

5 Mile Radius

10 Minute Drive

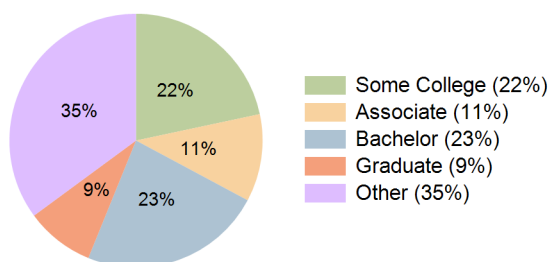
Current Year Demographics

Current Population	16,212	86,091	181,902	95,230
Total Daytime Pop	11,651	61,639	141,869	73,926
Daytime Workers	3,227	17,440	45,895	24,197
Average Household Income	\$154,015	\$165,321	\$158,846	\$161,163
Median Household Income	\$133,693	\$140,761	\$131,652	\$134,882
Total Households	4,836	25,392	55,488	28,379
Median Home Value	\$648,911	\$711,499	\$706,551	\$704,308
Bachelors Degree	18.8%	24.2%	24.1%	23.3%
Graduate Degree	6.1%	8.7%	9.7%	8.8%
Consumer Spending Index	130	140	134	136

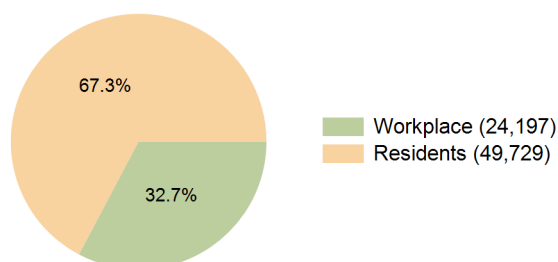
2030 Demographic Projections

Projected Population	16,609	90,376	187,474	99,945
Projected 5 Year Annual Growth Rate (Pop)	0.5%	1.0%	0.6%	1.0%
Projected Households	4,955	26,646	57,189	29,783
Projected 5 Year Annual Growth Rate (HH)	0.5%	1.0%	0.6%	1.0%

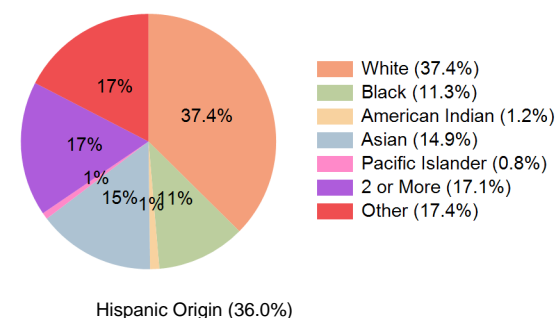
Education (10 Minute Drive)



Daytime Population (10 Minute Drive)

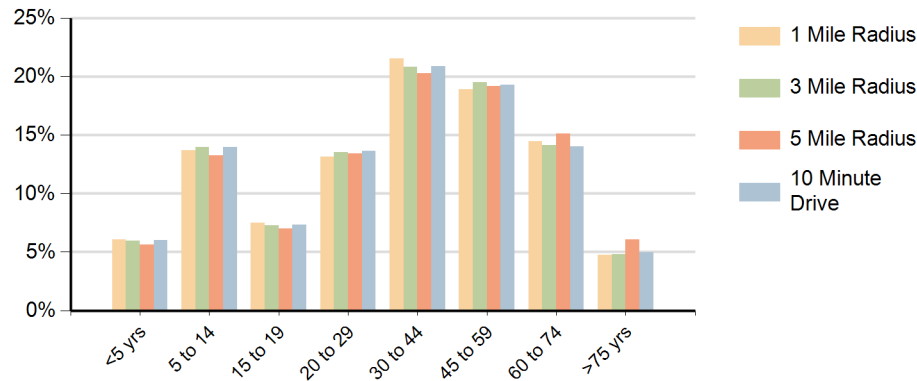


Race (10 Minute Drive)

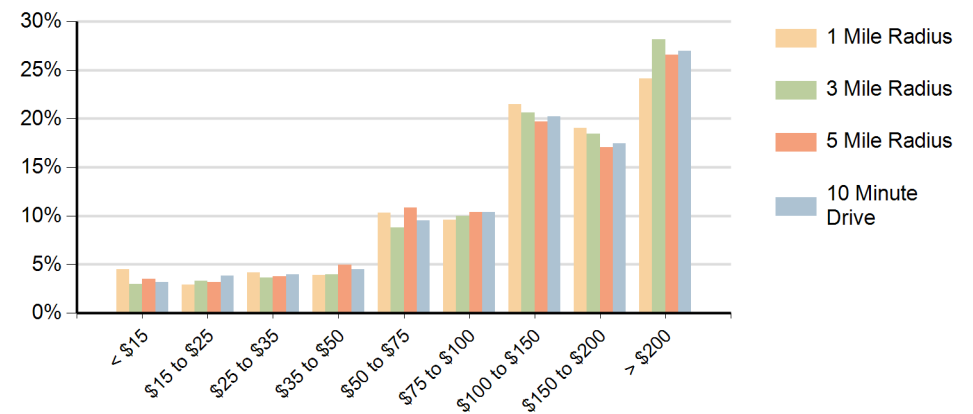


Hispanic Origin (36.0%)

Population by Age Range



Households by Income Range (\$000)



Oakley Shops at Laurel Fields Oakley, California		1 Mile Radius	3 Mile Radius	5 Mile Radius	10 Minute Drive
Population	Current Estimated Population	16,212	86,091	181,902	95,230
	2020 Census Population	15,486	77,846	168,786	87,308
	2010 Census Population	13,837	62,153	142,040	70,348
	Historical Annual Growth 2010 to 2020	1.1%	2.3%	1.7%	2.2%
	Estimated Annual Growth 2020 to 2025	0.9%	1.9%	1.4%	1.7%
	Projected Annual Growth 2025 to 2030	0.5%	1.0%	0.6%	1.0%
Households	Current Estimated Households	4,836	25,392	55,488	28,379
	2020 Census Households	4,621	22,959	51,517	25,988
	2010 Census Households	4,144	18,436	43,965	21,063
	Historical Annual Growth 2010 to 2020	1.1%	2.2%	1.6%	2.1%
	Estimated Annual Growth 2020 to 2025	0.9%	1.9%	1.4%	1.7%
	Projected Annual Growth 2025 to 2030	0.5%	1.0%	0.6%	1.0%
Race	Population per Household	3.3	3.4	3.3	3.3
	White	44.2%	37.7%	37.5%	37.4%
	Black or African American	5.8%	11.4%	12.8%	11.3%
	American Indian	1.0%	1.1%	1.1%	1.2%
	Asian	9.5%	15.8%	15.2%	14.9%
	Pacific Islander	0.7%	0.8%	0.9%	0.8%
	2 or More Races	19.2%	17.0%	16.3%	17.1%
	Other Races	19.7%	16.3%	16.1%	17.4%
Hispanic Origin		41.9%	34.6%	33.2%	36.0%