

Old Town Square  
Chicago,

1 Mile Radius

3 Mile Radius

5 Mile Radius

10 Minute Drive

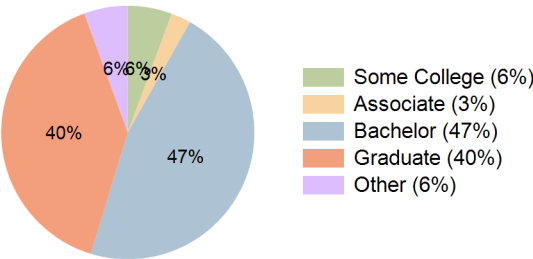
Current Year Demographics

Current Population	92,901	459,071	910,534	241,841
Total Daytime Pop	109,071	937,693	1,313,869	504,775
Daytime Workers	83,960	810,613	1,004,873	441,347
Average Household Income	\$190,499	\$183,807	\$154,438	\$189,489
Median Household Income	\$131,219	\$126,399	\$104,871	\$130,629
Total Households	58,348	261,002	470,592	145,864
Median Home Value	\$603,265	\$579,585	\$498,113	\$585,862
Bachelors Degree	47.4%	44.9%	38.4%	46.5%
Graduate Degree	38.3%	38.5%	30.4%	39.7%
Consumer Spending Index	163	157	132	162

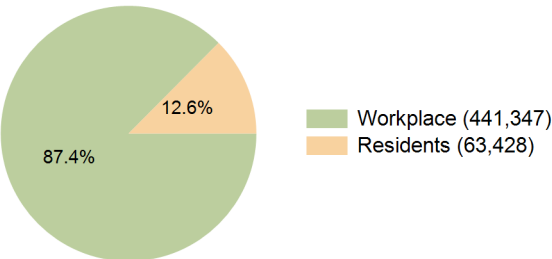
2030 Demographic Projections

Projected Population	94,431	468,495	914,199	247,530
Projected 5 Year Annual Growth Rate (Pop)	0.3%	0.4%	0.1%	0.5%
Projected Households	60,385	271,499	483,374	151,714
Projected 5 Year Annual Growth Rate (HH)	0.7%	0.8%	0.5%	0.8%

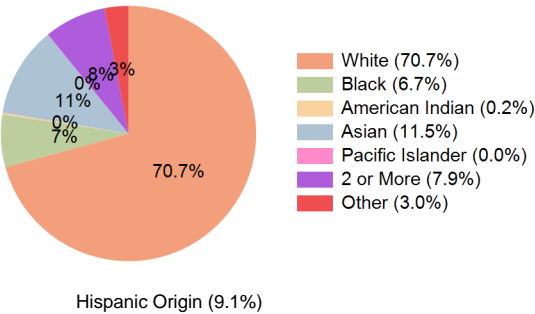
Education (10 Minute Drive)



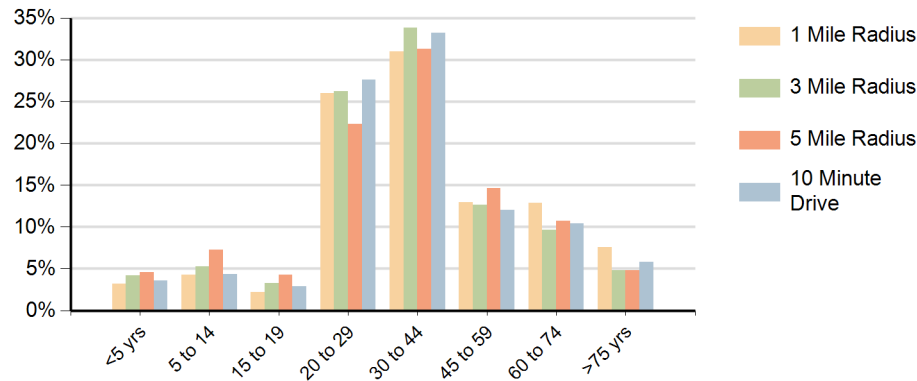
Daytime Population (10 Minute Drive)



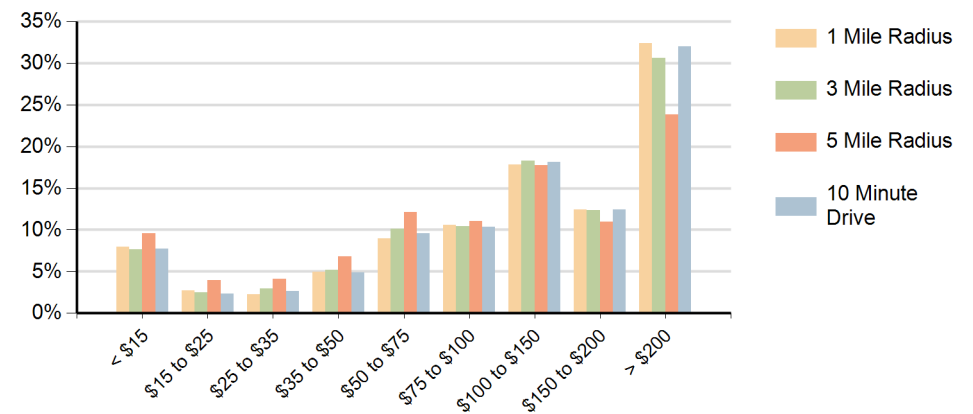
Race (10 Minute Drive)



### Population by Age Range



### Households by Income Range (\$000)



Old Town Square Chicago,		1 Mile Radius	3 Mile Radius	5 Mile Radius	10 Minute Drive
Population	Current Estimated Population	92,901	459,071	910,534	241,841
	2020 Census Population	92,243	453,522	922,082	239,439
	2010 Census Population	75,656	380,346	845,442	197,558
	Historical Annual Growth 2010 to 2020	2.0%	1.8%	0.9%	1.9%
	Estimated Annual Growth 2020 to 2025	0.1%	0.2%	-0.2%	0.2%
	Projected Annual Growth 2025 to 2030	0.3%	0.4%	0.1%	0.5%
Households	Current Estimated Households	58,348	261,002	470,592	145,864
	2020 Census Households	55,657	248,312	455,285	139,501
	2010 Census Households	46,137	206,500	395,140	114,915
	Historical Annual Growth 2010 to 2020	1.9%	1.9%	1.4%	2.0%
	Estimated Annual Growth 2020 to 2025	0.9%	1.0%	0.6%	0.9%
	Projected Annual Growth 2025 to 2030	0.7%	0.8%	0.5%	0.8%
Race	Population per Household	1.6	1.7	1.9	1.6
	White	72.3%	66.6%	52.6%	70.7%
	Black or African American	9.4%	8.1%	13.9%	6.7%
	American Indian	0.2%	0.3%	0.8%	0.2%
	Asian	9.4%	12.3%	11.5%	11.5%
	Pacific Islander	0.0%	0.0%	0.0%	0.0%
	2 or More Races	6.8%	8.6%	10.3%	7.9%
	Other Races	1.9%	4.1%	10.9%	3.0%
Hispanic Origin		6.8%	11.1%	22.0%	9.1%