

Nohl Plaza
Orange, California

1 Mile Radius

3 Mile Radius

5 Mile Radius

10 Minute Drive

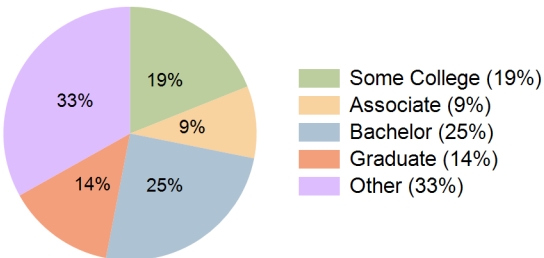
Current Year Demographics

Current Population	18,273	138,633	461,401	233,337
Total Daytime Pop	14,743	174,227	498,901	287,491
Daytime Workers	6,306	107,086	276,442	174,904
Average Household Income	\$164,344	\$156,758	\$147,406	\$144,887
Median Household Income	\$133,357	\$118,486	\$111,291	\$109,317
Total Households	6,069	45,094	151,886	76,212
Median Home Value	\$933,205	\$951,674	\$959,385	\$930,954
Bachelors Degree	26.5%	25.6%	26.6%	24.9%
Graduate Degree	15.1%	14.8%	14.9%	13.8%
Consumer Spending Index	138	132	125	123

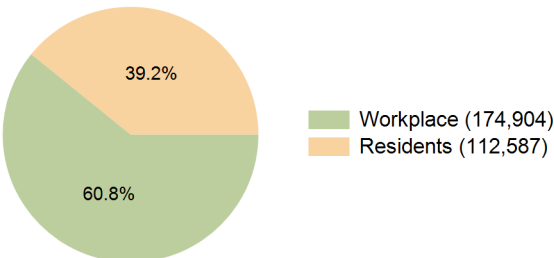
2030 Demographic Projections

Projected Population	18,130	138,954	461,583	233,473
Projected 5 Year Annual Growth Rate (Pop)	-0.2%	0.1%	0.0%	0.0%
Projected Households	6,130	46,096	154,839	78,023
Projected 5 Year Annual Growth Rate (HH)	0.2%	0.4%	0.4%	0.5%

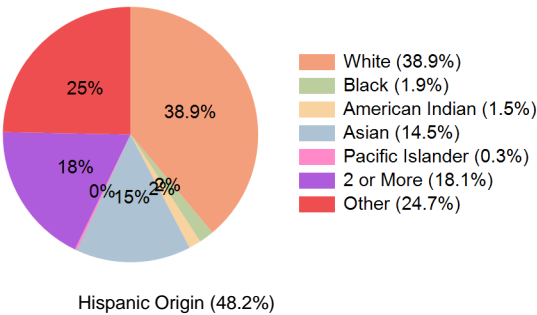
Education (10 Minute Drive)



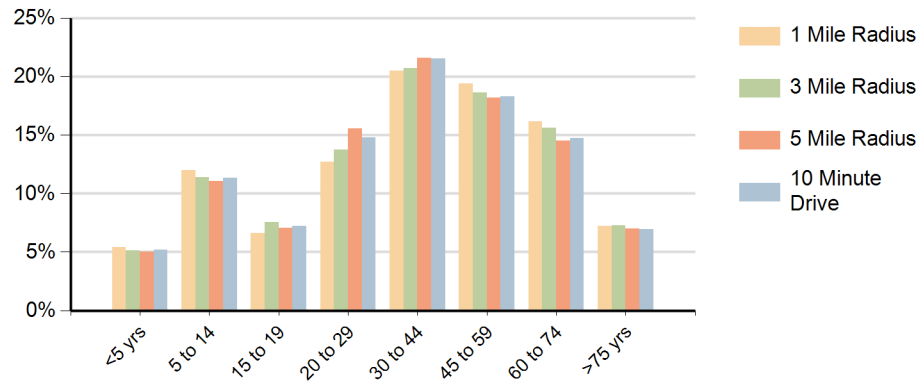
Daytime Population (10 Minute Drive)



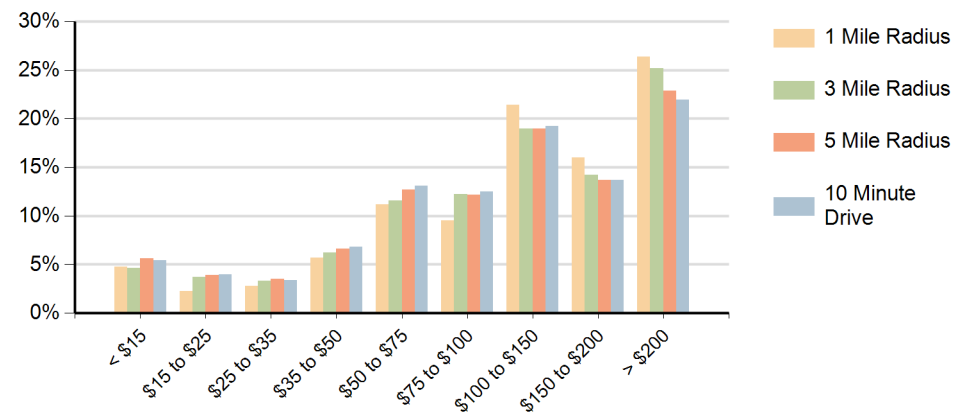
Race (10 Minute Drive)



Population by Age Range



Households by Income Range (\$000)



Nohl Plaza Orange, California		1 Mile Radius	3 Mile Radius	5 Mile Radius	10 Minute Drive
Population	Current Estimated Population	18,273	138,633	461,401	233,337
	2020 Census Population	18,808	141,873	464,146	236,369
	2010 Census Population	18,159	137,920	443,407	229,829
	Historical Annual Growth 2010 to 2020	0.4%	0.3%	0.5%	0.3%
	Estimated Annual Growth 2020 to 2025	-0.6%	-0.4%	-0.1%	-0.3%
	Projected Annual Growth 2025 to 2030	-0.2%	0.1%	0.0%	0.0%
Households	Current Estimated Households	6,069	45,094	151,886	76,212
	2020 Census Households	6,046	44,591	148,064	74,594
	2010 Census Households	5,823	43,157	138,216	71,662
	Historical Annual Growth 2010 to 2020	0.4%	0.3%	0.7%	0.4%
	Estimated Annual Growth 2020 to 2025	0.1%	0.2%	0.5%	0.4%
	Projected Annual Growth 2025 to 2030	0.2%	0.4%	0.4%	0.5%
Race	Population per Household	3.0	3.0	3.0	3.0
	White	44.0%	40.9%	39.5%	38.9%
	Black or African American	1.6%	1.8%	2.0%	1.9%
	American Indian	1.3%	1.4%	1.4%	1.5%
	Asian	14.5%	16.4%	15.6%	14.5%
	Pacific Islander	0.4%	0.3%	0.3%	0.3%
	2 or More Races	18.9%	17.7%	17.5%	18.1%
	Other Races	19.3%	21.6%	23.7%	24.7%
Hispanic Origin		42.2%	43.8%	46.5%	48.2%