

The Longmeadow Shops Longmeadow, Massachusetts

1 Mile Radius

3 Mile Radius

5 Mile Radius

10 Minute Drive

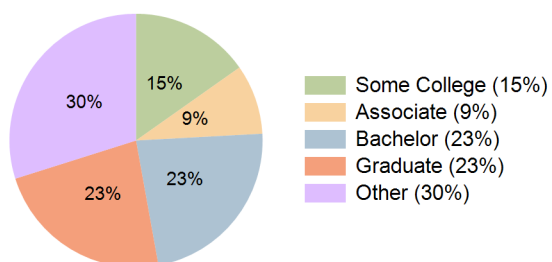
Current Year Demographics

Current Population	5,972	74,445	188,272	42,304
Total Daytime Pop	7,276	60,766	194,800	39,048
Daytime Workers	3,796	20,407	88,785	16,110
Average Household Income	\$174,473	\$107,597	\$91,342	\$124,486
Median Household Income	\$132,221	\$78,509	\$64,879	\$93,144
Total Households	2,412	28,936	72,797	16,356
Median Home Value	\$497,368	\$333,590	\$313,725	\$362,102
Bachelors Degree	29.7%	19.0%	16.8%	23.0%
Graduate Degree	39.5%	18.2%	13.6%	23.0%
Consumer Spending Index	147	93	79	106

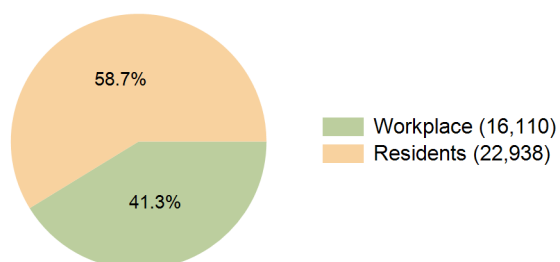
2030 Demographic Projections

Projected Population	5,872	73,432	185,877	41,739
Projected 5 Year Annual Growth Rate (Pop)	-0.3%	-0.3%	-0.3%	-0.3%
Projected Households	2,407	28,941	72,881	16,354
Projected 5 Year Annual Growth Rate (HH)	0.0%	0.0%	0.0%	0.0%

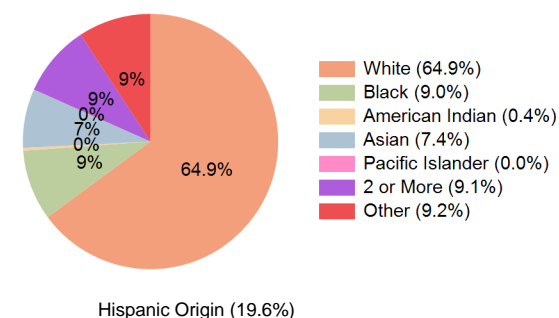
Education (10 Minute Drive)



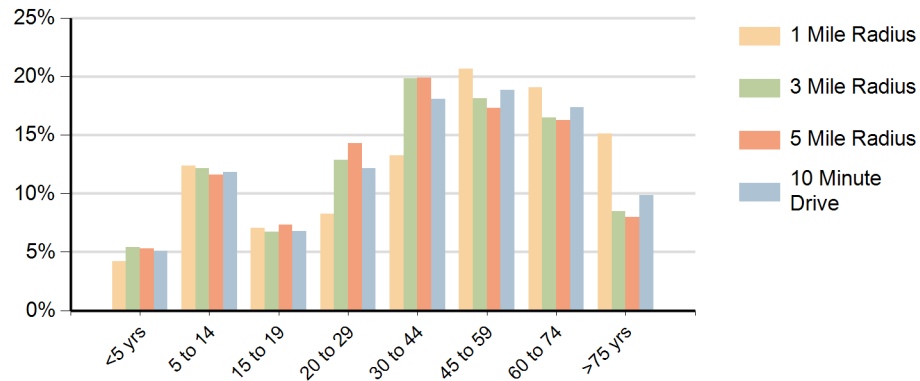
Daytime Population (10 Minute Drive)



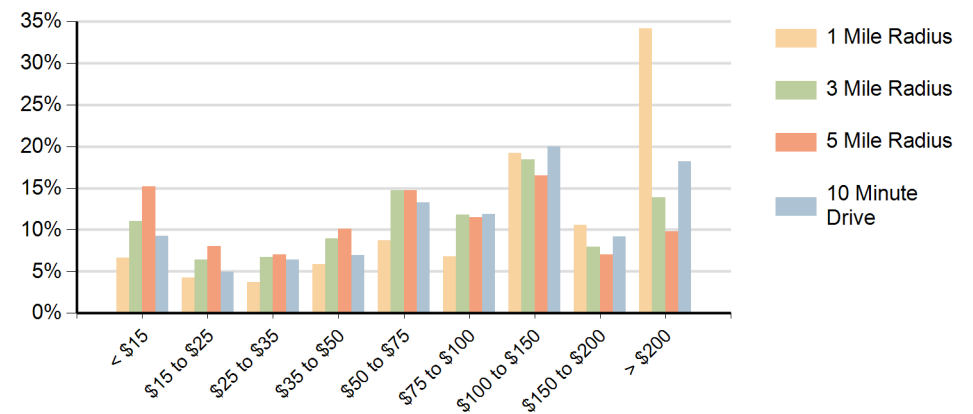
Race (10 Minute Drive)



Population by Age Range



Households by Income Range (\$000)



The Longmeadow Shops Longmeadow, Massachusetts		1 Mile Radius	3 Mile Radius	5 Mile Radius	10 Minute Drive
Population	Current Estimated Population	5,972	74,445	188,272	42,304
	2020 Census Population	6,031	75,505	191,731	42,827
	2010 Census Population	5,892	74,915	191,599	41,958
	Historical Annual Growth 2010 to 2020	0.2%	0.1%	0.0%	0.2%
	Estimated Annual Growth 2020 to 2025	-0.2%	-0.3%	-0.4%	-0.2%
	Projected Annual Growth 2025 to 2030	-0.3%	-0.3%	-0.3%	-0.3%
Households	Current Estimated Households	2,412	28,936	72,797	16,356
	2020 Census Households	2,406	28,740	72,285	16,260
	2010 Census Households	2,423	27,888	70,174	15,914
	Historical Annual Growth 2010 to 2020	-0.1%	0.3%	0.3%	0.2%
	Estimated Annual Growth 2020 to 2025	0.1%	0.1%	0.1%	0.1%
	Projected Annual Growth 2025 to 2030	0.0%	0.0%	0.0%	0.0%
Race	Population per Household	2.4	2.5	2.5	2.5
	White	78.0%	57.4%	52.5%	64.9%
	Black or African American	2.6%	12.0%	15.1%	9.0%
	American Indian	0.1%	0.5%	0.6%	0.4%
	Asian	10.9%	6.1%	4.1%	7.4%
	Pacific Islander	0.0%	0.1%	0.1%	0.0%
	2 or More Races	6.1%	10.3%	11.2%	9.1%
	Other Races	2.3%	13.6%	16.4%	9.2%
Hispanic Origin		6.3%	27.3%	31.9%	19.6%