

University Commons - Austin  
Round Rock, Texas

1 Mile Radius

3 Mile Radius

5 Mile Radius

10 Minute Drive

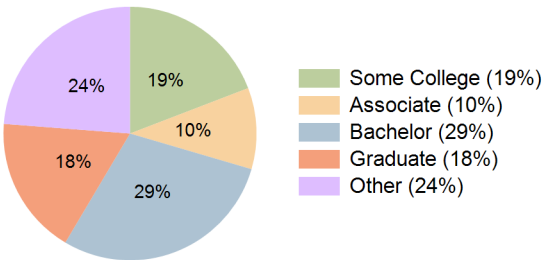
Current Year Demographics

Current Population	8,526	63,638	173,188	94,918
Total Daytime Pop	11,951	60,855	156,799	98,522
Daytime Workers	8,371	31,443	75,147	53,392
Average Household Income	\$114,730	\$136,599	\$140,490	\$134,305
Median Household Income	\$74,388	\$101,320	\$105,366	\$99,421
Total Households	3,536	22,886	61,738	34,450
Median Home Value	\$474,735	\$483,853	\$472,172	\$476,294
Bachelors Degree	32.6%	29.5%	30.4%	29.0%
Graduate Degree	26.6%	17.3%	17.8%	17.7%
Consumer Spending Index	104	122	124	119

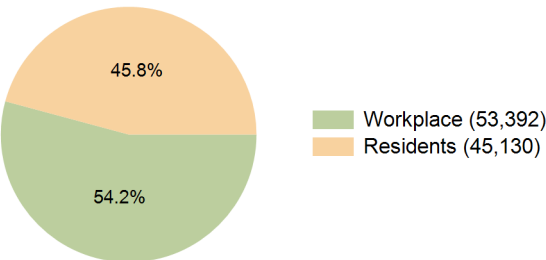
2029 Demographic Projections

Projected Population	9,168	73,269	194,674	107,738
Projected 5 Year Annual Growth Rate (Pop)	1.5%	2.9%	2.4%	2.6%
Projected Households	3,827	26,787	70,222	39,529
Projected 5 Year Annual Growth Rate (HH)	1.6%	3.2%	2.6%	2.8%

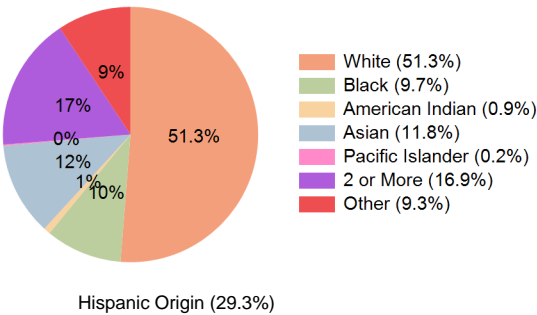
Education (10 Minute Drive)



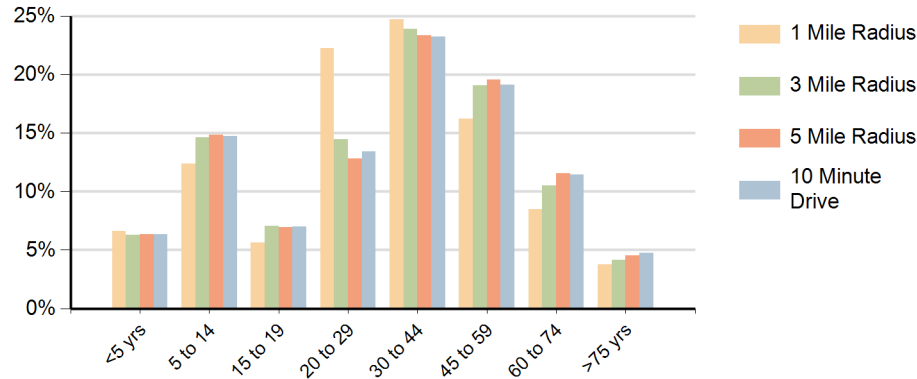
Daytime Population (10 Minute Drive)



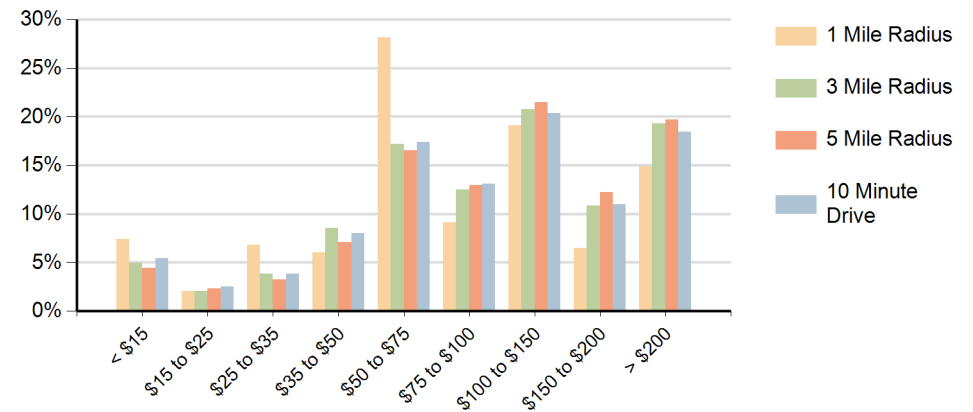
Race (10 Minute Drive)



### Population by Age Range



### Households by Income Range (\$000)



University Commons - Austin Round Rock, Texas		1 Mile Radius	3 Mile Radius	5 Mile Radius	10 Minute Drive
Population	Current Estimated Population	8,526	63,638	173,188	94,918
	2020 Census Population	6,911	57,854	158,647	87,300
	2010 Census Population	4,617	41,796	118,508	66,040
	Historical Annual Growth 2010 to 2020	4.1%	3.3%	3.0%	2.8%
	Estimated Annual Growth 2020 to 2024	5.1%	2.3%	2.1%	2.0%
	Projected Annual Growth 2024 to 2029	1.5%	2.9%	2.4%	2.6%
Households	Current Estimated Households	3,536	22,886	61,738	34,450
	2020 Census Households	2,956	20,626	56,315	31,673
	2010 Census Households	1,737	14,069	40,992	22,924
	Historical Annual Growth 2010 to 2020	5.5%	3.9%	3.2%	3.3%
	Estimated Annual Growth 2020 to 2024	4.3%	2.5%	2.2%	2.0%
	Projected Annual Growth 2024 to 2029	1.6%	3.2%	2.6%	2.8%
Race	Population per Household	2.4	2.8	2.8	2.7
	White	48.0%	48.8%	52.1%	51.3%
	Black or African American	15.1%	11.2%	9.0%	9.7%
	American Indian	0.8%	0.8%	0.8%	0.9%
	Asian	11.7%	13.1%	12.6%	11.8%
	Pacific Islander	0.4%	0.2%	0.2%	0.2%
	2 or More Races	15.5%	16.8%	16.7%	16.9%
	Other Races	8.6%	9.1%	8.7%	9.3%
Hispanic Origin		26.5%	28.7%	28.0%	29.3%