

Crystal Brook Corner
Mount Sinai, New York

1 Mile Radius

3 Mile Radius

5 Mile Radius

10 Minute Drive

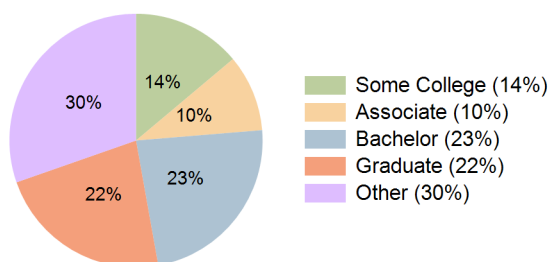
Current Year Demographics

Current Population	6,934	69,067	159,804	67,169
Total Daytime Pop	7,370	61,106	164,895	59,152
Daytime Workers	3,829	25,150	81,640	24,359
Average Household Income	\$151,673	\$161,205	\$157,161	\$157,338
Median Household Income	\$128,605	\$130,899	\$128,925	\$129,627
Total Households	2,572	25,338	55,493	24,648
Median Home Value	\$648,018	\$610,707	\$589,679	\$602,219
Bachelors Degree	19.8%	23.6%	22.7%	23.5%
Graduate Degree	24.7%	23.7%	22.2%	22.5%
Consumer Spending Index	128	135	132	132

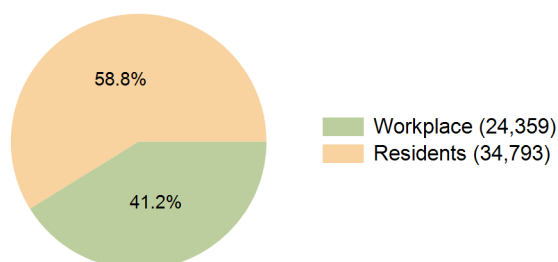
2030 Demographic Projections

Projected Population	6,901	69,424	159,292	67,489
Projected 5 Year Annual Growth Rate (Pop)	-0.1%	0.1%	-0.1%	0.1%
Projected Households	2,589	25,754	55,865	25,041
Projected 5 Year Annual Growth Rate (HH)	0.1%	0.3%	0.1%	0.3%

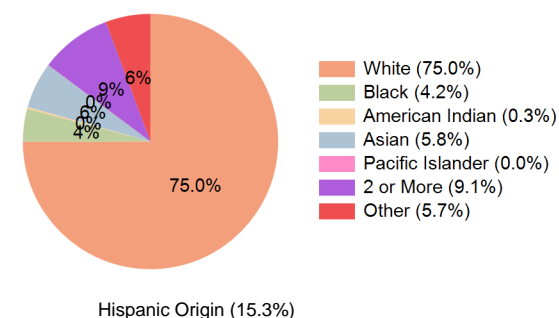
Education (10 Minute Drive)



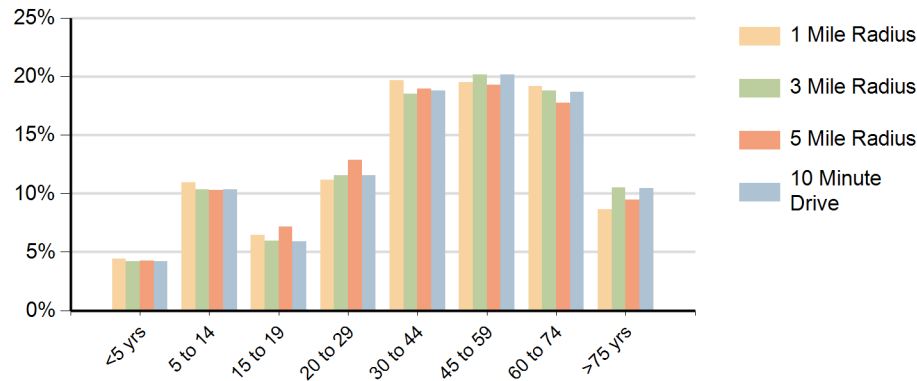
Daytime Population (10 Minute Drive)



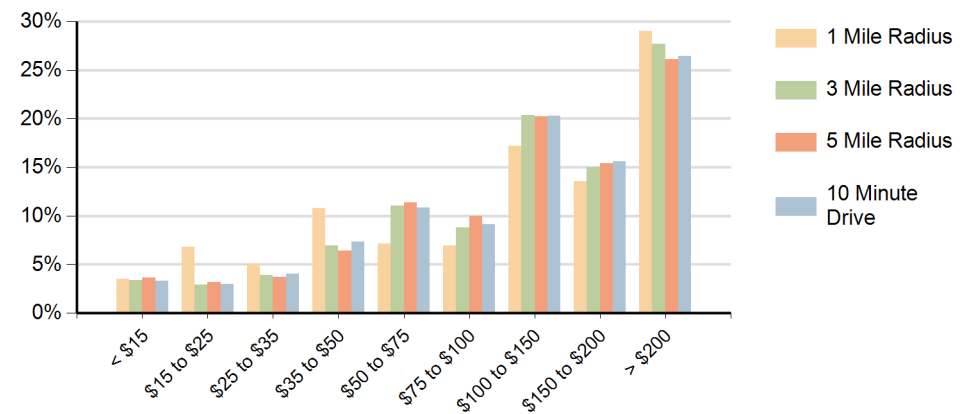
Race (10 Minute Drive)



Population by Age Range



Households by Income Range (\$000)



Crystal Brook Corner Mount Sinai, New York		1 Mile Radius	3 Mile Radius	5 Mile Radius	10 Minute Drive
Population	Current Estimated Population	6,934	69,067	159,804	67,169
	2020 Census Population	6,960	67,988	159,806	66,172
	2010 Census Population	6,852	69,206	160,776	67,112
	Historical Annual Growth 2010 to 2020	0.2%	-0.2%	-0.1%	-0.1%
	Estimated Annual Growth 2020 to 2025	-0.1%	0.3%	0.0%	0.3%
	Projected Annual Growth 2025 to 2030	-0.1%	0.1%	-0.1%	0.1%
Households	Current Estimated Households	2,572	25,338	55,493	24,648
	2020 Census Households	2,539	24,555	54,804	23,907
	2010 Census Households	2,429	24,161	54,065	23,487
	Historical Annual Growth 2010 to 2020	0.4%	0.2%	0.1%	0.2%
	Estimated Annual Growth 2020 to 2025	0.3%	0.6%	0.2%	0.6%
	Projected Annual Growth 2025 to 2030	0.1%	0.3%	0.1%	0.3%
Race	Population per Household	2.7	2.7	2.7	2.7
	White	73.4%	75.7%	70.8%	75.0%
	Black or African American	2.9%	3.8%	6.4%	4.2%
	American Indian	0.3%	0.2%	0.3%	0.3%
	Asian	6.6%	6.0%	7.6%	5.8%
	Pacific Islander	0.0%	0.0%	0.0%	0.0%
	2 or More Races	10.3%	8.8%	9.3%	9.1%
	Other Races	6.4%	5.5%	5.6%	5.7%
Hispanic Origin		17.4%	14.8%	15.3%	15.3%