

**Willow Lake**  
Indianapolis, Ohio

**1 Mile Radius**

**3 Mile Radius**

**5 Mile Radius**

**10 Minute Drive**

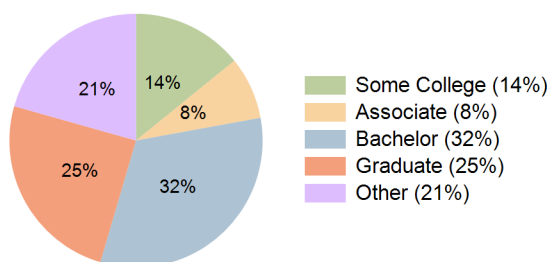
### Current Year Demographics

Current Population	11,239	62,117	158,408	79,632
Total Daytime Pop	31,203	94,395	228,138	128,318
Daytime Workers	26,473	67,591	158,762	93,705
Average Household Income	\$98,226	\$122,004	\$137,460	\$132,508
Median Household Income	\$76,130	\$79,724	\$91,985	\$85,520
Total Households	6,182	27,033	67,781	34,083
Median Home Value	\$258,617	\$318,392	\$367,132	\$359,349
Bachelors Degree	30.4%	30.8%	33.7%	32.4%
Graduate Degree	21.9%	22.2%	25.2%	24.8%
Consumer Spending Index	86	106	118	114

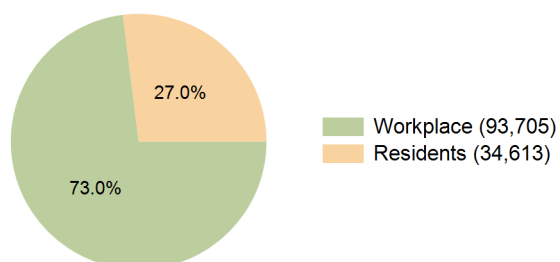
### 2030 Demographic Projections

Projected Population	11,118	63,162	163,532	81,849
Projected 5 Year Annual Growth Rate (Pop)	-0.2%	0.3%	0.6%	0.6%
Projected Households	6,132	27,481	70,161	35,031
Projected 5 Year Annual Growth Rate (HH)	-0.2%	0.3%	0.7%	0.6%

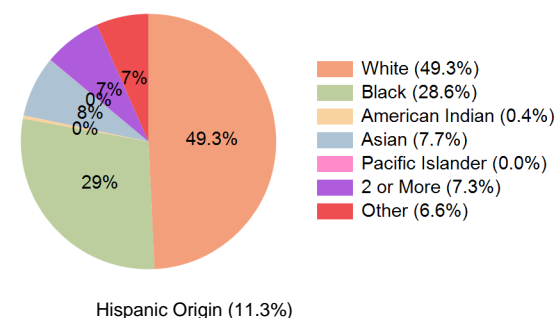
**Education (10 Minute Drive)**



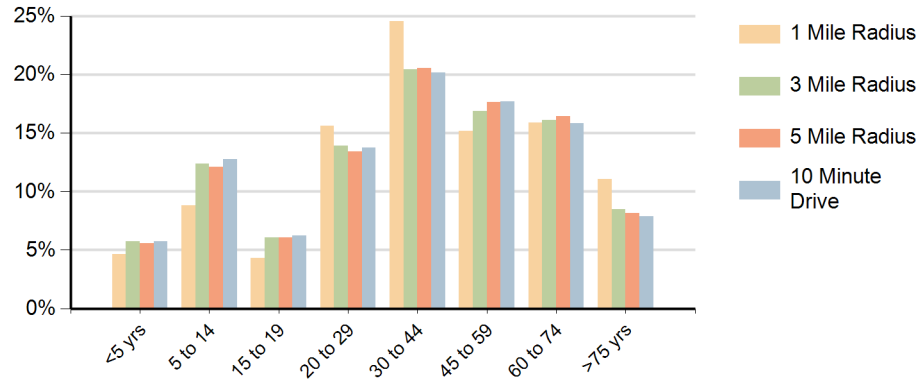
**Daytime Population (10 Minute Drive)**



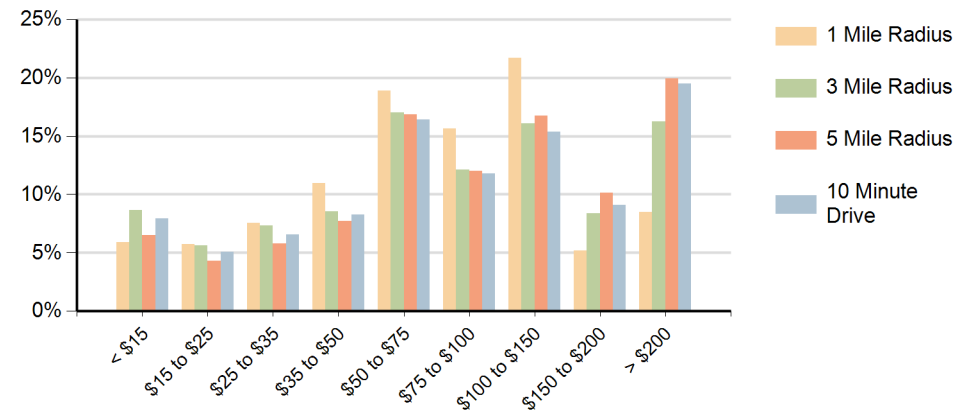
**Race (10 Minute Drive)**



### Population by Age Range



### Households by Income Range (\$000)



Willow Lake Indianapolis, Ohio		1 Mile Radius	3 Mile Radius	5 Mile Radius	10 Minute Drive
Population	Current Estimated Population	11,239	62,117	158,408	79,632
	2020 Census Population	11,582	61,697	155,965	78,617
	2010 Census Population	11,035	57,841	140,739	72,133
	Historical Annual Growth 2010 to 2020	0.5%	0.7%	1.0%	0.9%
	Estimated Annual Growth 2020 to 2025	-0.6%	0.1%	0.3%	0.2%
	Projected Annual Growth 2025 to 2030	-0.2%	0.3%	0.6%	0.6%
Households	Current Estimated Households	6,182	27,033	67,781	34,083
	2020 Census Households	6,241	26,663	66,154	33,427
	2010 Census Households	5,704	24,956	59,536	30,548
	Historical Annual Growth 2010 to 2020	0.9%	0.7%	1.1%	0.9%
	Estimated Annual Growth 2020 to 2025	-0.2%	0.3%	0.5%	0.4%
	Projected Annual Growth 2025 to 2030	-0.2%	0.3%	0.7%	0.6%
Race	Population per Household	1.8	2.3	2.3	2.3
	White	47.5%	45.1%	54.0%	49.3%
	Black or African American	34.3%	33.7%	26.0%	28.6%
	American Indian	0.2%	0.5%	0.4%	0.4%
	Asian	4.2%	5.9%	6.5%	7.7%
	Pacific Islander	0.0%	0.0%	0.0%	0.0%
	2 or More Races	7.5%	7.5%	7.4%	7.3%
	Other Races	6.3%	7.3%	5.7%	6.6%
Hispanic Origin		11.0%	12.2%	10.4%	11.3%