

**Stefko Blvd Shopping Center**  
Bethlehem, Pennsylvania

**1 Mile Radius**

**3 Mile Radius**

**5 Mile Radius**

**10 Minute Drive**

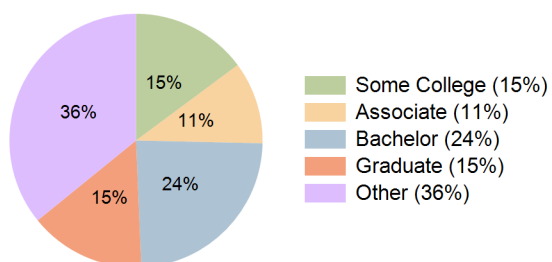
### Current Year Demographics

Current Population	15,883	89,359	162,739	85,300
Total Daytime Pop	12,579	93,290	181,574	86,493
Daytime Workers	4,544	47,218	98,034	43,004
Average Household Income	\$100,161	\$109,609	\$110,534	\$111,780
Median Household Income	\$75,196	\$78,795	\$80,907	\$79,964
Total Households	6,469	35,127	64,029	33,657
Median Home Value	\$268,549	\$325,825	\$344,280	\$330,031
Bachelors Degree	16.7%	23.7%	22.9%	24.0%
Graduate Degree	9.7%	15.0%	15.9%	14.8%
Consumer Spending Index	87	95	95	96

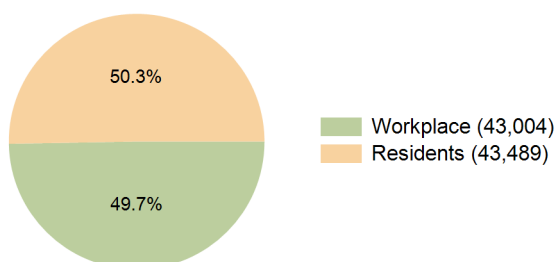
### 2030 Demographic Projections

Projected Population	15,697	90,562	163,808	86,593
Projected 5 Year Annual Growth Rate (Pop)	-0.2%	0.3%	0.1%	0.3%
Projected Households	6,426	35,939	64,888	34,491
Projected 5 Year Annual Growth Rate (HH)	-0.1%	0.5%	0.3%	0.5%

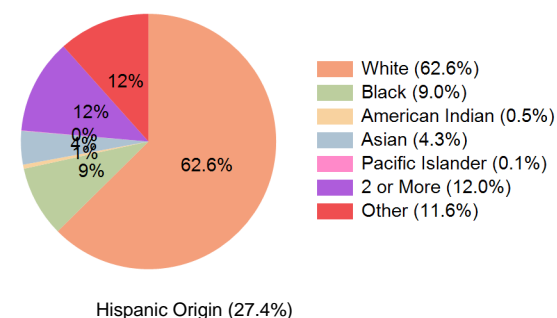
**Education (10 Minute Drive)**



**Daytime Population (10 Minute Drive)**

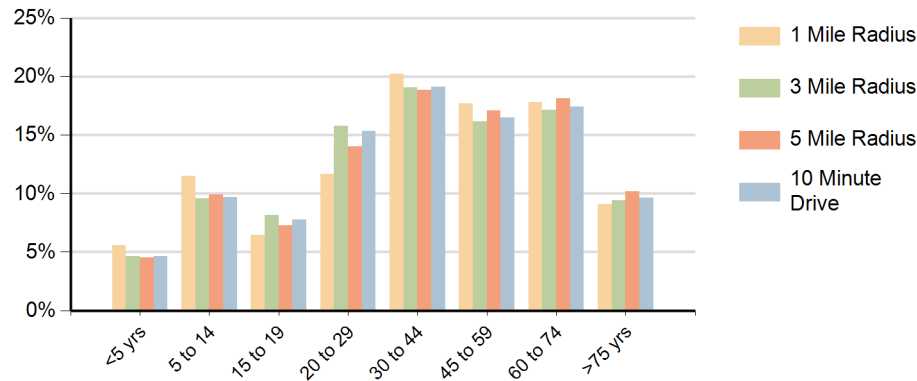


**Race (10 Minute Drive)**

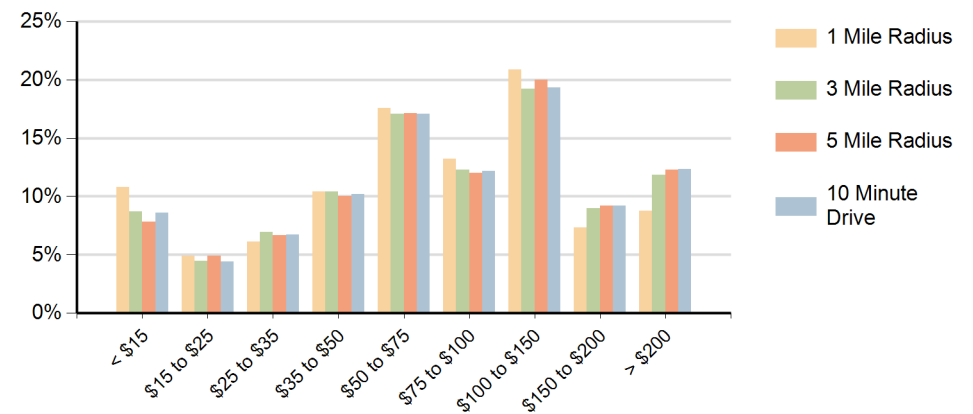


Hispanic Origin (27.4%)

### Population by Age Range



### Households by Income Range (\$000)



Stefko Blvd Shopping Center Bethlehem, Pennsylvania		1 Mile Radius	3 Mile Radius	5 Mile Radius	10 Minute Drive
Population	Current Estimated Population	15,883	89,359	162,739	85,300
	2020 Census Population	15,926	85,250	157,372	80,856
	2010 Census Population	15,317	82,546	151,472	78,045
	Historical Annual Growth 2010 to 2020	0.4%	0.3%	0.4%	0.4%
	Estimated Annual Growth 2020 to 2025	-0.1%	0.9%	0.6%	1.0%
	Projected Annual Growth 2025 to 2030	-0.2%	0.3%	0.1%	0.3%
Households	Current Estimated Households	6,469	35,127	64,029	33,657
	2020 Census Households	6,420	33,653	61,988	32,023
	2010 Census Households	6,252	31,653	58,978	30,281
	Historical Annual Growth 2010 to 2020	0.3%	0.6%	0.5%	0.6%
	Estimated Annual Growth 2020 to 2025	0.1%	0.8%	0.6%	1.0%
	Projected Annual Growth 2025 to 2030	-0.1%	0.5%	0.3%	0.5%
Race	Population per Household	2.5	2.4	2.4	2.4
	White	58.4%	62.3%	65.5%	62.6%
	Black or African American	10.2%	8.9%	7.9%	9.0%
	American Indian	0.5%	0.5%	0.5%	0.5%
	Asian	2.0%	4.3%	4.3%	4.3%
	Pacific Islander	0.1%	0.1%	0.1%	0.1%
	2 or More Races	15.4%	12.1%	11.2%	12.0%
	Other Races	13.3%	11.8%	10.7%	11.6%
Hispanic Origin		35.6%	27.7%	24.9%	27.4%