

### Market at Round Rock Round Rock, Texas

#### 1 Mile Radius

#### 3 Mile Radius

#### 5 Mile Radius

#### 10 Minute Drive

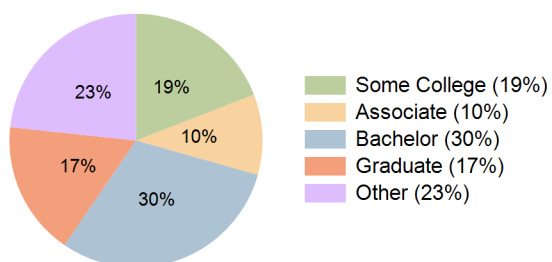
### Current Year Demographics

Current Population	7,410	97,381	235,795	136,730
Total Daytime Pop	19,559	108,070	225,281	149,240
Daytime Workers	15,786	65,922	122,199	91,749
Average Household Income	\$106,344	\$123,378	\$141,143	\$126,612
Median Household Income	\$81,901	\$93,453	\$110,732	\$98,449
Total Households	2,846	38,051	88,163	53,482
Median Home Value	\$401,577	\$451,563	\$477,235	\$454,243
Bachelors Degree	23.7%	28.4%	32.3%	30.2%
Graduate Degree	13.1%	14.8%	19.2%	17.1%
Consumer Spending Index	93	107	122	110

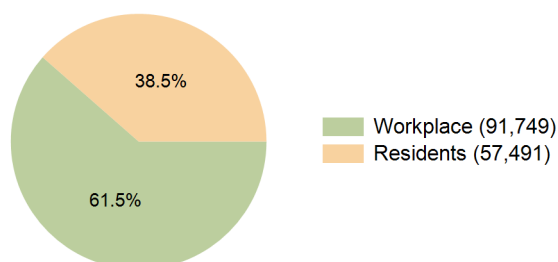
### 2030 Demographic Projections

Projected Population	8,285	108,125	259,278	148,993
Projected 5 Year Annual Growth Rate (Pop)	2.3%	2.1%	1.9%	1.7%
Projected Households	3,224	42,766	98,109	59,010
Projected 5 Year Annual Growth Rate (HH)	2.5%	2.4%	2.2%	2.0%

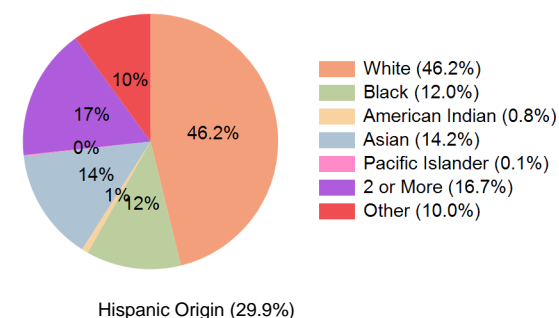
Education (10 Minute Drive)



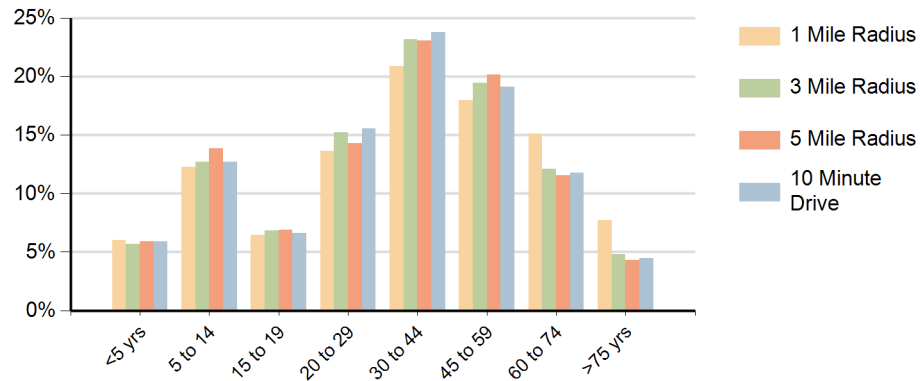
Daytime Population (10 Minute Drive)



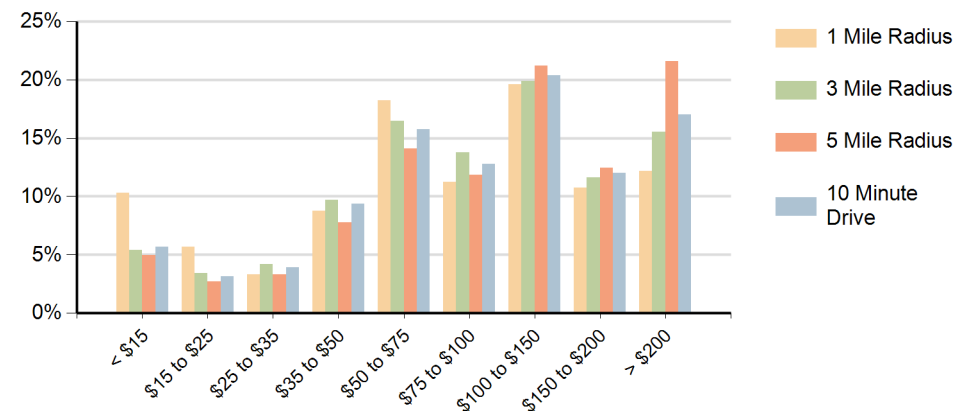
Race (10 Minute Drive)



### Population by Age Range



### Households by Income Range (\$000)



Market at Round Rock Round Rock, Texas		1 Mile Radius	3 Mile Radius	5 Mile Radius	10 Minute Drive
Population	Current Estimated Population	7,410	97,381	235,795	136,730
	2020 Census Population	7,566	93,862	224,504	130,064
	2010 Census Population	7,555	81,509	180,875	109,845
	Historical Annual Growth 2010 to 2020	0.0%	1.4%	2.2%	1.7%
	Estimated Annual Growth 2020 to 2025	-0.4%	0.7%	0.9%	1.0%
	Projected Annual Growth 2025 to 2030	2.3%	2.1%	1.9%	1.7%
Households	Current Estimated Households	2,846	38,051	88,163	53,482
	2020 Census Households	2,842	35,611	81,480	49,252
	2010 Census Households	2,792	29,691	64,228	39,872
	Historical Annual Growth 2010 to 2020	0.2%	1.8%	2.4%	2.1%
	Estimated Annual Growth 2020 to 2025	0.0%	1.3%	1.5%	1.6%
	Projected Annual Growth 2025 to 2030	2.5%	2.4%	2.2%	2.0%
Race	Population per Household	2.5	2.5	2.7	2.5
	White	50.9%	47.6%	45.7%	46.2%
	Black or African American	9.1%	10.7%	11.1%	12.0%
	American Indian	1.3%	0.8%	0.7%	0.8%
	Asian	3.6%	13.1%	17.8%	14.2%
	Pacific Islander	0.2%	0.1%	0.1%	0.1%
	2 or More Races	19.4%	17.2%	16.1%	16.7%
	Other Races	15.6%	10.5%	8.4%	10.0%
Hispanic Origin		39.5%	31.2%	26.7%	29.9%