

Buckley Square
Aurora, Colorado

1 Mile Radius

3 Mile Radius

5 Mile Radius

10 Minute Drive

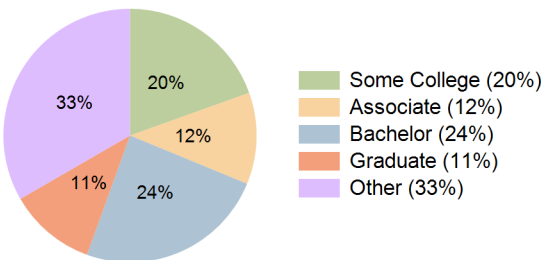
Current Year Demographics

Current Population	19,461	163,296	341,016	164,824
Total Daytime Pop	11,623	119,827	262,293	114,084
Daytime Workers	2,689	46,080	107,815	39,530
Average Household Income	\$106,463	\$102,440	\$114,489	\$103,260
Median Household Income	\$84,368	\$79,919	\$84,563	\$80,746
Total Households	6,940	62,715	127,118	63,569
Median Home Value	\$489,156	\$471,282	\$511,634	\$471,278
Bachelors Degree	22.4%	23.8%	26.0%	24.3%
Graduate Degree	7.9%	11.0%	13.1%	11.2%
Consumer Spending Index	94	91	102	92

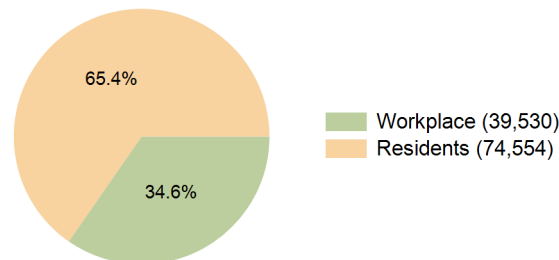
2029 Demographic Projections

Projected Population	19,413	164,074	344,039	165,578
Projected 5 Year Annual Growth Rate (Pop)	-0.1%	0.1%	0.2%	0.1%
Projected Households	6,947	63,455	128,687	64,326
Projected 5 Year Annual Growth Rate (HH)	0.0%	0.2%	0.3%	0.2%

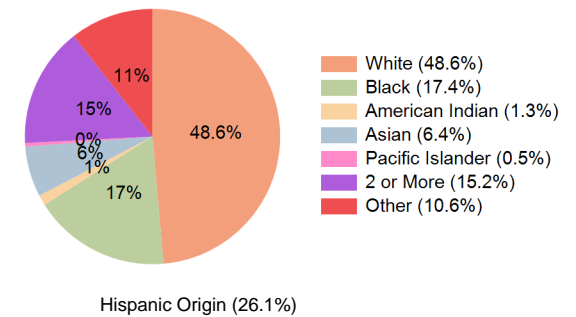
Education (10 Minute Drive)



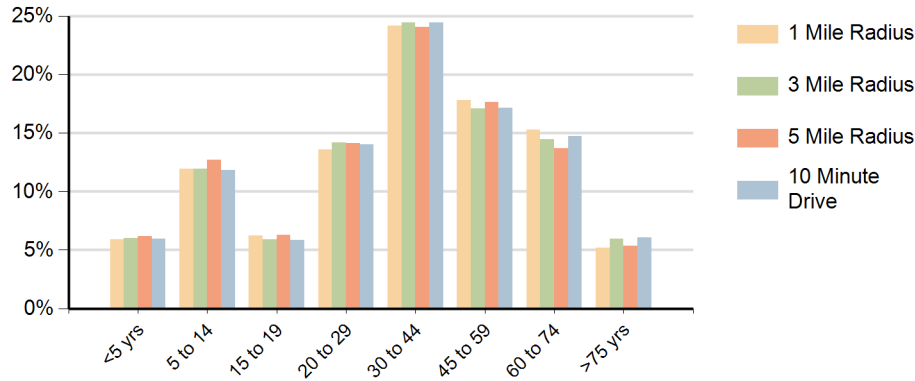
Daytime Population (10 Minute Drive)



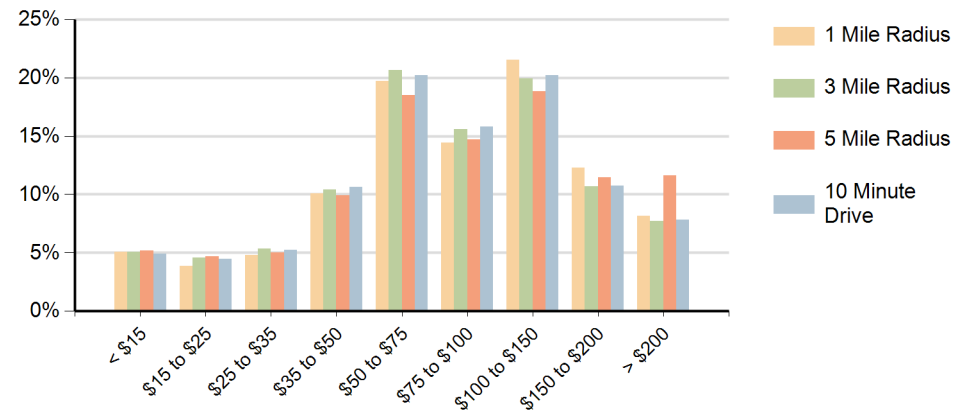
Race (10 Minute Drive)



Population by Age Range



Households by Income Range (\$000)



Buckley Square Aurora, Colorado		1 Mile Radius	3 Mile Radius	5 Mile Radius	10 Minute Drive
Population	Current Estimated Population	19,461	163,296	341,016	164,824
	2020 Census Population	19,651	162,749	337,035	164,921
	2010 Census Population	18,689	149,990	303,455	151,732
	Historical Annual Growth 2010 to 2020	0.5%	0.8%	1.1%	0.8%
	Estimated Annual Growth 2020 to 2024	-0.2%	0.1%	0.3%	0.0%
	Projected Annual Growth 2024 to 2029	-0.1%	0.1%	0.2%	0.1%
Households	Current Estimated Households	6,940	62,715	127,118	63,569
	2020 Census Households	6,902	61,971	125,028	63,029
	2010 Census Households	6,686	58,441	115,866	59,534
	Historical Annual Growth 2010 to 2020	0.3%	0.6%	0.8%	0.6%
	Estimated Annual Growth 2020 to 2024	0.1%	0.3%	0.4%	0.2%
	Projected Annual Growth 2024 to 2029	0.0%	0.2%	0.3%	0.2%
Population per Household		2.8	2.6	2.7	2.6
Race	White	48.6%	48.0%	47.7%	48.6%
	Black or African American	15.8%	17.5%	16.7%	17.4%
	American Indian	1.3%	1.3%	1.3%	1.3%
	Asian	6.1%	6.4%	7.3%	6.4%
	Pacific Islander	0.5%	0.5%	0.5%	0.5%
	2 or More Races	15.8%	15.4%	15.1%	15.2%
	Other Races	12.0%	10.9%	11.4%	10.6%
	Hispanic Origin	28.8%	26.7%	27.1%	26.1%