

Alden Bridge Village Center
The Woodlands, Texas

1 Mile Radius

3 Mile Radius

5 Mile Radius

10 Minute Drive

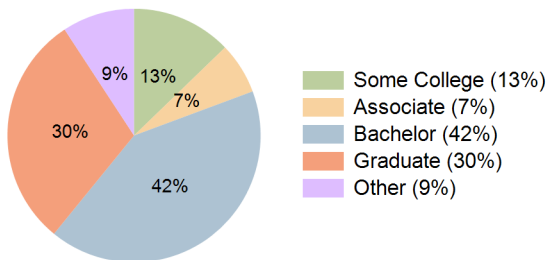
Current Year Demographics

Current Population	12,007	67,345	155,274	59,479
Total Daytime Pop	10,295	59,766	157,954	57,131
Daytime Workers	3,843	23,158	73,124	25,041
Average Household Income	\$167,906	\$186,956	\$180,347	\$188,999
Median Household Income	\$122,285	\$134,529	\$130,898	\$133,752
Total Households	4,508	24,881	58,192	22,328
Median Home Value	\$467,114	\$485,022	\$491,552	\$486,812
Bachelors Degree	38.3%	40.1%	38.3%	41.6%
Graduate Degree	30.8%	28.8%	26.3%	29.9%
Consumer Spending Index	140	157	152	158

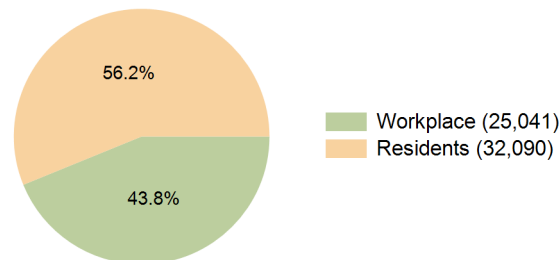
2030 Demographic Projections

Projected Population	12,683	71,836	167,652	62,873
Projected 5 Year Annual Growth Rate (Pop)	1.1%	1.3%	1.6%	1.1%
Projected Households	4,852	27,020	63,877	24,035
Projected 5 Year Annual Growth Rate (HH)	1.5%	1.7%	1.9%	1.5%

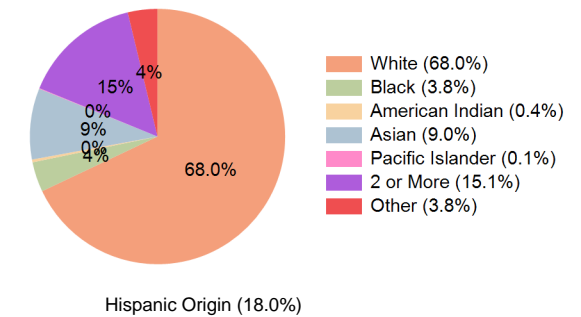
Education (10 Minute Drive)



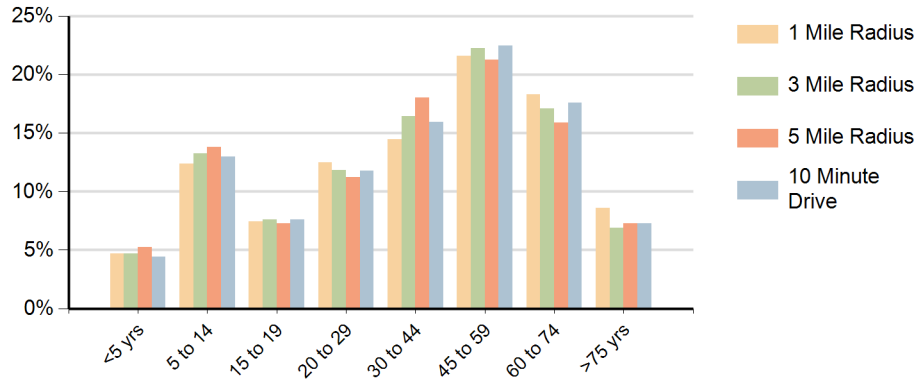
Daytime Population (10 Minute Drive)



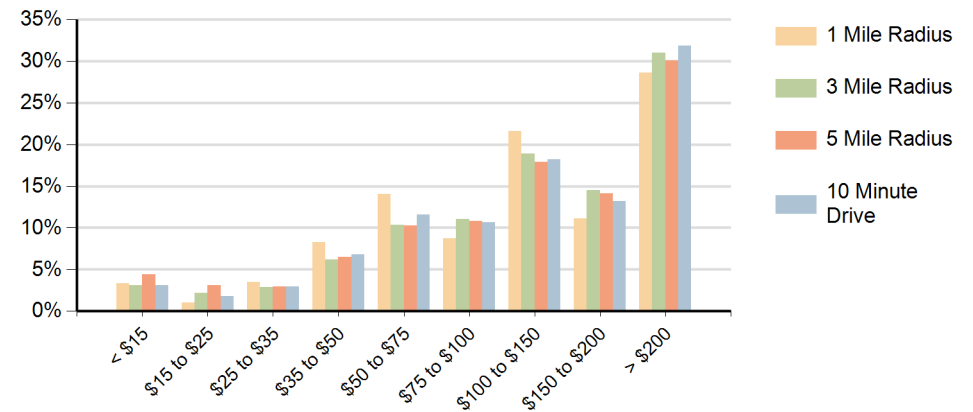
Race (10 Minute Drive)



Population by Age Range



Households by Income Range (\$000)



Alden Bridge Village Center The Woodlands, Texas		1 Mile Radius	3 Mile Radius	5 Mile Radius	10 Minute Drive
Population	Current Estimated Population	12,007	67,345	155,274	59,479
	2020 Census Population	11,549	63,156	139,047	58,901
	2010 Census Population	11,261	55,040	100,534	53,470
	Historical Annual Growth 2010 to 2020	0.3%	1.4%	3.3%	1.0%
	Estimated Annual Growth 2020 to 2025	0.7%	1.2%	2.1%	0.2%
	Projected Annual Growth 2025 to 2030	1.1%	1.3%	1.6%	1.1%
Households	Current Estimated Households	4,508	24,881	58,192	22,328
	2020 Census Households	4,176	22,772	50,870	21,545
	2010 Census Households	4,010	19,204	36,907	19,037
	Historical Annual Growth 2010 to 2020	0.4%	1.7%	3.3%	1.3%
	Estimated Annual Growth 2020 to 2025	1.5%	1.7%	2.6%	0.7%
	Projected Annual Growth 2025 to 2030	1.5%	1.7%	1.9%	1.5%
Population per Household		2.7	2.7	2.7	2.7
Race	White	69.3%	68.1%	66.3%	68.0%
	Black or African American	3.3%	4.1%	5.1%	3.8%
	American Indian	0.4%	0.3%	0.4%	0.4%
	Asian	8.0%	8.7%	8.1%	9.0%
	Pacific Islander	0.1%	0.1%	0.1%	0.1%
	2 or More Races	15.3%	14.9%	15.6%	15.1%
	Other Races	3.5%	3.8%	4.5%	3.8%
	Hispanic Origin	17.2%	18.0%	19.7%	18.0%