

Willa Springs Winter Springs, Florida	1 Mile Radius	3 Mile Radius	5 Mile Radius	10 Minute Drive
--	---------------	---------------	---------------	-----------------

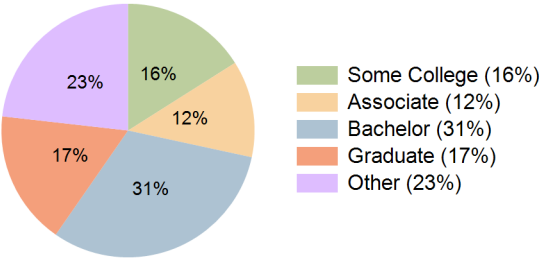
Current Year Demographics

Current Population	11,562	78,258	235,974	104,924
Total Daytime Pop	10,384	57,778	203,219	83,244
Daytime Workers	5,866	23,699	98,992	37,595
Average Household Income	\$127,233	\$121,754	\$113,013	\$114,263
Median Household Income	\$103,829	\$88,238	\$78,984	\$81,906
Total Households	4,363	30,402	93,976	42,166
Median Home Value	\$450,913	\$451,817	\$428,887	\$437,032
Bachelors Degree	32.3%	33.1%	30.3%	31.3%
Graduate Degree	17.8%	18.2%	17.1%	17.1%
Consumer Spending Index	111	107	100	101

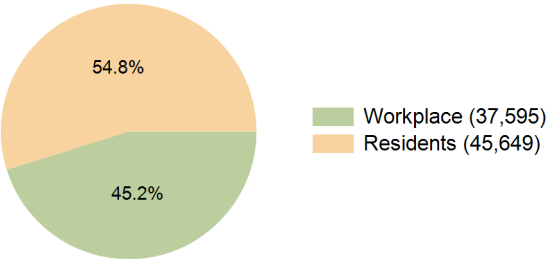
2029 Demographic Projections

Projected Population	11,692	79,053	238,513	105,826
Projected 5 Year Annual Growth Rate (Pop)	0.2%	0.2%	0.2%	0.2%
Projected Households	4,509	31,331	96,379	43,373
Projected 5 Year Annual Growth Rate (HH)	0.7%	0.6%	0.5%	0.6%

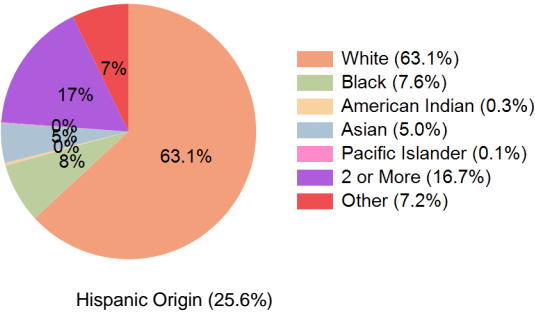
Education (10 Minute Drive)



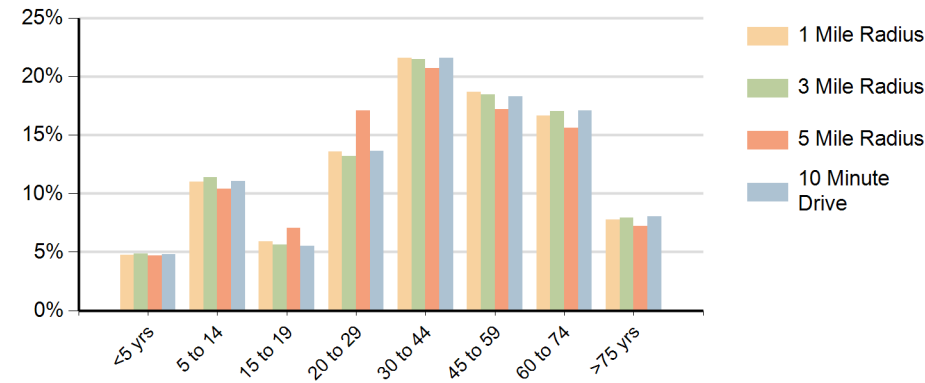
Daytime Population (10 Minute Drive)



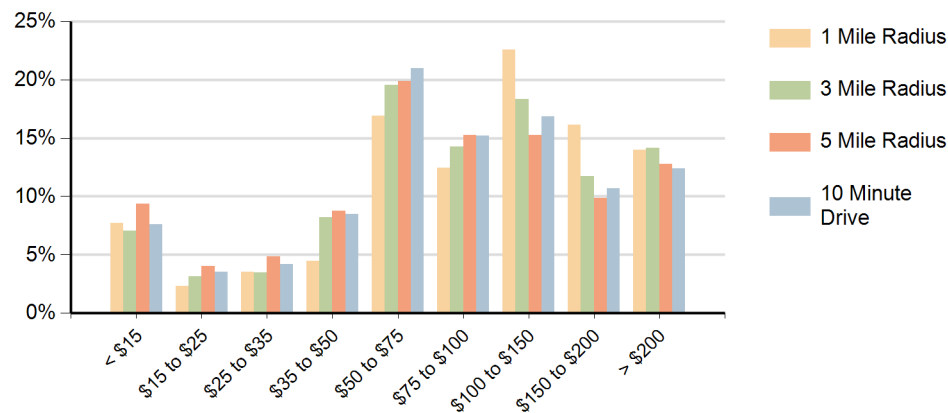
Race (10 Minute Drive)



Population by Age Range



Households by Income Range (\$000)



Willa Springs Winter Springs, Florida		1 Mile Radius	3 Mile Radius	5 Mile Radius	10 Minute Drive
Population	Current Estimated Population	11,562	78,258	235,974	104,924
	2020 Census Population	11,444	75,053	230,159	101,358
	2010 Census Population	11,119	68,897	206,070	91,923
	Historical Annual Growth 2010 to 2020	0.3%	0.9%	1.1%	1.0%
	Estimated Annual Growth 2020 to 2024	0.2%	1.0%	0.6%	0.8%
	Projected Annual Growth 2024 to 2029	0.2%	0.2%	0.2%	0.2%
Households	Current Estimated Households	4,363	30,402	93,976	42,166
	2020 Census Households	4,309	28,806	90,793	40,077
	2010 Census Households	4,275	26,637	82,535	36,686
	Historical Annual Growth 2010 to 2020	0.1%	0.8%	1.0%	0.9%
	Estimated Annual Growth 2020 to 2024	0.3%	1.3%	0.8%	1.2%
	Projected Annual Growth 2024 to 2029	0.7%	0.6%	0.5%	0.6%
Race	Population per Household	2.6	2.6	2.4	2.5
	White	62.9%	64.5%	61.0%	63.1%
	Black or African American	7.0%	6.7%	8.7%	7.6%
	American Indian	0.2%	0.3%	0.4%	0.3%
	Asian	5.4%	5.6%	5.6%	5.0%
	Pacific Islander	0.1%	0.1%	0.1%	0.1%
	2 or More Races	18.1%	16.2%	16.5%	16.7%
	Other Races	6.3%	6.6%	7.8%	7.2%
Hispanic Origin		26.0%	24.4%	26.6%	25.6%