

Corral Hollow  
Tracy, California

1 Mile Radius

3 Mile Radius

5 Mile Radius

10 Minute Drive

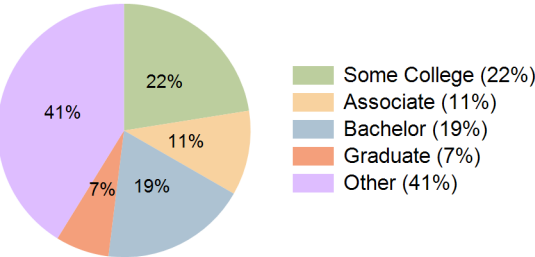
Current Year Demographics

Current Population	22,962	91,947	106,770	95,492
Total Daytime Pop	17,602	80,202	95,806	81,578
Daytime Workers	6,361	33,570	41,305	33,293
Average Household Income	\$146,549	\$142,491	\$151,753	\$143,533
Median Household Income	\$117,566	\$113,223	\$119,048	\$114,062
Total Households	6,682	27,666	32,106	28,749
Median Home Value	\$625,734	\$638,470	\$657,473	\$640,830
Bachelors Degree	18.6%	18.5%	20.0%	18.7%
Graduate Degree	5.2%	6.8%	7.6%	6.9%
Consumer Spending Index	127	123	131	124

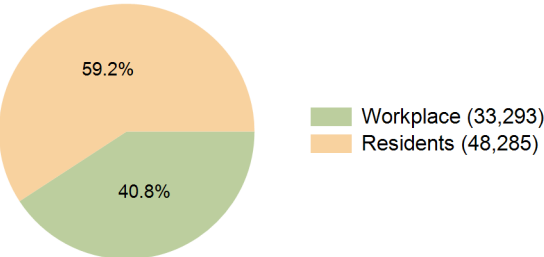
2029 Demographic Projections

Projected Population	23,279	95,564	110,956	99,235
Projected 5 Year Annual Growth Rate (Pop)	0.3%	0.8%	0.8%	0.8%
Projected Households	6,791	28,831	33,454	29,956
Projected 5 Year Annual Growth Rate (HH)	0.3%	0.8%	0.8%	0.8%

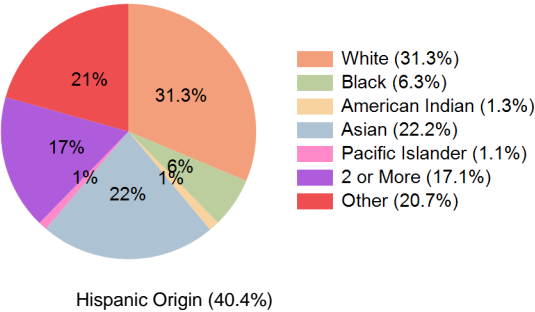
Education (10 Minute Drive)



Daytime Population (10 Minute Drive)

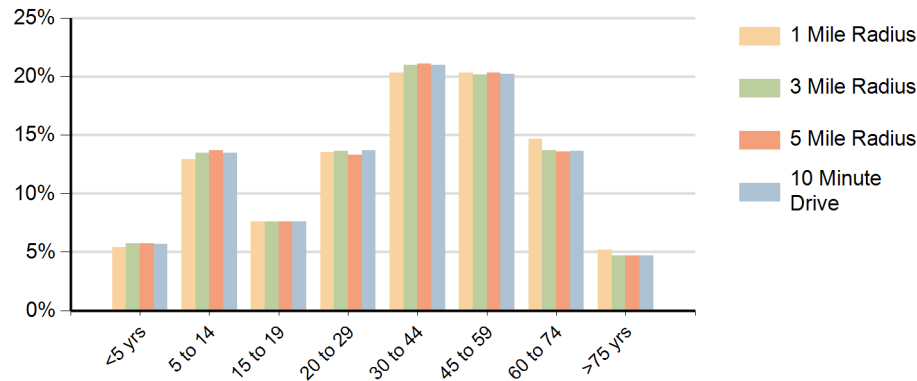


Race (10 Minute Drive)

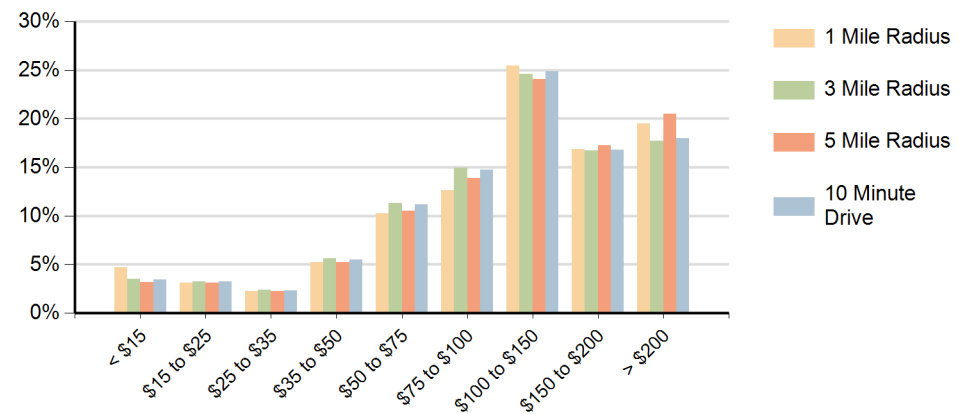


Hispanic Origin (40.4%)

### Population by Age Range



### Households by Income Range (\$000)



Corral Hollow Tracy, California		1 Mile Radius	3 Mile Radius	5 Mile Radius	10 Minute Drive
Population	Current Estimated Population	22,962	91,947	106,770	95,492
	2020 Census Population	22,944	89,632	100,388	93,127
	2010 Census Population	21,646	81,017	89,251	84,087
	Historical Annual Growth 2010 to 2020	0.6%	1.0%	1.2%	1.0%
	Estimated Annual Growth 2020 to 2024	0.0%	0.6%	1.5%	0.6%
	Projected Annual Growth 2024 to 2029	0.3%	0.8%	0.8%	0.8%
Households	Current Estimated Households	6,682	27,666	32,106	28,749
	2020 Census Households	6,673	26,762	29,935	27,823
	2010 Census Households	6,290	23,957	26,330	24,847
	Historical Annual Growth 2010 to 2020	0.6%	1.1%	1.3%	1.1%
	Estimated Annual Growth 2020 to 2024	0.0%	0.8%	1.7%	0.8%
	Projected Annual Growth 2024 to 2029	0.3%	0.8%	0.8%	0.8%
Race	Population per Household	3.4	3.3	3.3	3.3
	White	31.0%	31.2%	31.5%	31.3%
	Black or African American	6.2%	6.3%	6.2%	6.3%
	American Indian	1.5%	1.4%	1.3%	1.3%
	Asian	24.2%	22.0%	23.3%	22.2%
	Pacific Islander	1.4%	1.1%	1.0%	1.1%
	2 or More Races	16.2%	17.1%	16.9%	17.1%
	Other Races	19.6%	21.0%	19.8%	20.7%
Hispanic Origin		39.2%	40.9%	39.1%	40.4%