

**Cedar Commons**  
Minneapolis, Minnesota

**1 Mile Radius**

**3 Mile Radius**

**5 Mile Radius**

**10 Minute Drive**

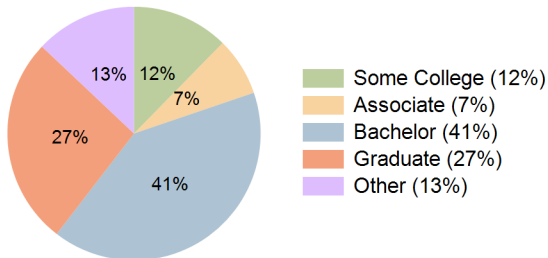
### Current Year Demographics

Current Population	14,464	185,978	473,178	141,668
Total Daytime Pop	11,441	202,045	601,394	142,309
Daytime Workers	7,214	134,499	405,558	92,542
Average Household Income	\$154,601	\$131,196	\$126,220	\$141,627
Median Household Income	\$101,241	\$85,350	\$84,035	\$91,819
Total Households	8,013	90,399	213,721	69,931
Median Home Value	\$645,395	\$501,473	\$441,255	\$531,958
Bachelors Degree	45.6%	38.4%	35.3%	40.7%
Graduate Degree	31.7%	24.7%	23.3%	26.6%
Consumer Spending Index	135	116	112	125

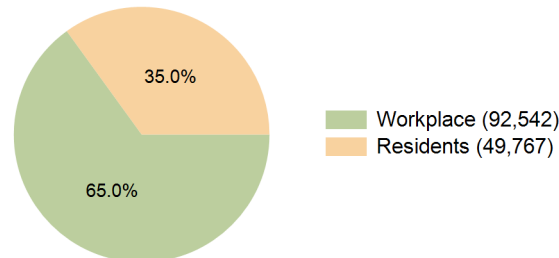
### 2029 Demographic Projections

Projected Population	15,478	188,677	481,449	146,821
Projected 5 Year Annual Growth Rate (Pop)	1.4%	0.3%	0.4%	0.7%
Projected Households	8,796	93,289	221,414	73,528
Projected 5 Year Annual Growth Rate (HH)	1.9%	0.6%	0.7%	1.0%

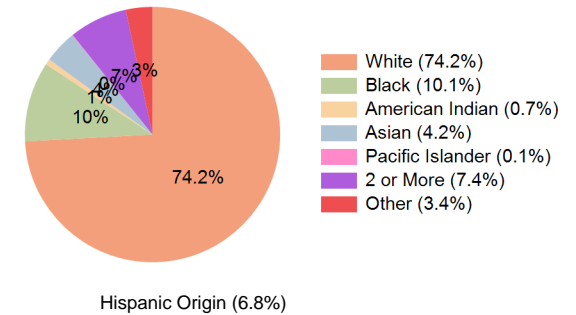
**Education (10 Minute Drive)**



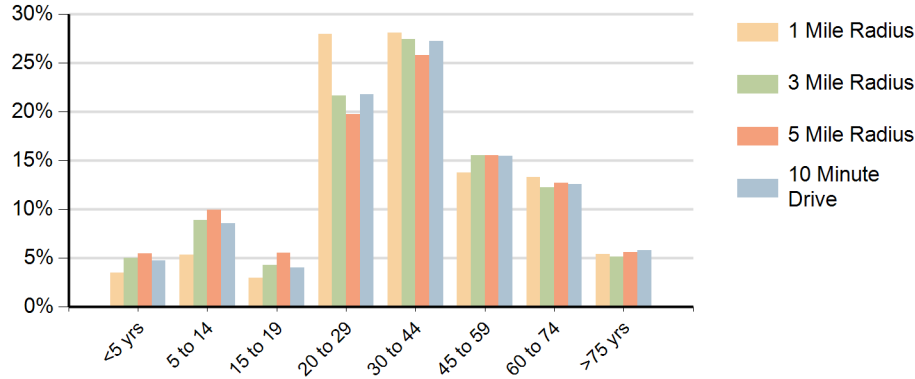
**Daytime Population (10 Minute Drive)**



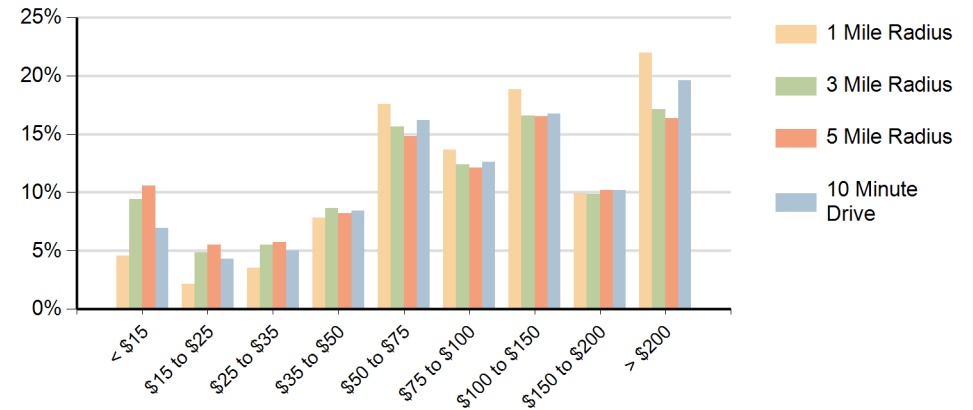
**Race (10 Minute Drive)**



## Population by Age Range



## Households by Income Range (\$000)



Cedar Commons Minneapolis, Minnesota		1 Mile Radius	3 Mile Radius	5 Mile Radius	10 Minute Drive
Population	Current Estimated Population	14,464	185,978	473,178	141,668
	2020 Census Population	13,992	184,273	471,262	140,819
	2010 Census Population	11,993	168,344	420,795	128,199
	Historical Annual Growth 2010 to 2020	1.6%	0.9%	1.1%	0.9%
	Estimated Annual Growth 2020 to 2024	0.8%	0.2%	0.1%	0.1%
	Projected Annual Growth 2024 to 2029	1.4%	0.3%	0.4%	0.7%
Households	Current Estimated Households	8,013	90,399	213,721	69,931
	2020 Census Households	7,679	88,427	209,445	68,476
	2010 Census Households	6,532	80,272	184,379	62,491
	Historical Annual Growth 2010 to 2020	1.6%	1.0%	1.3%	0.9%
	Estimated Annual Growth 2020 to 2024	1.0%	0.5%	0.5%	0.5%
	Projected Annual Growth 2024 to 2029	1.9%	0.6%	0.7%	1.0%
Population per Household		1.8	2.0	2.1	2.0
Race	White	82.2%	66.9%	62.9%	74.2%
	Black or African American	5.2%	14.5%	17.2%	10.1%
	American Indian	0.5%	1.2%	1.5%	0.7%
	Asian	4.3%	4.0%	5.3%	4.2%
	Pacific Islander	0.0%	0.1%	0.0%	0.1%
	2 or More Races	6.2%	7.9%	7.8%	7.4%
	Other Races	1.7%	5.5%	5.3%	3.4%
	Hispanic Origin	4.4%	9.8%	9.6%	6.8%