

**Woodman Van Nuys**  
Arleta, California

**1 Mile Radius**

**3 Mile Radius**

**5 Mile Radius**

**10 Minute Drive**

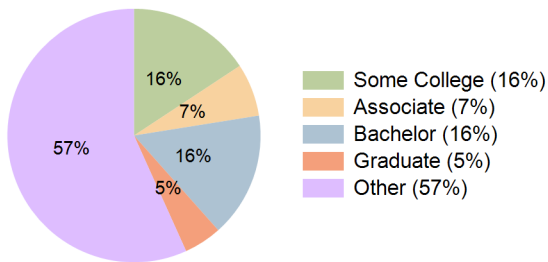
### Current Year Demographics

Current Population	40,527	285,376	662,476	268,346
Total Daytime Pop	25,258	230,723	571,273	208,373
Daytime Workers	4,243	77,940	221,192	64,587
Average Household Income	\$109,175	\$101,579	\$104,661	\$103,714
Median Household Income	\$86,785	\$76,655	\$76,387	\$78,727
Total Households	10,536	78,629	199,078	73,434
Median Home Value	\$660,825	\$676,387	\$730,020	\$680,549
Bachelors Degree	15.0%	15.6%	18.5%	15.9%
Graduate Degree	4.6%	4.7%	6.7%	4.8%
Consumer Spending Index	96	89	92	91

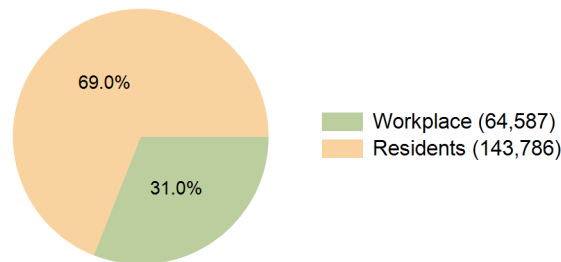
### 2029 Demographic Projections

Projected Population	39,561	280,445	652,222	262,992
Projected 5 Year Annual Growth Rate (Pop)	-0.5%	-0.4%	-0.3%	-0.4%
Projected Households	10,575	79,574	201,916	74,077
Projected 5 Year Annual Growth Rate (HH)	0.1%	0.2%	0.3%	0.2%

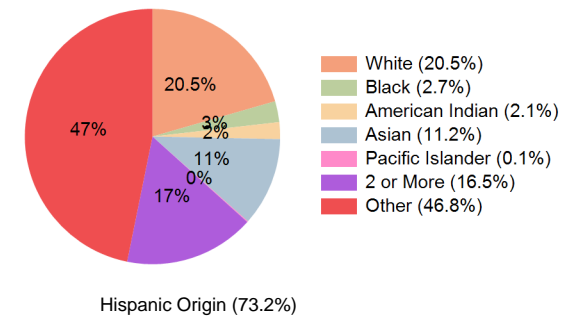
**Education (10 Minute Drive)**



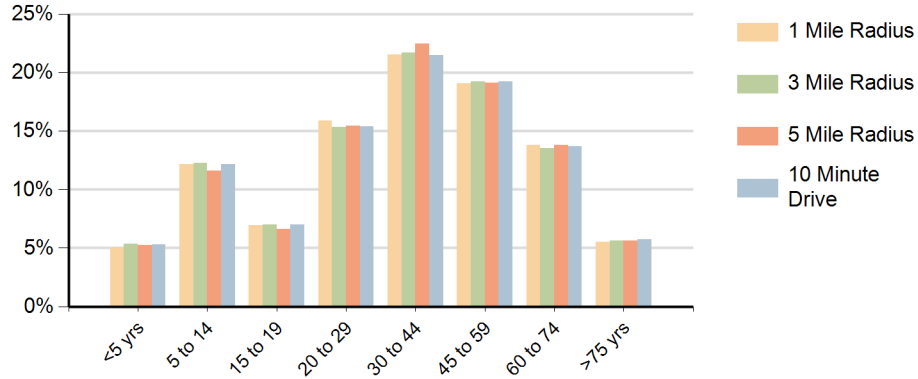
**Daytime Population (10 Minute Drive)**



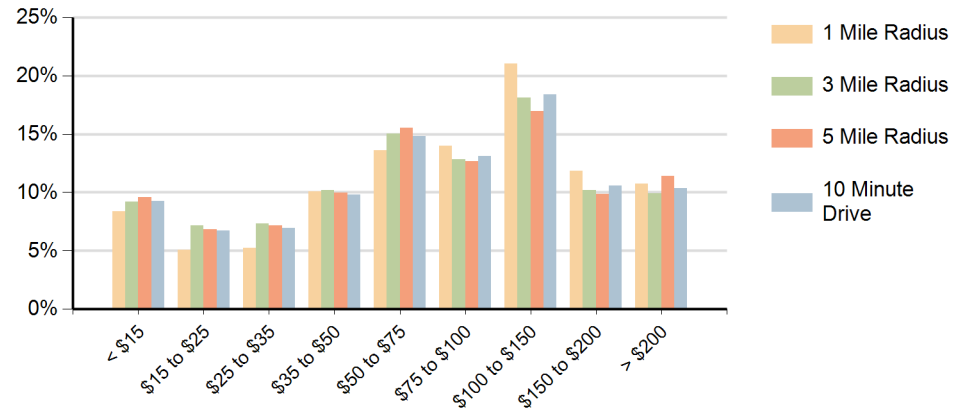
**Race (10 Minute Drive)**



## Population by Age Range



## Households by Income Range (\$000)



Woodman Van Nuys Arleta, California		1 Mile Radius	3 Mile Radius	5 Mile Radius	10 Minute Drive
Population	Current Estimated Population	40,527	285,376	662,476	268,346
	2020 Census Population	41,513	294,515	681,581	276,860
	2010 Census Population	42,149	293,797	674,167	276,868
	Historical Annual Growth 2010 to 2020	-0.2%	0.0%	0.1%	0.0%
	Estimated Annual Growth 2020 to 2024	-0.6%	-0.7%	-0.7%	-0.7%
	Projected Annual Growth 2024 to 2029	-0.5%	-0.4%	-0.3%	-0.4%
Households	Current Estimated Households	10,536	78,629	199,078	73,434
	2020 Census Households	10,558	78,491	198,215	73,331
	2010 Census Households	10,156	74,114	186,827	69,761
	Historical Annual Growth 2010 to 2020	0.4%	0.6%	0.6%	0.5%
	Estimated Annual Growth 2020 to 2024	-0.1%	0.0%	0.1%	0.0%
	Projected Annual Growth 2024 to 2029	0.1%	0.2%	0.3%	0.2%
Population per Household		3.8	3.6	3.3	3.6
Race	White	16.3%	20.3%	26.6%	20.5%
	Black or African American	2.4%	2.9%	3.6%	2.7%
	American Indian	2.0%	2.2%	2.0%	2.1%
	Asian	12.4%	10.9%	9.7%	11.2%
	Pacific Islander	0.1%	0.1%	0.1%	0.1%
	2 or More Races	17.0%	16.3%	16.0%	16.5%
	Other Races	49.8%	47.3%	41.9%	46.8%
	Hispanic Origin	76.3%	73.6%	66.3%	73.2%