

**Oakbrook Plaza**  
Thousand Oaks, California

**1 Mile Radius**

**3 Mile Radius**

**5 Mile Radius**

**10 Minute Drive**

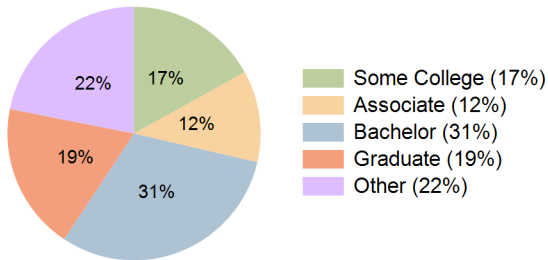
### Current Year Demographics

Current Population	12,454	71,330	152,366	91,456
Total Daytime Pop	9,053	66,654	171,451	108,656
Daytime Workers	2,787	29,849	92,947	61,781
Average Household Income	\$173,737	\$177,999	\$188,695	\$170,471
Median Household Income	\$129,213	\$130,702	\$138,986	\$124,400
Total Households	4,352	26,039	57,131	33,559
Median Home Value	\$896,313	\$927,839	\$938,184	\$902,185
Bachelors Degree	29.6%	30.3%	32.3%	30.7%
Graduate Degree	19.7%	20.2%	21.3%	18.8%
Consumer Spending Index	149	153	162	147

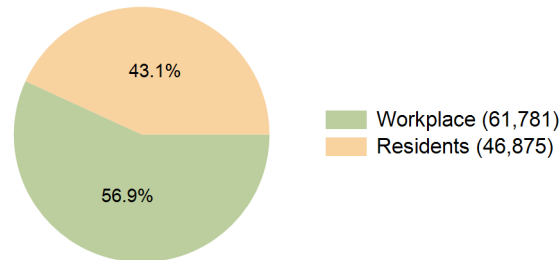
### 2029 Demographic Projections

Projected Population	12,218	70,272	150,321	90,815
Projected 5 Year Annual Growth Rate (Pop)	-0.4%	-0.3%	-0.3%	-0.1%
Projected Households	4,335	25,998	57,154	33,791
Projected 5 Year Annual Growth Rate (HH)	-0.1%	0.0%	0.0%	0.1%

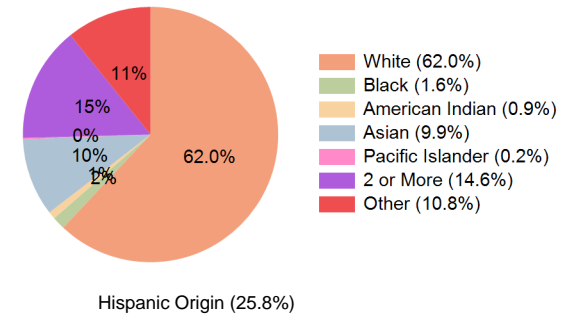
**Education (10 Minute Drive)**



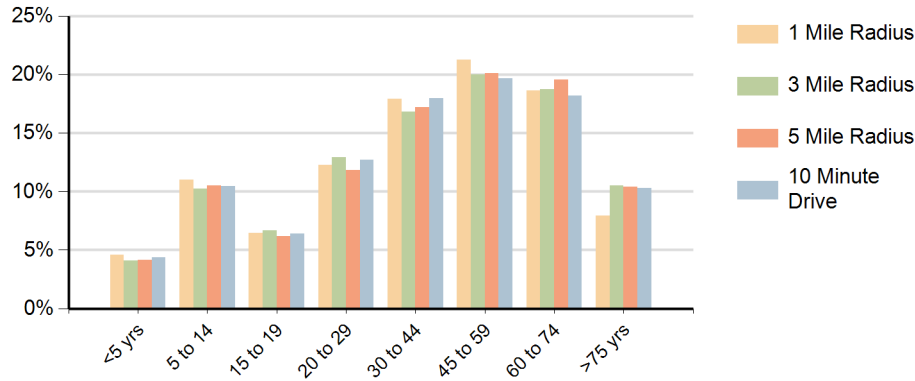
**Daytime Population (10 Minute Drive)**



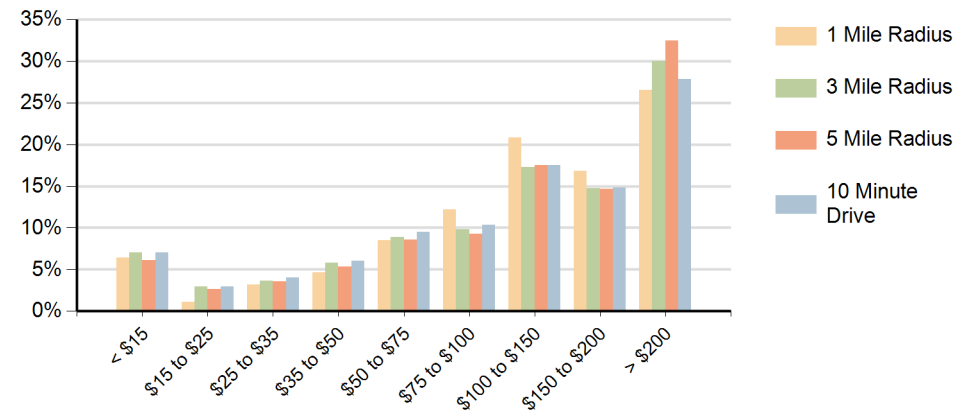
**Race (10 Minute Drive)**



## Population by Age Range



## Households by Income Range (\$000)



Oakbrook Plaza Thousand Oaks, California		1 Mile Radius	3 Mile Radius	5 Mile Radius	10 Minute Drive
Population	Current Estimated Population	12,454	71,330	152,366	91,456
	2020 Census Population	12,737	72,579	155,801	93,104
	2010 Census Population	12,942	72,054	155,621	92,106
	Historical Annual Growth 2010 to 2020	-0.2%	0.1%	0.0%	0.1%
	Estimated Annual Growth 2020 to 2024	-0.5%	-0.4%	-0.5%	-0.4%
	Projected Annual Growth 2024 to 2029	-0.4%	-0.3%	-0.3%	-0.1%
Households	Current Estimated Households	4,352	26,039	57,131	33,559
	2020 Census Households	4,415	26,255	57,858	33,846
	2010 Census Households	4,354	25,726	56,860	32,955
	Historical Annual Growth 2010 to 2020	0.1%	0.2%	0.2%	0.3%
	Estimated Annual Growth 2020 to 2024	-0.3%	-0.2%	-0.3%	-0.2%
	Projected Annual Growth 2024 to 2029	-0.1%	0.0%	0.0%	0.1%
Population per Household		2.9	2.7	2.6	2.7
Race	White	63.4%	63.8%	65.0%	62.0%
	Black or African American	1.6%	1.7%	1.6%	1.6%
	American Indian	0.8%	0.9%	0.8%	0.9%
	Asian	9.2%	9.8%	10.7%	9.9%
	Pacific Islander	0.1%	0.2%	0.1%	0.2%
	2 or More Races	15.4%	14.2%	13.5%	14.6%
	Other Races	9.4%	9.6%	8.3%	10.8%
	Hispanic Origin	25.5%	23.7%	21.3%	25.8%