

Heritage Plaza
Irvine, California

1 Mile Radius

3 Mile Radius

5 Mile Radius

10 Minute Drive

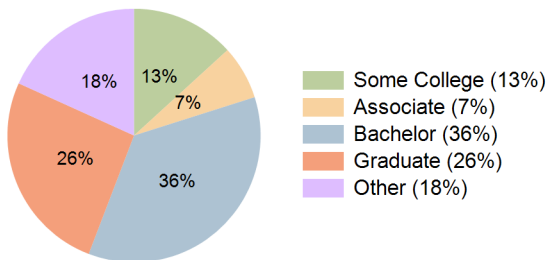
Current Year Demographics

Current Population	26,003	221,123	445,358	214,621
Total Daytime Pop	24,682	199,028	543,290	211,476
Daytime Workers	12,047	92,326	325,770	108,470
Average Household Income	\$175,113	\$175,233	\$167,726	\$163,508
Median Household Income	\$134,328	\$129,899	\$121,108	\$119,501
Total Households	8,852	79,178	158,741	76,149
Median Home Value	\$990,566	\$1,131,591	\$1,153,349	\$1,068,835
Bachelors Degree	40.2%	38.6%	35.9%	35.7%
Graduate Degree	25.9%	30.1%	26.2%	25.9%
Consumer Spending Index	150	151	146	142

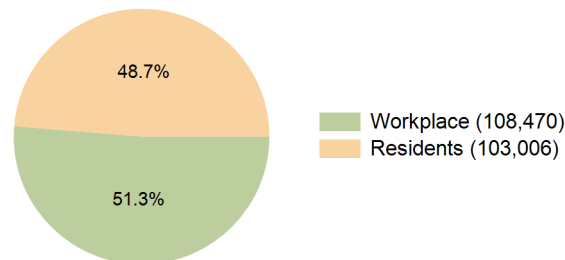
2029 Demographic Projections

Projected Population	26,004	223,121	456,131	217,576
Projected 5 Year Annual Growth Rate (Pop)	0.0%	0.2%	0.5%	0.3%
Projected Households	9,115	82,223	168,370	79,571
Projected 5 Year Annual Growth Rate (HH)	0.6%	0.8%	1.2%	0.9%

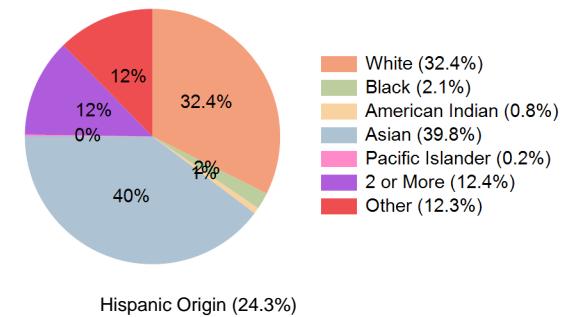
Education (10 Minute Drive)



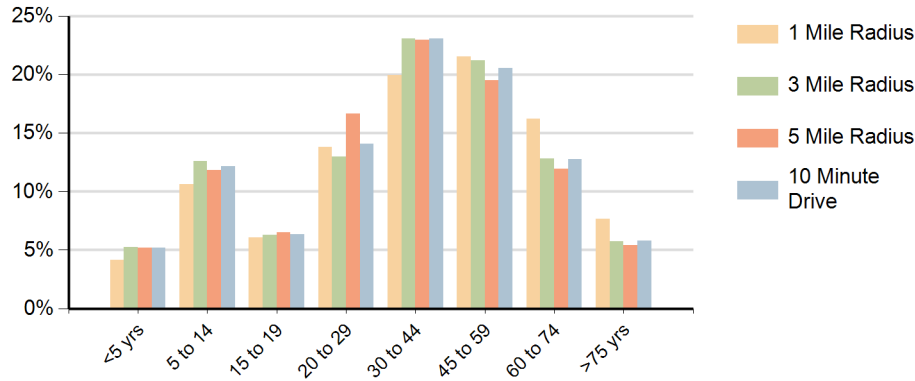
Daytime Population (10 Minute Drive)



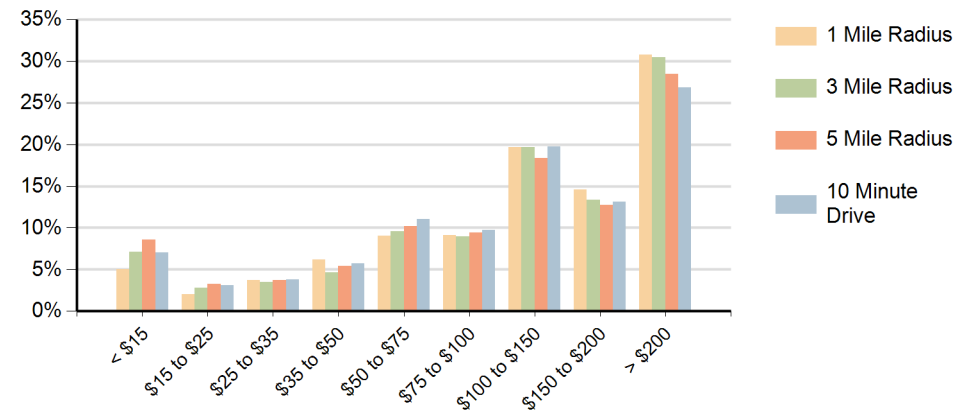
Race (10 Minute Drive)



Population by Age Range



Households by Income Range (\$000)



Heritage Plaza Irvine, California		1 Mile Radius	3 Mile Radius	5 Mile Radius	10 Minute Drive
Population	Current Estimated Population	26,003	221,123	445,358	214,621
	2020 Census Population	26,323	221,101	430,520	214,355
	2010 Census Population	26,924	176,309	341,046	185,084
	Historical Annual Growth 2010 to 2020	-0.2%	2.3%	2.4%	1.5%
	Estimated Annual Growth 2020 to 2024	-0.3%	0.0%	0.8%	0.0%
	Projected Annual Growth 2024 to 2029	0.0%	0.2%	0.5%	0.3%
Households	Current Estimated Households	8,852	79,178	158,741	76,149
	2020 Census Households	8,774	78,299	150,752	74,954
	2010 Census Households	9,040	63,715	118,136	64,245
	Historical Annual Growth 2010 to 2020	-0.3%	2.1%	2.5%	1.6%
	Estimated Annual Growth 2020 to 2024	0.2%	0.3%	1.2%	0.4%
	Projected Annual Growth 2024 to 2029	0.6%	0.8%	1.2%	0.9%
Population per Household		2.9	2.8	2.8	2.8
Race	White	31.7%	33.1%	33.8%	32.4%
	Black or African American	1.8%	2.0%	2.0%	2.1%
	American Indian	0.4%	0.4%	0.9%	0.8%
	Asian	50.0%	46.8%	38.5%	39.8%
	Pacific Islander	0.2%	0.2%	0.2%	0.2%
	2 or More Races	11.3%	10.9%	12.1%	12.4%
	Other Races	4.5%	6.6%	12.5%	12.3%
	Hispanic Origin	12.2%	15.4%	24.6%	24.3%