

Rona Plaza
Santa Ana, California

1 Mile Radius

3 Mile Radius

5 Mile Radius

10 Minute Drive

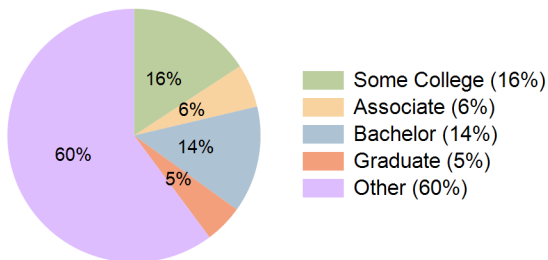
Current Year Demographics

| | | | | |
|--------------------------|-----------|-----------|-----------|-----------|
| Current Population | 48,183 | 337,708 | 704,055 | 274,536 |
| Total Daytime Pop | 31,275 | 284,916 | 762,531 | 210,216 |
| Daytime Workers | 6,318 | 113,392 | 412,968 | 68,389 |
| Average Household Income | \$108,611 | \$113,359 | \$120,070 | \$112,655 |
| Median Household Income | \$82,990 | \$86,174 | \$91,111 | \$85,352 |
| Total Households | 10,144 | 84,346 | 203,954 | 66,706 |
| Median Home Value | \$567,150 | \$708,521 | \$814,817 | \$694,528 |
| Bachelors Degree | 9.1% | 14.6% | 20.2% | 13.6% |
| Graduate Degree | 3.6% | 5.6% | 8.4% | 4.9% |
| Consumer Spending Index | 96 | 100 | 105 | 99 |

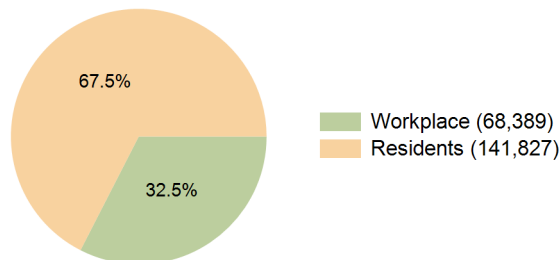
2029 Demographic Projections

| | | | | |
|---|--------|---------|---------|---------|
| Projected Population | 47,814 | 335,618 | 704,971 | 273,031 |
| Projected 5 Year Annual Growth Rate (Pop) | -0.2% | -0.1% | 0.0% | -0.1% |
| Projected Households | 10,372 | 86,703 | 211,066 | 68,558 |
| Projected 5 Year Annual Growth Rate (HH) | 0.5% | 0.6% | 0.7% | 0.6% |

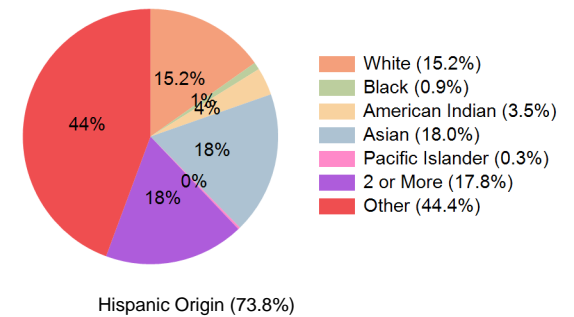
Education (10 Minute Drive)



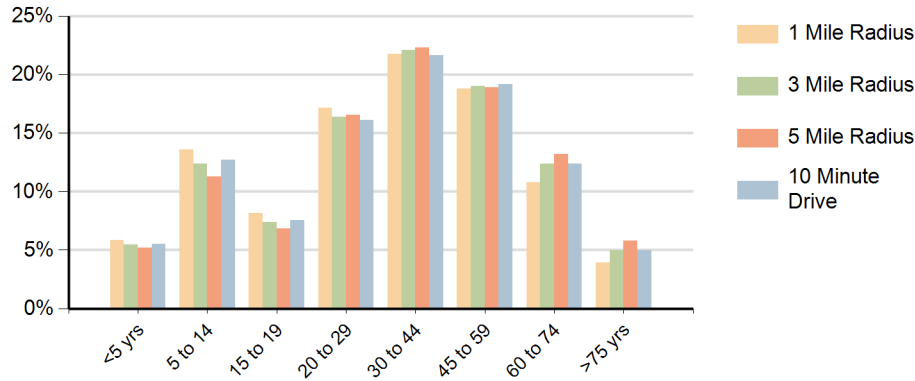
Daytime Population (10 Minute Drive)



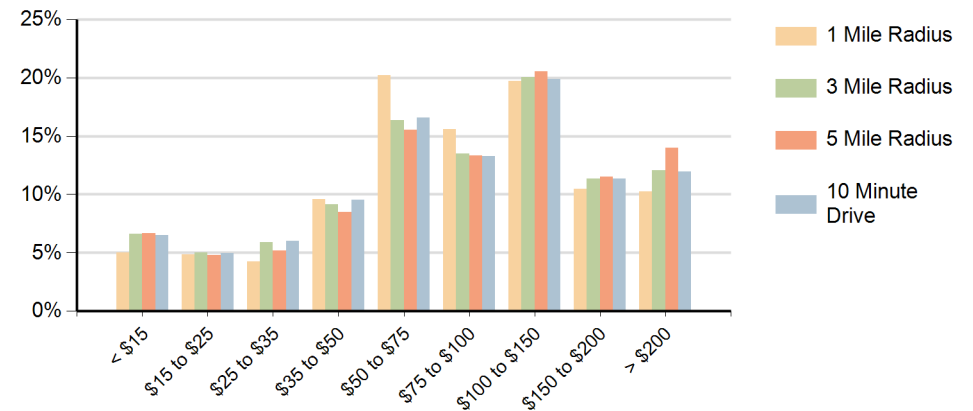
Race (10 Minute Drive)



Population by Age Range



Households by Income Range (\$000)



| Rona Plaza Santa Ana, California | | 1 Mile Radius | 3 Mile Radius | 5 Mile Radius | 10 Minute Drive |
|-------------------------------------|---------------------------------------|---------------|---------------|---------------|-----------------|
| Population | Current Estimated Population | 48,183 | 337,708 | 704,055 | 274,536 |
| | 2020 Census Population | 50,258 | 345,105 | 710,143 | 281,752 |
| | 2010 Census Population | 53,029 | 360,224 | 709,104 | 296,828 |
| | Historical Annual Growth 2010 to 2020 | -0.5% | -0.4% | 0.0% | -0.5% |
| | Estimated Annual Growth 2020 to 2024 | -1.0% | -0.5% | -0.2% | -0.6% |
| | Projected Annual Growth 2024 to 2029 | -0.2% | -0.1% | 0.0% | -0.1% |
| Households | Current Estimated Households | 10,144 | 84,346 | 203,954 | 66,706 |
| | 2020 Census Households | 10,119 | 83,006 | 199,424 | 66,062 |
| | 2010 Census Households | 9,760 | 79,165 | 187,801 | 63,773 |
| | Historical Annual Growth 2010 to 2020 | 0.4% | 0.5% | 0.6% | 0.4% |
| | Estimated Annual Growth 2020 to 2024 | 0.1% | 0.4% | 0.5% | 0.2% |
| | Projected Annual Growth 2024 to 2029 | 0.5% | 0.6% | 0.7% | 0.6% |
| Population per Household | | 4.6 | 3.9 | 3.4 | 4.0 |
| Race | White | 14.9% | 16.5% | 23.4% | 15.2% |
| | Black or African American | 1.2% | 1.1% | 1.5% | 0.9% |
| | American Indian | 4.1% | 3.3% | 2.3% | 3.5% |
| | Asian | 7.0% | 18.1% | 24.2% | 18.0% |
| | Pacific Islander | 0.1% | 0.3% | 0.4% | 0.3% |
| | 2 or More Races | 18.1% | 17.6% | 15.7% | 17.8% |
| | Other Races | 54.6% | 43.3% | 32.5% | 44.4% |
| | Hispanic Origin | 88.0% | 72.0% | 55.9% | 73.8% |