

Murrayhill Marketplace  
Beaverton, Oregon

1 Mile Radius

3 Mile Radius

5 Mile Radius

10 Minute Drive

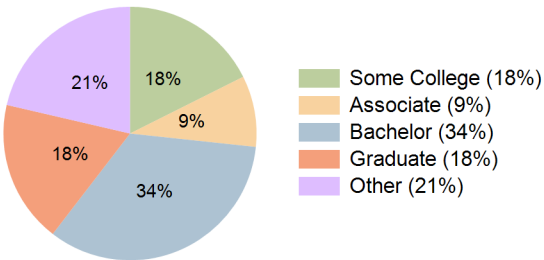
Current Year Demographics

Current Population	24,104	135,334	279,211	113,562
Total Daytime Pop	15,656	114,276	299,351	88,439
Daytime Workers	5,731	53,531	172,707	37,810
Average Household Income	\$138,834	\$139,677	\$136,189	\$142,526
Median Household Income	\$103,734	\$103,463	\$99,727	\$105,740
Total Households	10,229	52,961	110,717	43,687
Median Home Value	\$621,861	\$629,068	\$629,880	\$630,578
Bachelors Degree	41.0%	33.3%	31.6%	33.8%
Graduate Degree	19.0%	17.5%	17.3%	18.2%
Consumer Spending Index	122	122	119	124

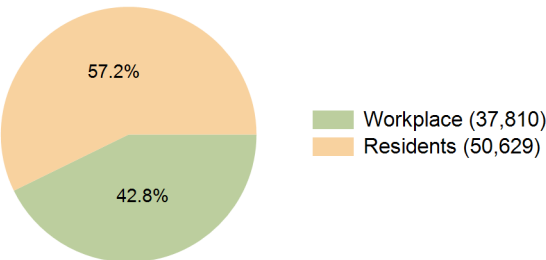
2029 Demographic Projections

Projected Population	24,452	138,070	285,815	115,677
Projected 5 Year Annual Growth Rate (Pop)	0.3%	0.4%	0.5%	0.4%
Projected Households	10,460	54,496	114,304	44,886
Projected 5 Year Annual Growth Rate (HH)	0.5%	0.6%	0.6%	0.5%

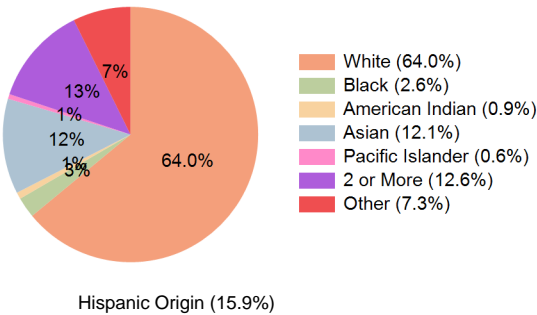
Education (10 Minute Drive)



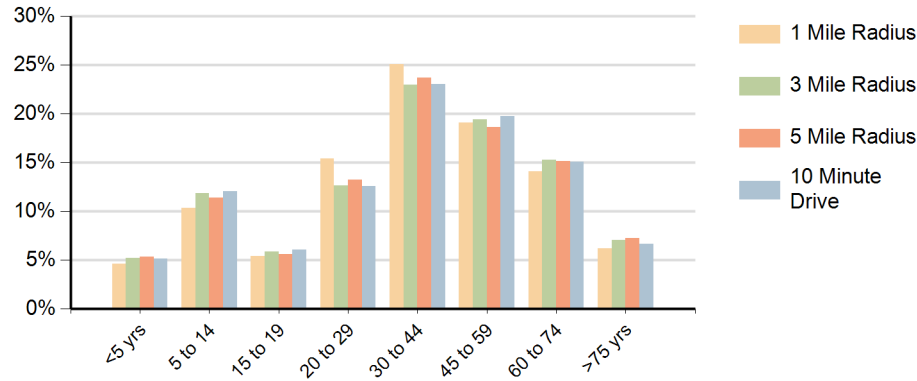
Daytime Population (10 Minute Drive)



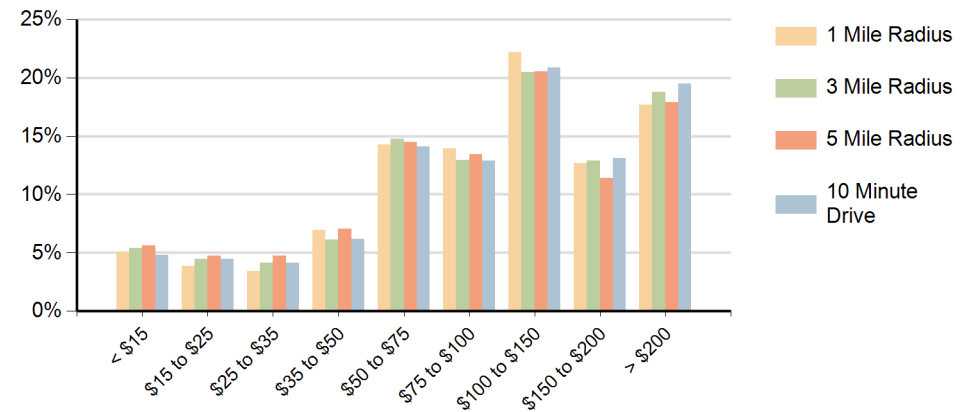
Race (10 Minute Drive)



### Population by Age Range



### Households by Income Range (\$000)



Murrayhill Marketplace Beaverton, Oregon		1 Mile Radius	3 Mile Radius	5 Mile Radius	10 Minute Drive
Population	Current Estimated Population	24,104	135,334	279,211	113,562
	2020 Census Population	23,979	132,134	272,491	110,766
	2010 Census Population	22,004	121,925	248,142	102,893
	Historical Annual Growth 2010 to 2020	0.9%	0.8%	0.9%	0.7%
	Estimated Annual Growth 2020 to 2024	0.1%	0.6%	0.6%	0.6%
	Projected Annual Growth 2024 to 2029	0.3%	0.4%	0.5%	0.4%
Households	Current Estimated Households	10,229	52,961	110,717	43,687
	2020 Census Households	10,100	51,450	107,542	42,379
	2010 Census Households	9,432	47,882	98,870	39,668
	Historical Annual Growth 2010 to 2020	0.7%	0.7%	0.8%	0.7%
	Estimated Annual Growth 2020 to 2024	0.3%	0.7%	0.7%	0.7%
	Projected Annual Growth 2024 to 2029	0.5%	0.6%	0.6%	0.5%
Race	Population per Household	2.3	2.5	2.5	2.6
	White	65.9%	64.6%	64.5%	64.0%
	Black or African American	2.7%	2.6%	2.8%	2.6%
	American Indian	0.5%	0.9%	1.0%	0.9%
	Asian	13.7%	11.5%	9.9%	12.1%
	Pacific Islander	0.6%	0.7%	0.7%	0.6%
	2 or More Races	12.4%	12.3%	12.5%	12.6%
	Other Races	4.1%	7.5%	8.6%	7.3%
Hispanic Origin		11.7%	15.9%	17.8%	15.9%