

Hancock Austin, Texas	1 Mile Radius	3 Mile Radius	5 Mile Radius	10 Minute Drive
--------------------------	---------------	---------------	---------------	-----------------

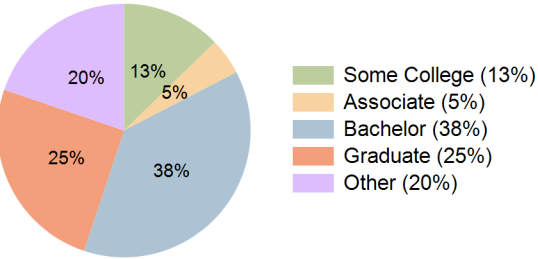
Current Year Demographics

Current Population	21,473	188,797	384,730	202,125
Total Daytime Pop	29,094	357,307	594,314	369,863
Daytime Workers	22,768	282,135	440,243	288,692
Average Household Income	\$131,584	\$137,703	\$135,941	\$126,188
Median Household Income	\$84,333	\$87,100	\$82,561	\$79,614
Total Households	11,471	87,411	175,028	92,608
Median Home Value	\$750,000	\$710,152	\$714,097	\$661,243
Bachelors Degree	46.2%	40.2%	38.1%	37.7%
Graduate Degree	33.9%	28.3%	24.6%	25.1%
Consumer Spending Index	116	122	121	112

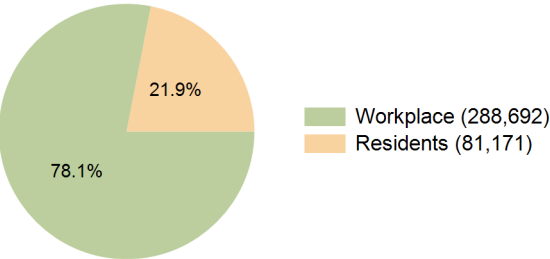
2029 Demographic Projections

Projected Population	21,474	198,130	399,635	212,088
Projected 5 Year Annual Growth Rate (Pop)	0.0%	1.0%	0.8%	1.0%
Projected Households	11,789	95,507	188,617	101,704
Projected 5 Year Annual Growth Rate (HH)	0.6%	1.8%	1.5%	1.9%

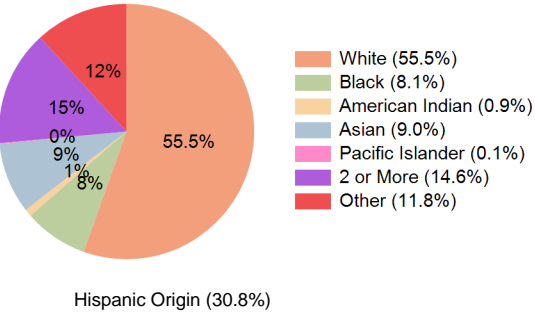
Education (10 Minute Drive)



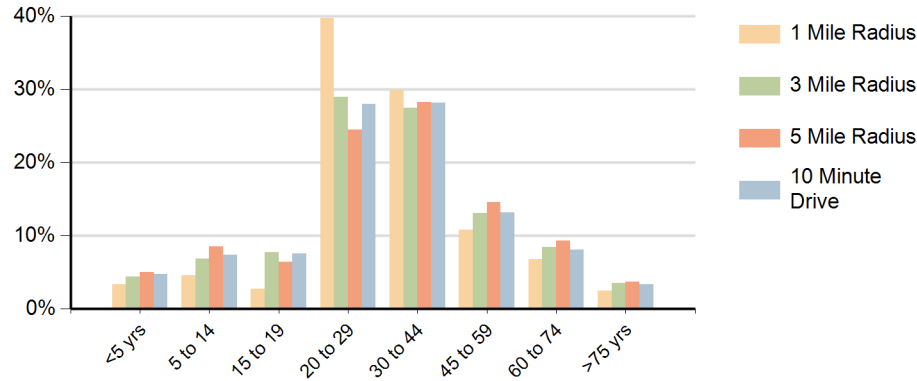
Daytime Population (10 Minute Drive)



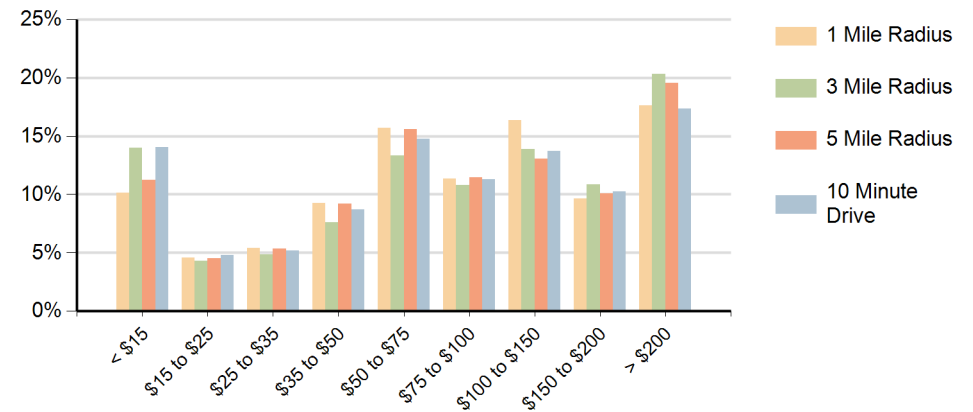
Race (10 Minute Drive)



### Population by Age Range



### Households by Income Range (\$000)



Hancock Austin, Texas		1 Mile Radius	3 Mile Radius	5 Mile Radius	10 Minute Drive
Population	Current Estimated Population	21,473	188,797	384,730	202,125
	2020 Census Population	19,983	176,712	362,975	187,563
	2010 Census Population	16,903	148,782	319,211	160,119
	Historical Annual Growth 2010 to 2020	1.7%	1.7%	1.3%	1.6%
	Estimated Annual Growth 2020 to 2024	1.7%	1.6%	1.4%	1.8%
	Projected Annual Growth 2024 to 2029	0.0%	1.0%	0.8%	1.0%
Households	Current Estimated Households	11,471	87,411	175,028	92,608
	2020 Census Households	10,423	78,837	160,435	82,596
	2010 Census Households	8,805	61,460	131,191	64,700
	Historical Annual Growth 2010 to 2020	1.7%	2.5%	2.0%	2.5%
	Estimated Annual Growth 2020 to 2024	2.3%	2.5%	2.1%	2.7%
	Projected Annual Growth 2024 to 2029	0.6%	1.8%	1.5%	1.9%
Race	Population per Household	1.8	2.0	2.1	2.0
	White	70.2%	60.1%	55.5%	55.5%
	Black or African American	3.3%	7.8%	8.4%	8.1%
	American Indian	0.6%	0.7%	1.0%	0.9%
	Asian	9.7%	9.5%	7.5%	9.0%
	Pacific Islander	0.1%	0.1%	0.1%	0.1%
	2 or More Races	12.5%	13.1%	15.1%	14.6%
	Other Races	3.7%	8.7%	12.5%	11.8%
Hispanic Origin		16.3%	24.8%	31.7%	30.8%