

Keller Town Center
Keller, Texas

1 Mile Radius

3 Mile Radius

5 Mile Radius

10 Minute Drive

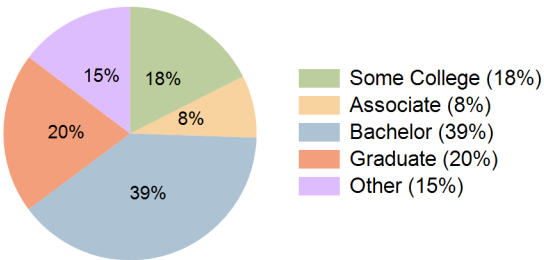
Current Year Demographics

Current Population	9,435	79,631	234,238	69,576
Total Daytime Pop	10,990	71,023	199,680	63,304
Daytime Workers	6,271	34,217	92,307	30,871
Average Household Income	\$147,018	\$198,635	\$172,369	\$198,872
Median Household Income	\$101,306	\$156,440	\$128,339	\$155,673
Total Households	3,918	26,501	79,317	23,498
Median Home Value	\$454,899	\$464,687	\$407,137	\$469,094
Bachelors Degree	41.8%	38.6%	35.7%	39.3%
Graduate Degree	15.3%	20.1%	17.0%	20.5%
Consumer Spending Index	128	171	150	171

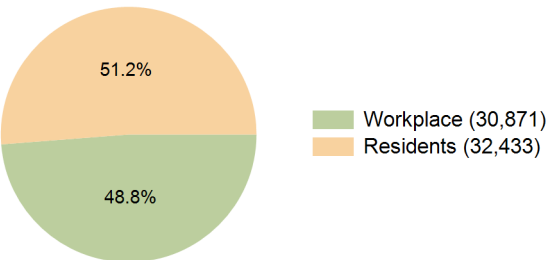
2029 Demographic Projections

Projected Population	9,410	79,864	235,249	69,830
Projected 5 Year Annual Growth Rate (Pop)	-0.1%	0.1%	0.1%	0.1%
Projected Households	3,920	26,751	80,418	23,728
Projected 5 Year Annual Growth Rate (HH)	0.0%	0.2%	0.3%	0.2%

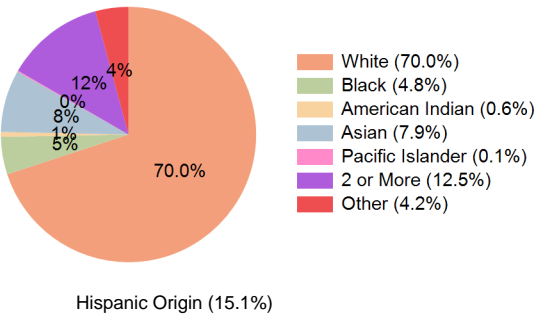
Education (10 Minute Drive)



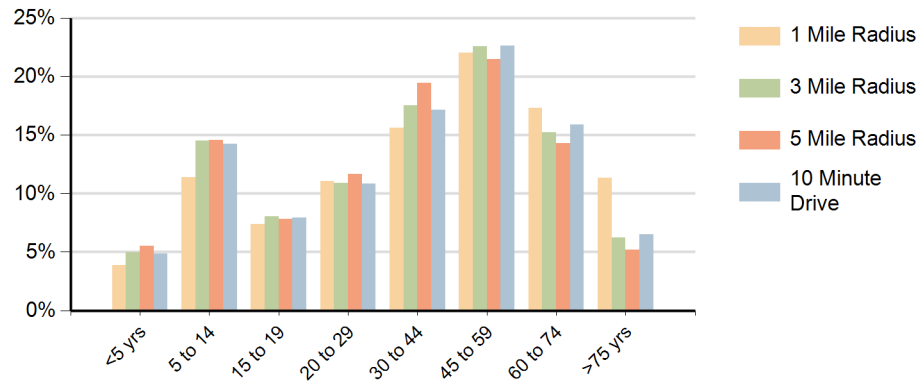
Daytime Population (10 Minute Drive)



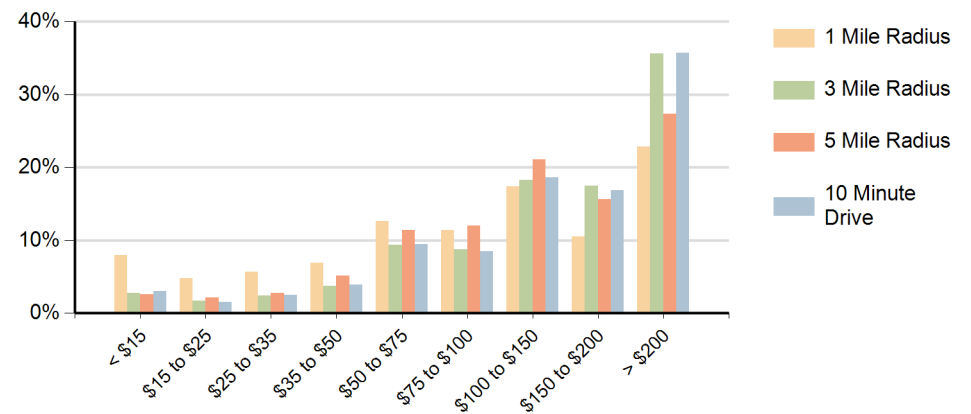
Race (10 Minute Drive)



Population by Age Range



Households by Income Range (\$000)



Keller Town Center Keller, Texas		1 Mile Radius	3 Mile Radius	5 Mile Radius	10 Minute Drive
Population	Current Estimated Population	9,435	79,631	234,238	69,576
	2020 Census Population	9,431	76,117	227,858	66,136
	2010 Census Population	7,882	64,192	191,939	57,936
	Historical Annual Growth 2010 to 2020	1.8%	1.7%	1.7%	1.3%
	Estimated Annual Growth 2020 to 2024	0.0%	1.1%	0.7%	1.2%
	Projected Annual Growth 2024 to 2029	-0.1%	0.1%	0.1%	0.1%
Households	Current Estimated Households	3,918	26,501	79,317	23,498
	2020 Census Households	3,935	25,156	76,591	22,182
	2010 Census Households	3,194	21,309	64,187	19,464
	Historical Annual Growth 2010 to 2020	2.1%	1.7%	1.8%	1.3%
	Estimated Annual Growth 2020 to 2024	-0.1%	1.2%	0.8%	1.4%
	Projected Annual Growth 2024 to 2029	0.0%	0.2%	0.3%	0.2%
Race	Population per Household	2.4	3.0	2.9	2.9
	White	73.7%	69.2%	65.8%	70.0%
	Black or African American	4.1%	5.4%	6.7%	4.8%
	American Indian	0.7%	0.6%	0.7%	0.6%
	Asian	7.2%	8.4%	8.7%	7.9%
	Pacific Islander	0.1%	0.1%	0.2%	0.1%
	2 or More Races	10.9%	12.4%	13.2%	12.5%
	Other Races	3.3%	4.0%	4.8%	4.2%
Hispanic Origin		12.6%	14.9%	17.3%	15.1%