

Sherwood Crossroads
Sherwood, Oregon

1 Mile Radius

3 Mile Radius

5 Mile Radius

10 Minute Drive

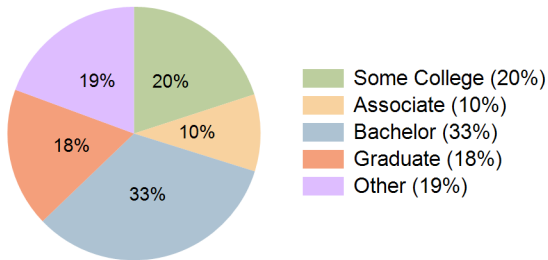
Current Year Demographics

Current Population	8,068	39,346	129,592	49,141
Total Daytime Pop	9,891	40,505	129,298	50,003
Daytime Workers	5,681	21,375	70,059	25,635
Average Household Income	\$147,084	\$162,853	\$153,444	\$152,841
Median Household Income	\$111,096	\$121,424	\$117,118	\$111,548
Total Households	2,932	14,190	49,176	18,607
Median Home Value	\$628,000	\$675,755	\$658,428	\$662,789
Bachelors Degree	36.1%	33.7%	35.5%	33.0%
Graduate Degree	16.2%	17.5%	17.6%	17.8%
Consumer Spending Index	126	138	130	129

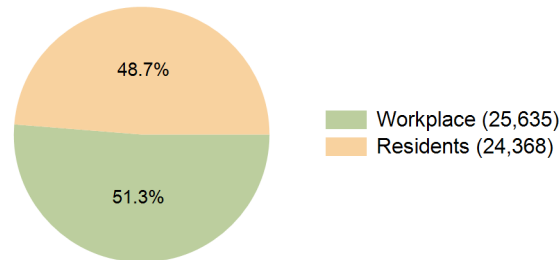
2030 Demographic Projections

Projected Population	8,199	40,237	132,467	50,906
Projected 5 Year Annual Growth Rate (Pop)	0.3%	0.5%	0.4%	0.7%
Projected Households	2,991	14,556	50,371	19,299
Projected 5 Year Annual Growth Rate (HH)	0.4%	0.5%	0.5%	0.7%

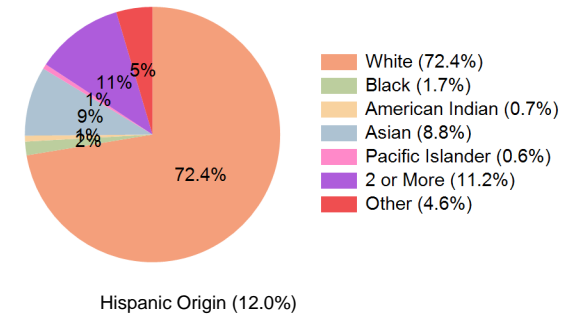
Education (10 Minute Drive)



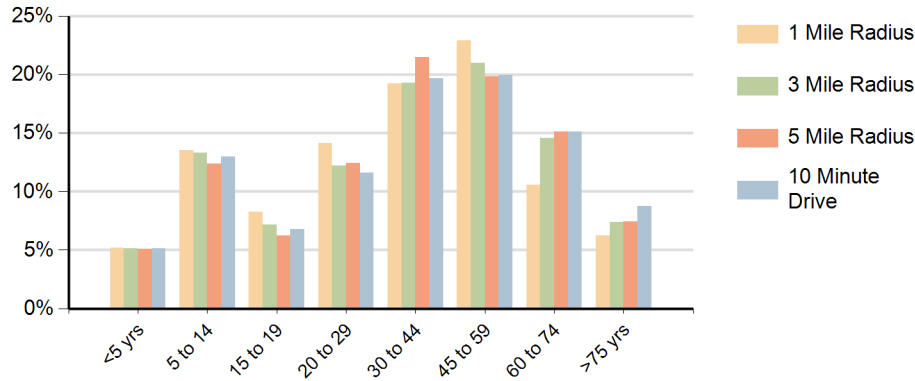
Daytime Population (10 Minute Drive)



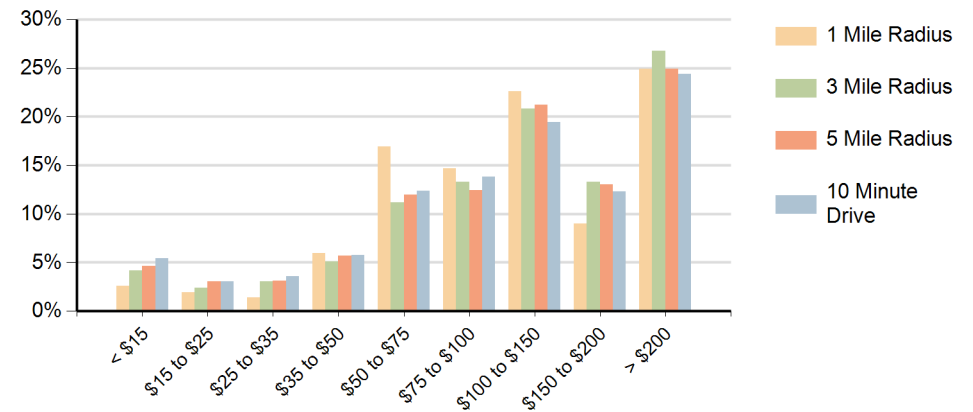
Race (10 Minute Drive)



Population by Age Range



Households by Income Range (\$000)



Sherwood Crossroads Sherwood, Oregon		1 Mile Radius	3 Mile Radius	5 Mile Radius	10 Minute Drive
Population	Current Estimated Population	8,068	39,346	129,592	49,141
	2020 Census Population	8,018	38,039	123,485	46,162
	2010 Census Population	6,792	32,496	106,378	38,468
	Historical Annual Growth 2010 to 2020	1.7%	1.6%	1.5%	1.8%
	Estimated Annual Growth 2020 to 2025	0.1%	0.7%	0.9%	1.2%
	Projected Annual Growth 2025 to 2030	0.3%	0.5%	0.4%	0.7%
Households	Current Estimated Households	2,932	14,190	49,176	18,607
	2020 Census Households	2,888	13,616	46,858	17,414
	2010 Census Households	2,628	12,031	41,097	15,073
	Historical Annual Growth 2010 to 2020	1.0%	1.3%	1.3%	1.5%
	Estimated Annual Growth 2020 to 2025	0.3%	0.8%	0.9%	1.3%
	Projected Annual Growth 2025 to 2030	0.4%	0.5%	0.5%	0.7%
Population per Household		2.7	2.8	2.6	2.6
Race	White	74.0%	74.7%	70.3%	72.4%
	Black or African American	1.0%	1.4%	1.9%	1.7%
	American Indian	1.2%	0.8%	0.8%	0.7%
	Asian	6.1%	6.6%	9.0%	8.8%
	Pacific Islander	0.6%	0.6%	0.8%	0.6%
	2 or More Races	12.3%	11.4%	11.7%	11.2%
	Other Races	4.8%	4.6%	5.6%	4.6%
	Hispanic Origin	13.2%	12.2%	13.4%	12.0%