

Prairie City Crossing
Folsom, California

1 Mile Radius

3 Mile Radius

5 Mile Radius

10 Minute Drive

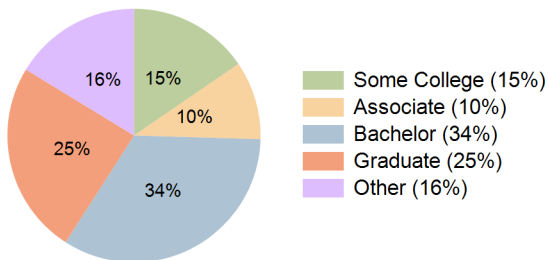
Current Year Demographics

Current Population	12,081	62,118	146,435	61,807
Total Daytime Pop	19,309	81,801	142,646	84,701
Daytime Workers	13,479	51,382	71,251	53,829
Average Household Income	\$195,369	\$166,972	\$180,079	\$185,624
Median Household Income	\$148,256	\$124,141	\$135,515	\$145,779
Total Households	4,280	24,181	53,359	23,573
Median Home Value	\$648,998	\$638,966	\$674,852	\$661,001
Bachelors Degree	33.9%	34.1%	31.5%	33.6%
Graduate Degree	33.9%	22.8%	21.2%	24.6%
Consumer Spending Index	167	144	155	160

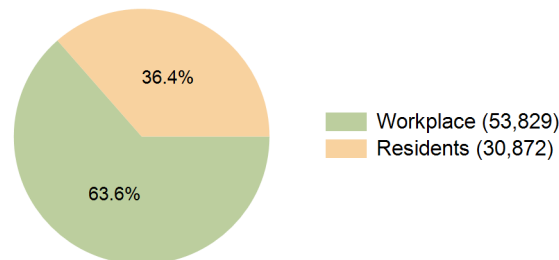
2029 Demographic Projections

Projected Population	12,385	64,939	152,385	66,635
Projected 5 Year Annual Growth Rate (Pop)	0.5%	0.9%	0.8%	1.5%
Projected Households	4,339	25,013	55,107	25,088
Projected 5 Year Annual Growth Rate (HH)	0.3%	0.7%	0.7%	1.3%

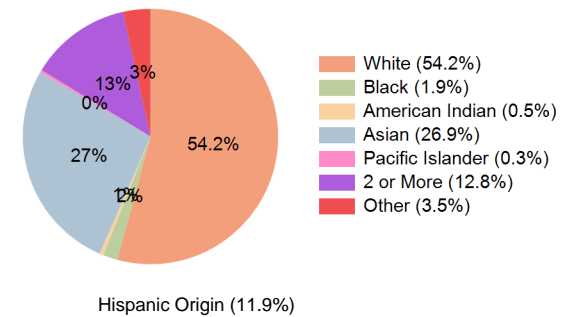
Education (10 Minute Drive)



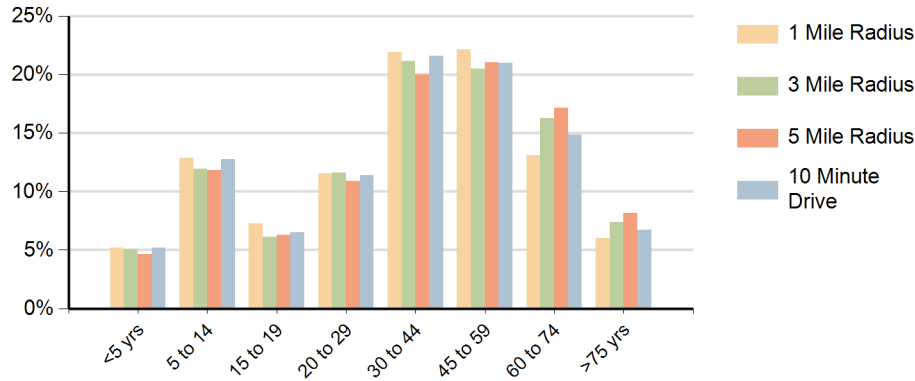
Daytime Population (10 Minute Drive)



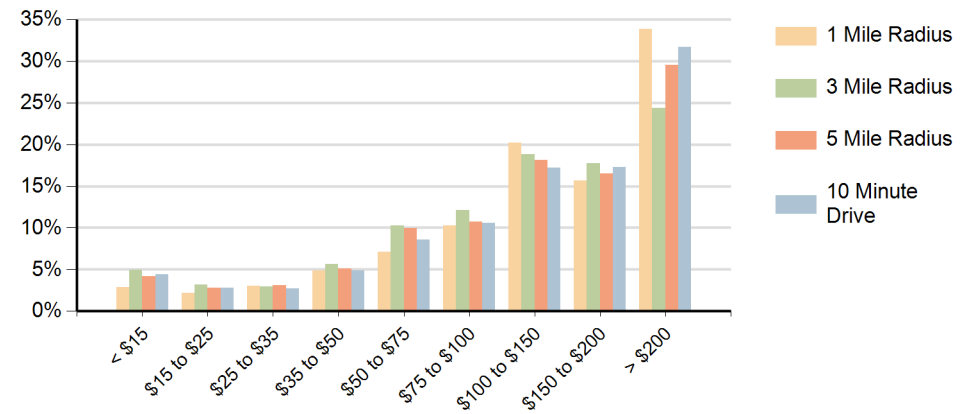
Race (10 Minute Drive)



Population by Age Range



Households by Income Range (\$000)



Prairie City Crossing Folsom, California		1 Mile Radius	3 Mile Radius	5 Mile Radius	10 Minute Drive
Population	Current Estimated Population	12,081	62,118	146,435	61,807
	2020 Census Population	11,223	65,417	136,407	58,462
	2010 Census Population	9,813	61,306	124,325	52,816
	Historical Annual Growth 2010 to 2020	1.4%	0.7%	0.9%	1.0%
	Estimated Annual Growth 2020 to 2024	1.8%	-1.2%	1.7%	1.3%
	Projected Annual Growth 2024 to 2029	0.5%	0.9%	0.8%	1.5%
Households	Current Estimated Households	4,280	24,181	53,359	23,573
	2020 Census Households	4,021	23,559	49,981	20,549
	2010 Census Households	3,380	21,400	44,986	17,950
	Historical Annual Growth 2010 to 2020	1.8%	1.0%	1.1%	1.4%
	Estimated Annual Growth 2020 to 2024	1.5%	0.6%	1.6%	3.3%
	Projected Annual Growth 2024 to 2029	0.3%	0.7%	0.7%	1.3%
Population per Household		2.8	2.6	2.6	2.6
Race	White	52.9%	62.1%	61.5%	54.2%
	Black or African American	1.7%	1.8%	3.0%	1.9%
	American Indian	0.3%	0.6%	0.6%	0.5%
	Asian	30.4%	18.4%	17.8%	26.9%
	Pacific Islander	0.3%	0.3%	0.3%	0.3%
	2 or More Races	11.9%	13.1%	12.2%	12.8%
	Other Races	2.6%	3.8%	4.7%	3.5%
	Hispanic Origin	10.4%	13.0%	13.1%	11.9%